

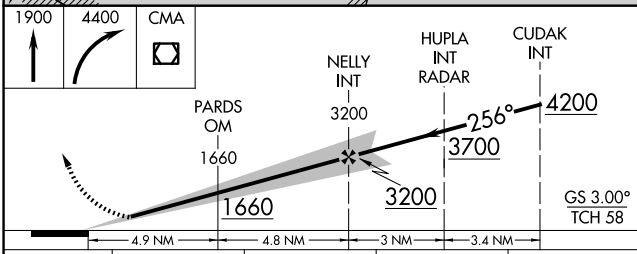
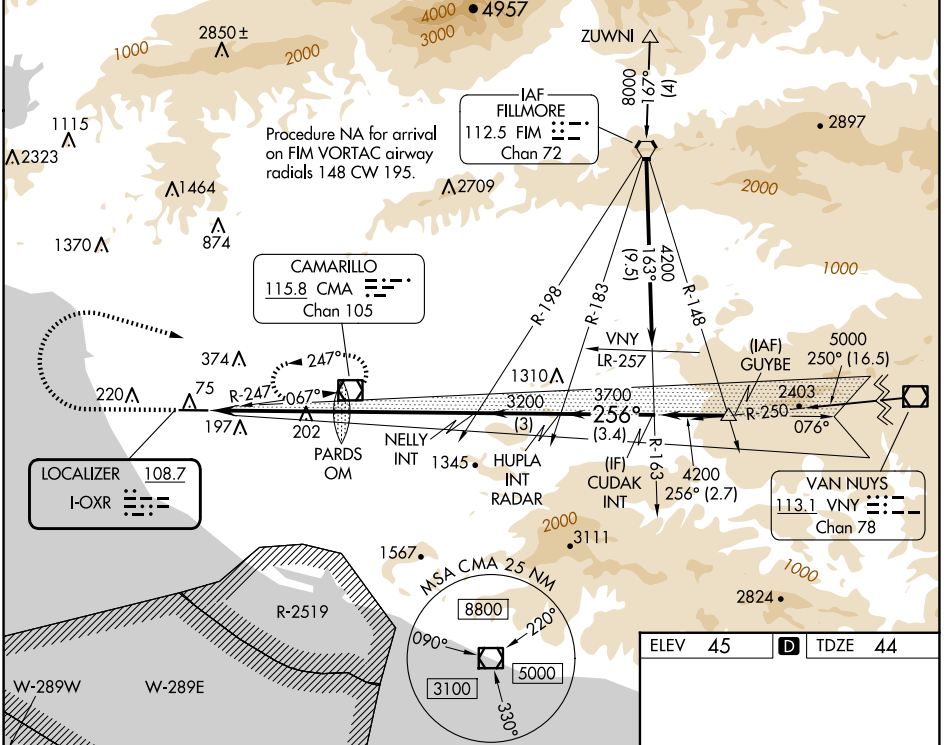
LOC I- <b>OXR</b> <b>108.7</b>	APP CRS <b>256°</b>	Rwy ldg TDZE Apt Elev	<b>5500</b> <b>44</b> <b>45</b>
-----------------------------------	------------------------	-----------------------------	---------------------------------------

# ILS or LOC RWY 25

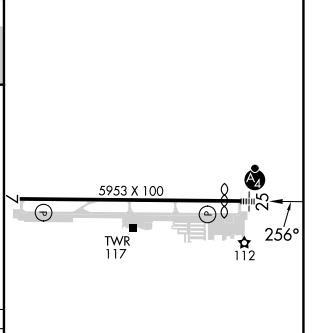
OXNARD (OXR)

<p>Rwy 25 helicopter visibility reduction below 3/4 SM NA. Autopilot coupled approach NA below 1086. Inop table does not apply.</p>	<p>MALS F</p>	<p>MISSED APPROACH: Climb to 1900 then climbing right turn to 4400 direct CMA VOR/DME and hold, continue climb-in-hold to 4400.</p>

ATIS <b>118.05</b>	POINT MUGU APP CON * <b>124.7 335.5</b>	OXNARD TOWER * <b>134.95 (CTAF) 0 257.8</b>	GND CON <b>121.9</b>
-----------------------	--------------------------------------------	------------------------------------------------	-------------------------



ELEV 45	<b>D</b> TDZE 44
---------	------------------



CATEGORY	A	B	C	D
S-ILS 25		424-1	380 (400-1)	
S-LOC 25		460-1	416 (500-1)	
CIRCLING	500-1 455 (600-1)	520-1 475 (500-1)	700-1 3/4 655 (700-1 3/4)	720-2 1/4 675 (700-2 1/4)

REIL Rwy 7	MIRL Rwy 7-25				
FAF to MAP 9.7 NM					
Knots	60	90	120	150	180
Min:Sec	9:42	6:28	4:51	3:53	3:14

SW-3, 15 MAY 2025 to 12 JUN 2025

SW-3, 15 MAY 2025 to 12 JUN 2025