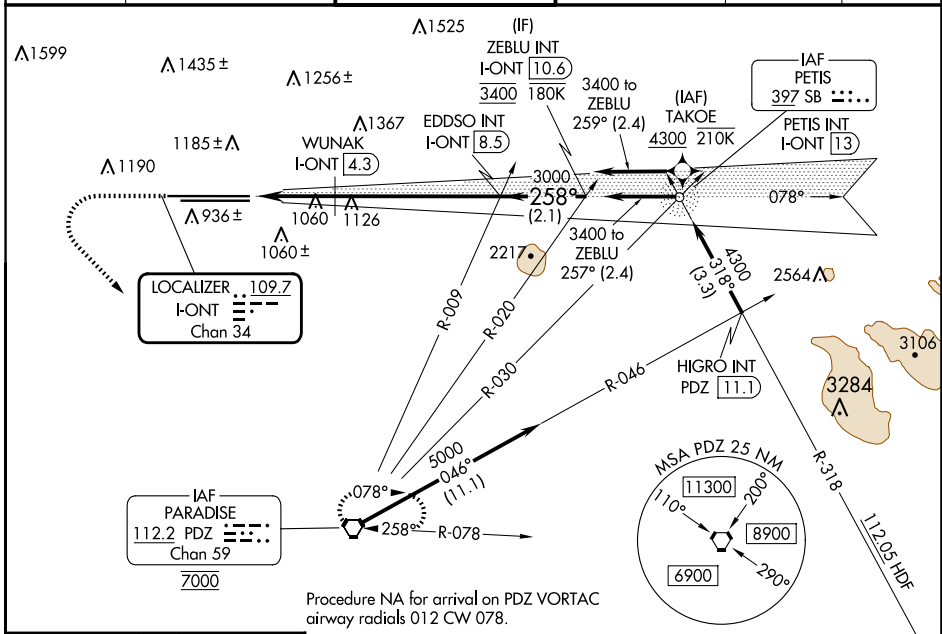


LOC/DME I-ONT <b>109.7</b> Chan <b>34</b>	APP CRS <b>258°</b>	Rwy Idg 26R 26L	TDZE <b>12197</b> <b>932</b>	<b>10200</b> <b>926</b>
RNP APCH - GPS. From TAKOE.		Apt Elev 26R 26L	<b>944</b>	<b>944</b>

# ILS or LOC RWY 26R

ONTARIO INTL (ONT)

RNP APCH - GPS. From TAKOE. Circling NA north of Rwy 8L-26R. For inop ALS, increase S-LOC 26R Cat C and D visibility to 2 SM.		ALSF-2 Rwy 26R 	ALSF-2 Rwy 26L 	MISSED APPROACH: Climb to 2800 then climbing left turn to 5400 direct PDZ VORTAC and hold, continue climb-in-hold to 5400.
D-ATIS <b>124.25</b>	SOCAL APP CON <b>127.0 318.2</b>	ONTARIO TOWER <b>120.6 360.775</b>	GND CON <b>121.9 257.8</b>	CLNC DEL <b>132.9</b>
CPDLC				



Procedure NA for arrival on PDZ VORTAC airway radials 012 CW 078.

ELEV 944	<b>D</b>	TDZE 26R 932 TDZE 26L 926	2800	5400	PDZ	VGSI and ILS glidepath not coincident (VGSI Angle 3.00/TCH 75).	ZEBLU INT I-ONT [10.6]
TDZ/CL Rwys 8L, 26L and 26R HIRL Rwys 8L-26R and 8R-26L		CATEGORY	A	B	C	D	
FAF to MAP 6.3 NM		S-ILS 26R	1132/18 200 (200-½)				
		S-LOC 26R	1680/24 748 (800-½)	1680/40 748 (800-¾)	1680-1¾ 754 (800-1¾)	748 (800-1¾)	
		SIDESTEP 26L	1680/55	754 (800-1)	1680-1¾ 754 (800-1¾)	1680-2	754 (800-2)
		<b>C</b> CIRCLING	1680-1 736 (800-1)	1680-1¼ 736 (800-1¼)	1680-2¼ 736 (800-2¼)	1680-2½	736 (800-2½)
		WUNAK FIX MINIMUMS (DME REQUIRED)					
Knots: 60 90 120 150 180 Min:Sec: 6:18 4:12 3:09 2:31 2:06		S-LOC 26R	1320/24	388 (400-½)	1320/35	388 (400-⅝)	

SW-3, 15 MAY 2025 to 12 JUN 2025

SW-3, 15 MAY 2025 to 12 JUN 2025