

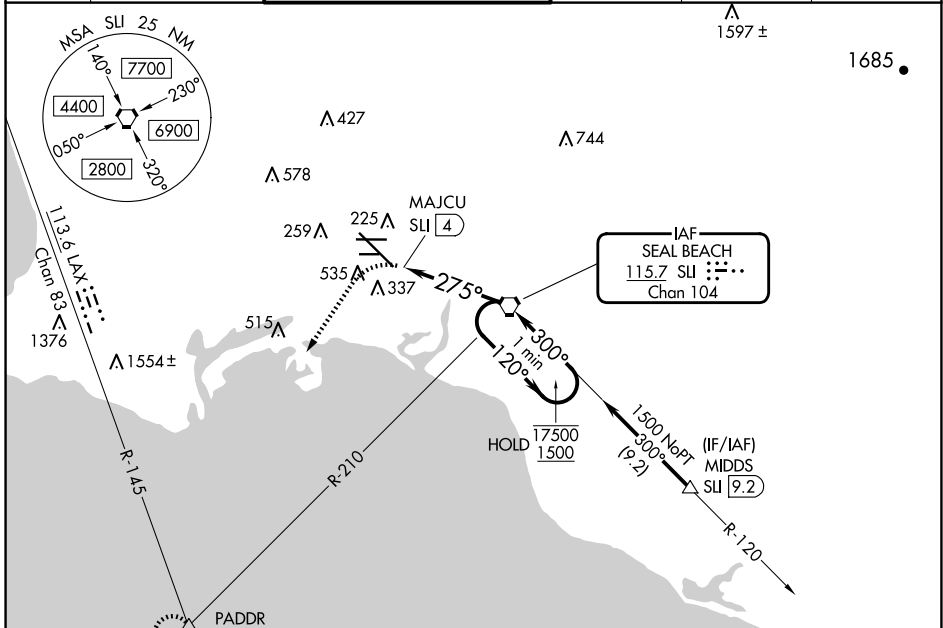
VORTAC SU <b>115.7</b> Chan <b>104</b>	APP CRS <b>275°</b>	Rwy ldg TDZE <b>38</b> Apt Elev <b>60</b>	<b>7414</b>
--	------------------------	---	-------------

# VOR or TACAN RWY 30

LONG BEACH (DAUGHERTY FLD) (LGB)

<p><b>▼</b> Rwy 30 helicopter visibility reduction below RVR 4000 NA. <b>▲</b> Inop table does not apply.</p>	<p>MALSR</p>	<p>MISSED APPROACH: Climbing left turn to 3000 on heading 200° and LAX VORTAC R-145 to PADDR INT/LAX 21.8 DME and hold.</p>
---	--------------	---

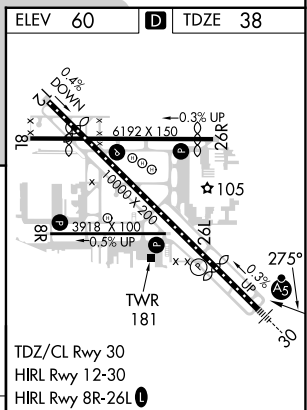
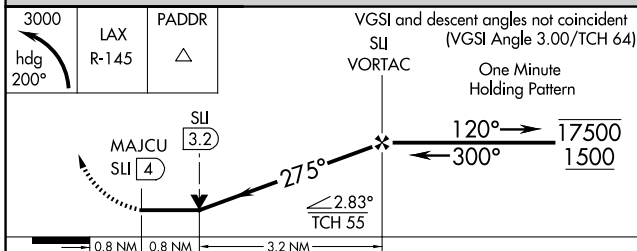
ATIS <b>127.75</b>	SOCAL APP CON <b>125.35 316.125</b>	LONG BEACH TOWER* <b>120.5 257.6</b> (Rwy 12) <b>119.4</b> (CTAF) <b>257.6</b> (Rwy 30)	GND CON <b>133.0 257.6</b>	CLNC DEL <b>118.15</b>	UNICOM <b>122.95</b>
-----------------------	--	---	-------------------------------	---------------------------	-------------------------



SW-3, 15 MAY 2025 to 12 JUN 2025

SW-3, 15 MAY 2025 to 12 JUN 2025

ELEV 60	D TDZE 38
---------	-----------



CATEGORY	A	B	C	D		
S-30	600/55 562 (600-1)		600-1 5/8 562 (600-1 1/8)			
CIRCLING	840-1 780 (800-1)		840-2 1/4 780 (800-2 1/4)	840-2 1/2 780 (800-2 1/2)		
	FAF to MAP 4 NM					
	Knots	60	90	120	150	180
	Min:Sec	4:00	2:40	2:00	1:36	1:20