

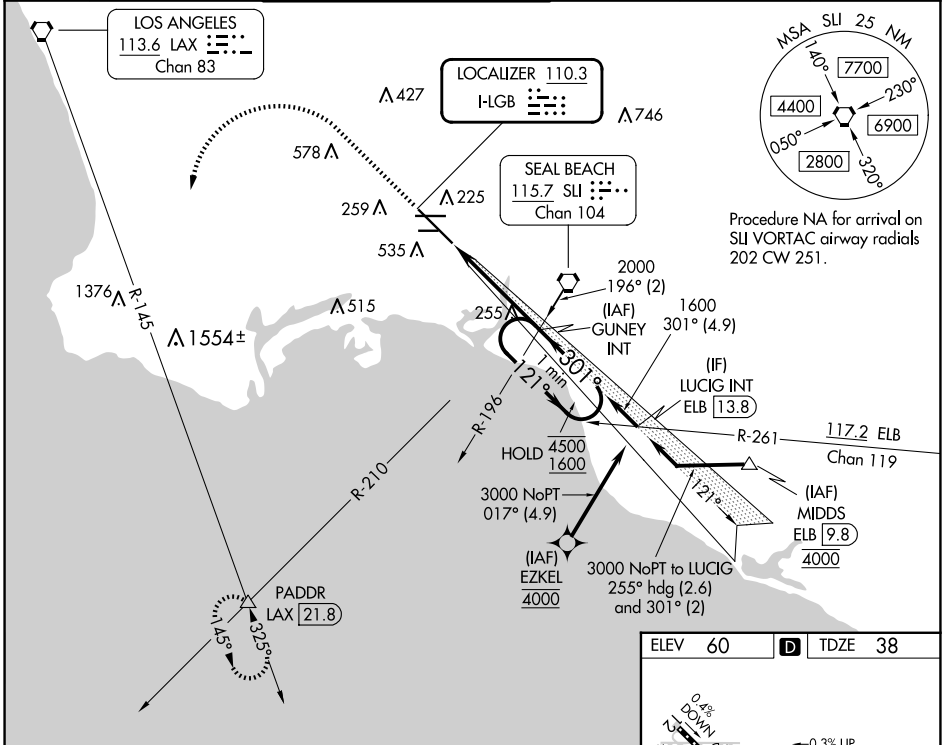
LOC I-LGB	APP CRS	Rwy Idg	7414
110.3	301°	TDZE	38
		Apt Elev	60

ILS or LOC RWY 30

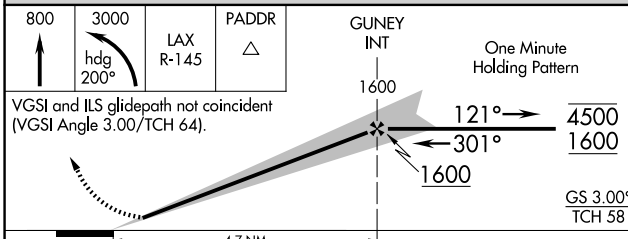
LONG BEACH (DAUGHERTY FLD) (LGB)

From EZKEL: RNAV 1-GPS required.	MALSR	MISSED APPROACH: Climb to 800 then climbing left turn to 3000 on heading 200° and LAX VORTAC R-145 to PADDR INT/LAX 21.8 DME and hold.
For inop ALS, increase S-LOC 30 Cats C/D visibility to 1 3/8 SM.		

ATIS 127.75	SOCAL APP CON 125.35 316.125	LONG BEACH TOWER ★ 120.5 257.6 (Rwy 12) 119.4 (CTAF) 257.6 (Rwy 30)	GND CON 133.0 257.6	CLNC DEL 118.15	UNICOM 122.95
-----------------------	--	--	-------------------------------	---------------------------	-------------------------



Procedure NA for arrival on SLI VORTAC airway radials 202 CW 251.



ELEV 60	D	TDZE 38
TDZ/CL Rwy 30 HIRL Rwy 12-30 HIRL Rwy 8R-26L MIRL Rwy 8L-26R REIL Rws 8R, 12, 26L, and 26R FAF to MAP 4.7 NM		
Knots	60	90 120 150 180
Min:Sec	4:42	3:08 2:21 1:53 1:34

SW-3, 15 MAY 2025 to 12 JUN 2025

SW-3, 15 MAY 2025 to 12 JUN 2025