

VORTAC DAG	APP CRS	Rwy Idg	5123
113.2	224°	TDZE	1918
Chan 79		Apt Elev	1930

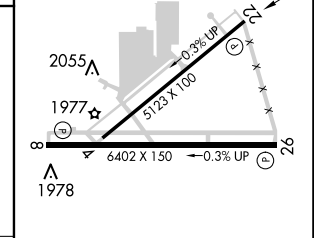
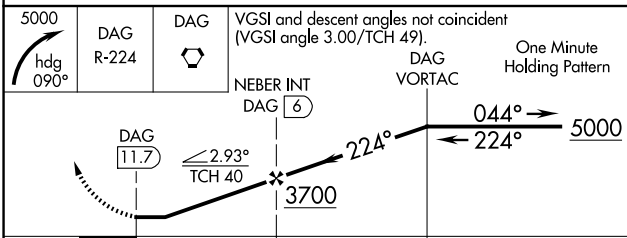
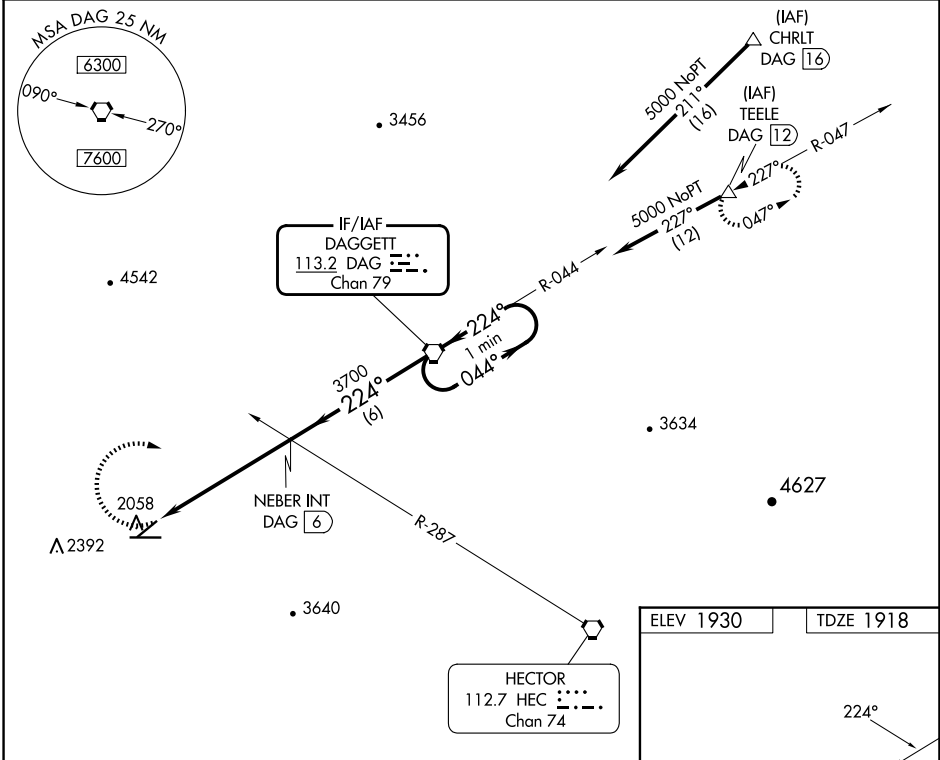
VOR or TACAN RWY 22

BARSTOW-DAGGETT (DAG)

⚠ Circling NA for Cat D south of Rwy 8-26.

MISSED APPROACH: Climbing right turn to 5000 via heading 090° and via DAG VORTAC R-224 to DAG VORTAC and hold (TACAN aircraft climb to 6000 via DAG VORTAC R-047 to TEELE/DAG 12 DME and hold NE, LT 227° inbound).

ASOS 132.175	LOS ANGELES CENTER 132.5 284.7	UNICOM 123.0 (CTAF) ①
------------------------	--	---------------------------------



CATEGORY	A	B	C	D
S-22	3160-1¼ 1242 (1300-1¼)	3440-1½ 1522 (1600-1½)	3440-3 1522 (1600-3)	3540-3 1622 (1700-3)
C CIRCLING	3160-1¼ 1230 (1300-1¼)	3440-1½ 1510 (1600-1½)	3500-3 1570 (1600-3)	3540-3 1610 (1700-3)

MIRL Rwy 4-22 and 8-26 ①

FAF to MAP 5.6 NM

Knots	60	90	120	150	180
Min:Sec	5:36	3:44	2:48	2:14	1:52

SW-3, 15 MAY 2025 to 12 JUN 2025

SW-3, 15 MAY 2025 to 12 JUN 2025