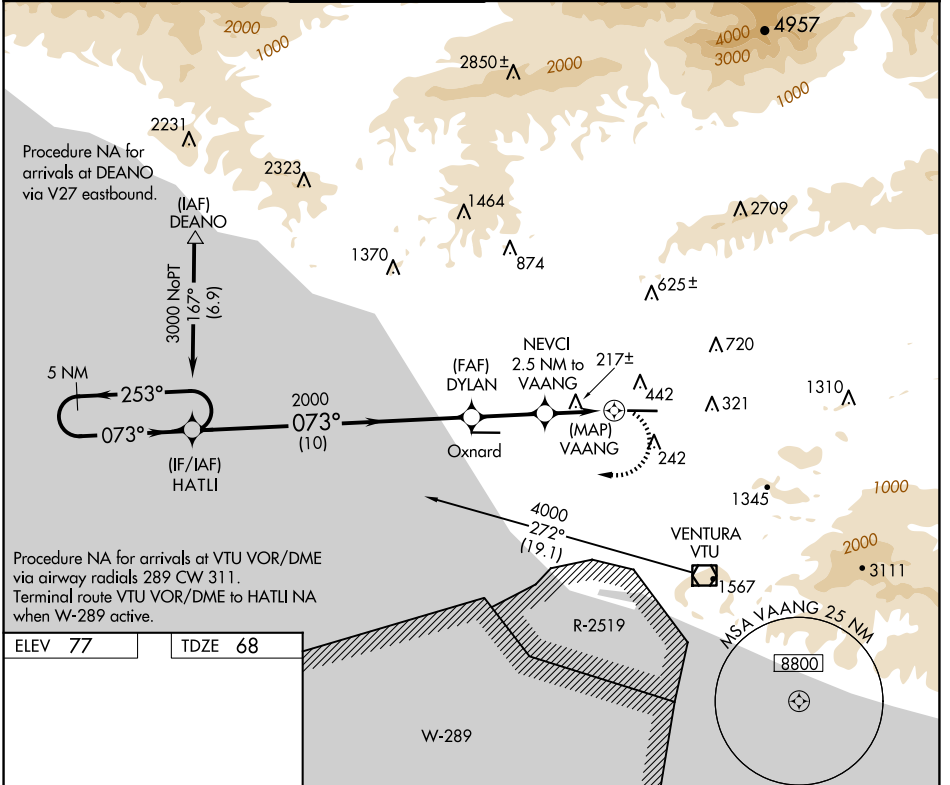


APP CRS	Rwy Idg	6013
073°	TDZE	68
	Apt Elev	77

RNAV (GPS) RWY 8

CAMARILLO (CMA)

<p>⚠ Circling NA north of Rwy 8-26. DME/DME RNP-0.3 NA. When local altimeter setting not received, use Oxnard altimeter setting and increase all MDA 20 feet.</p>		<p>MISSED APPROACH: Climbing right turn to 3000 direct HATLI and hold.</p>				
ATIS	POINT MUGU APP CON *	CAMARILLO TOWER *	GND CON	CLNC DEL	POINT MUGU CLNC DEL	UNICOM
126.025	124.7 335.5	128.2 (CTAF) 0 269.4	121.8	121.8	120.75 279.55	122.95



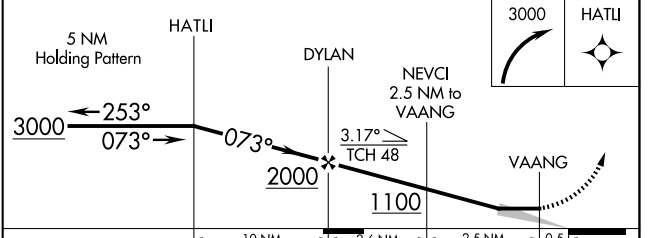
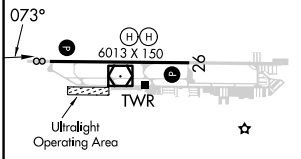
Procedure NA for arrivals at DEANO via V27 eastbound.

(IAF) DEANO
3000 NoPT
1.67° (6.9)

5 NM
253°
073°
2000 (10)
073°
(IF/IAF) HATLI

Procedure NA for arrivals at VTU VOR/DME via airway radials 289 CW 311. Terminal route VTU VOR/DME to HATLI NA when W-289 active.

ELEV 77	TDZE 68
---------	---------



CATEGORY	A	B	C	D
LNAV MDA	840-1 772 (800-1)	840-1¼ 772 (800-1¼)	840-2½ 772 (800-2½)	772 (800-2½)
CIRCLING	840-1 763 (800-1)	840-1¼ 763 (800-1¼)	840-2½ 763 (800-2½)	1100-3 1023 (1100-3)

SW-3, 15 MAY 2025 to 12 JUN 2025

SW-3, 15 MAY 2025 to 12 JUN 2025