

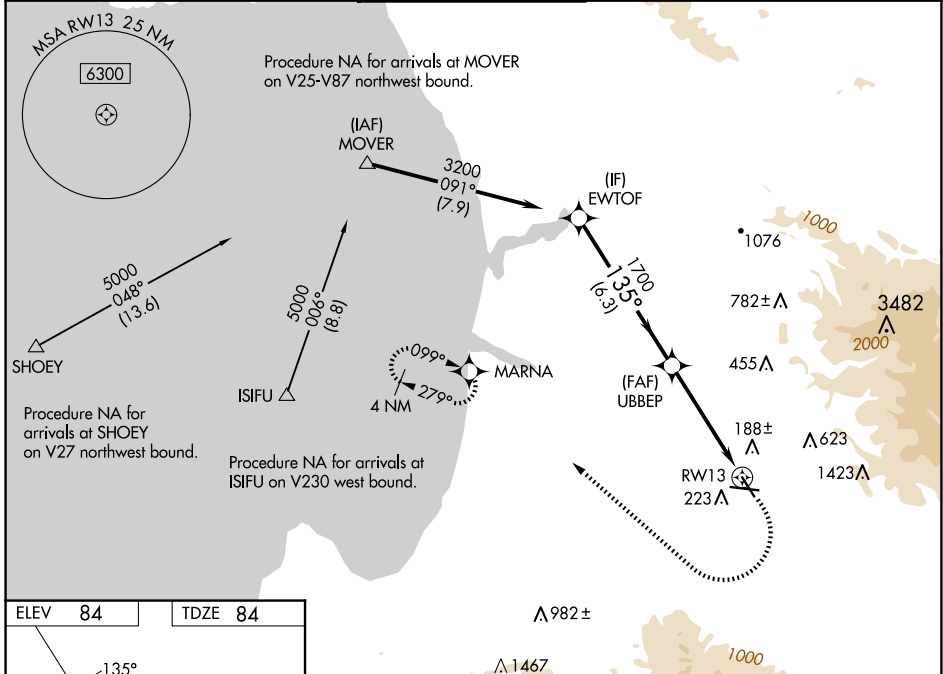
WAAS CH 57944 W13A	APP CRS 135°	Rwy Idg 4825 TDZE 84 Apt Elev 84
--	------------------------	---

RNAV (GPS) RWY 13

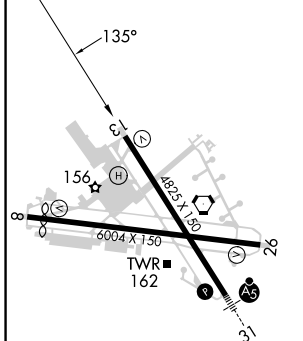
SALINAS MUNI (SNS)

RNP APCH - GPS.	MISSED APPROACH: (Do not exceed 185K until MARNNA). Climb to 600, then climbing right turn to 3000 direct MARNNA and hold, continue climb-in-hold to 3000.
<p>▼ Rwy 13 helicopter visibility reduction below $\frac{3}{4}$ SM NA. For uncompensated Baro-VNAV systems, LNAV/VNAV NA below 1°C or above 54°C. Circling NA for Cat C northeast of Rwy 13 and north of Rwy 26. Circling NA for Cat D northeast of Rwy 13-31.</p>	

ATIS 124.85	NORCAL APP CON 133.0 251.15	SALINAS TOWER * 119.525 (CTAF) 0 239.3	GND CON 121.7	UNICOM 123.0
-----------------------	---------------------------------------	--	-------------------------	------------------------



ELEV 84	TDZE 84
---------	---------



- HIRL Rwy 13-31
- MIRL Rwy 8-26
- REIL Rwy 13 and 26

EWTOF 3200 GP 3.12° TCH 50	UBBEP 1700	1700	1.4 NM to RWY 13	RWY 13	600	3000	MARNNA
					6.3 NM	3.3 NM	1.4 NM
CATEGORY	A	B	C	D			
LPV DA	334- $\frac{3}{4}$ 250 (300- $\frac{3}{4}$)						
LNAV/VNAV DA	447-1	363 (400-1)	463-1 379 (400-1)	488-1 $\frac{1}{8}$ 404 (500-1 $\frac{1}{8}$)			
LNAV MDA	580-1	496 (500-1)	580-1 $\frac{3}{8}$	496 (500-1 $\frac{3}{8}$)			
C CIRCLING	580-1	496 (500-1)	800-2 716 (800-2)	1620-3 1536 (1600-3)			

SW-2, 15 MAY 2025 to 12 JUN 2025

SW-2, 15 MAY 2025 to 12 JUN 2025