

WAAS CH 69501 W12B	APP CRS 126°	Rwy Idg TDZE Apt Elev	8831 44 62
--	------------------------	-----------------------------	---------------------------------------

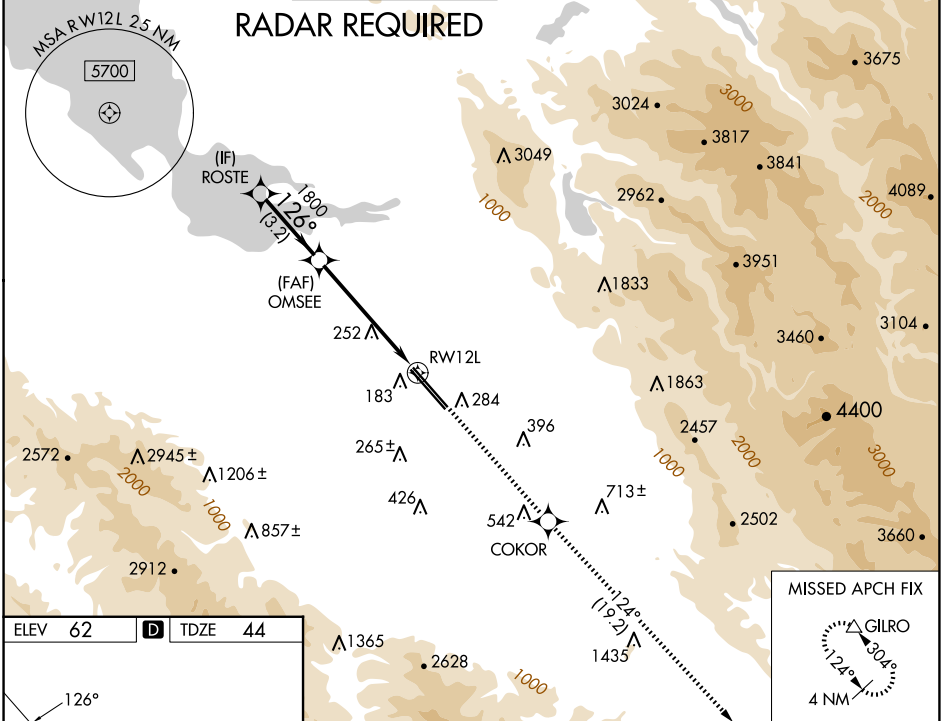
RNAV (GPS) Y RWY 12L

NORMAN Y MINETA SAN JOSE INTL (SJC)

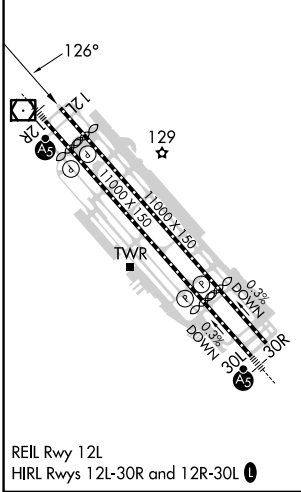
▽ For uncompensated Baro-VNAV systems, LNAV/VNAV NA below -1°C (31°F) or above 54°C (130°F). DME/DME RNP-0.3 NA.

MISSED APPROACH: Climb to 4600 direct COKOR and on track 124° to GILRO and hold.

D-ATIS 126.95	NORCAL APP CON 120.1 290.25	SAN JOSE TOWER ★ 124.0 (CTAF) 0 257.6	GND CON 121.7	CLNC DEL 118.0	CPDLC	UNICOM 122.95
-------------------------	---------------------------------------	---	-------------------------	--------------------------	-------	-------------------------



ELEV 62	D	TDZE 44
---------	----------	---------



VGSI and RNAV glidepath not coincident (VGSI Angle 3.00/TCH 70).

ROSTE	OMSEE	COKOR	GILRO
2300	1800	4600	3040
1800		↑	△
126°		Ir 124°	
*LNAV only			
*1.3 NM to RWY 12L			
GP 3.00°	TCH 57		
	3.2 NM	4.1 NM	1.3 NM
CATEGORY	A	B	C
LPV	DA 294-3/4	250 (300-3/4)	
LNAV/VNAV	DA 341-1	297 (300-1)	
LNAV MDA	520-1 476 (500-1)	520-13/8 476 (500-13/8)	

SW-2, 15 MAY 2025 to 12 JUN 2025

SW-2, 15 MAY 2025 to 12 JUN 2025