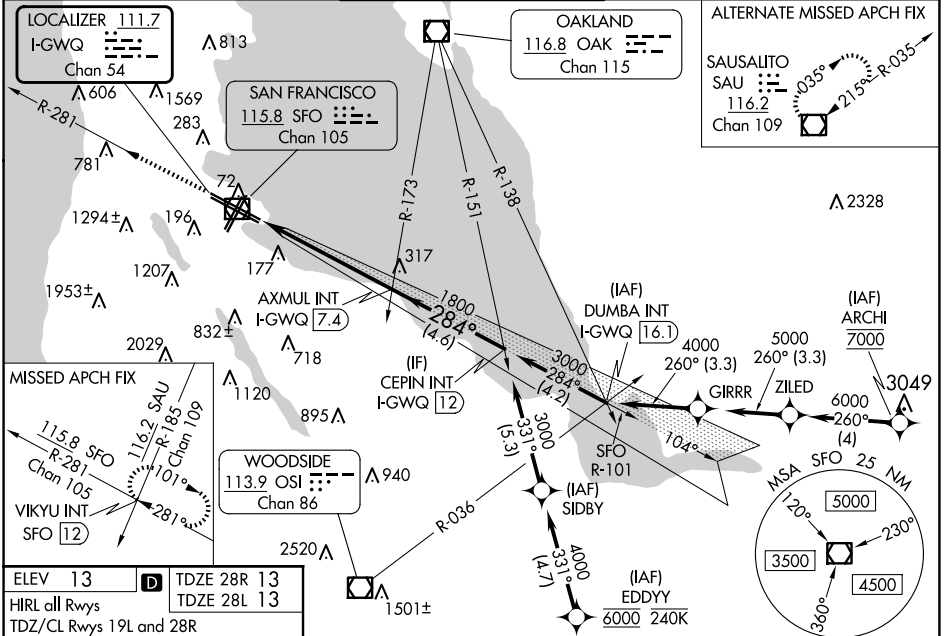


LOC/DME I-GWQ 111.7 Chan 54	APP CRS 284°	Rwy Idg 28R 28L	11236 10275
		TDZE 13 13	
		Apt Elev 13 13	

ILS or LOC RWY 28R

SAN FRANCISCO INTL (SFO)

RNAV 1-GPS or RADAR required for procedure entry.		ALSIF-2 Rwy 28R	MALSR Rwy 28L	MISSED APPROACH: Climb to 3000 on SFO VOR/DME R-281 to VIKYU INT/SFO 12 DME and hold. *Missed approach requires minimum climb of 350 feet per NM to 1900; if unable to meet climb gradient, see ILS or LOC RWY 28L.		
<p>⚠ Circling NA to Rwy 10L, 10R, 19L, and 19R. Circling Rwy 1L, 1R NA at night. LOC procedure NA during simultaneous operations. For inop ALS increase S-LOC 28R* Cat C/D visibility to 1 3/8 SM. Simultaneous approach authorized. Simultaneous operations require use of vertical guidance; maintain last assigned altitude until established on glideslope.</p>						
D-ATIS 113.7 115.8 118.85	NORCAL APP CON 134.5 338.2	SAN FRANCISCO TOWER 120.5 269.1		GND CON 121.8	CLNC DEL 118.2	CPDLC



ELEV 13	TDZE 28R 13
HIRL all Rwys	TDZE 28L 13
TDZ/CL Rwy 19L and 28R	
REIL Rwy 1L, 1R and 10L	

FAF to MAP 5.4 NM					
Knots	60	90	120	150	180
Min:Sec	5:24	3:36	2:42	2:10	1:48

	VIKYU INT SFO R-281	Use I-GWQ DME when on the localizer course. VGSI and ILS glidepath not coincident (VGSI Angle 3.00/TCH 68).	CEPIN INT I-GWQ 12	
	I-GWQ 2	I-GWQ 3.2	I-GWQ 7.4	
CATEGORY	A	B	C	D
S-ILS 28R*	213/18 200 (200-1/2)			
S-LOC 28R*	480/24	467 (500-1/2)	480/50	467 (500-1)
SIDESTEP* 28L	480/55 467 (500-1)			480-1 1/2 467 (500-1 1/2)
ⓐ CIRCLING	740-1 727 (800-1)	960-1 1/4 947 (1000-1 1/4)	1560-3 1547 (1600-3)	NA

SW-2, 15 MAY 2025 to 12 JUN 2025

SW-2, 15 MAY 2025 to 12 JUN 2025