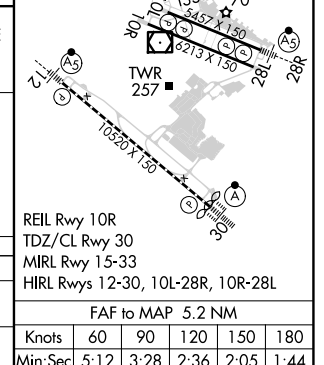
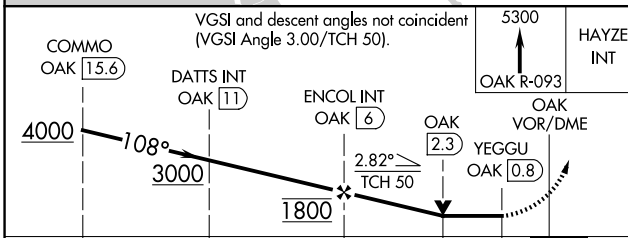
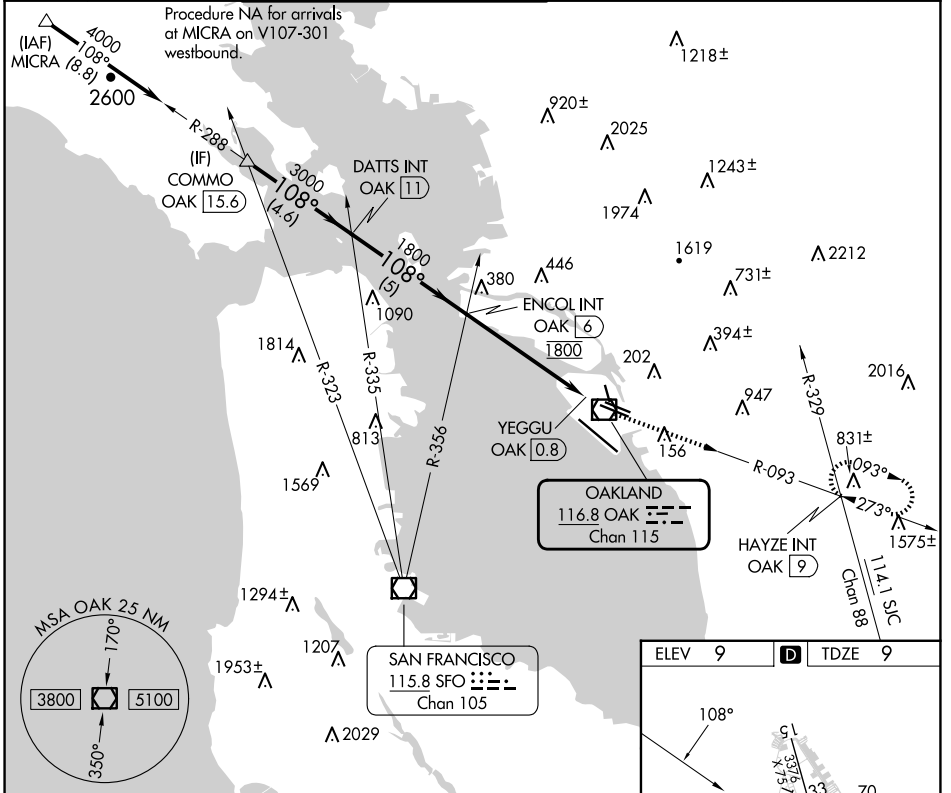


VOR/DME OAK <b>116.8</b> Chan <b>115</b>	APP CRS <b>108°</b>	Rwy Idg <b>6213</b> TDZE <b>9</b> Apt Elev <b>9</b>
--	------------------------	---

# VOR RWY 10R

## SAN FRANCISCO BAY OAKLAND INTL (OAK)

<b>▼</b> <b>▲</b> Helicopter visibility reduction below 3/4 SM NA.	MISSED APPROACH: Climb to 5300 on OAK VOR/DME R-093 to HAYZE INT/OAK 9 DME and hold, continue climb-in-hold to 5300.				
D-ATIS <b>133.775</b>	NORCAL APP CON <b>125.35 263.15</b>	OAKLAND TOWER <b>118.3 291.65</b> (Rwys 10L/R-28L/R, 15-33) <b>127.2 256.9</b> (Rwy 12-30)	GND CON <b>121.9</b> (Rwys 10L/R-28L/R, 15-33) <b>121.75</b> (Rwy 12-30)	CLNC DEL <b>121.1</b>	CPDLC



CATEGORY	A	B	C	D
S-10R	740-1 731 (800-1)		740-2 731 (800-2)	
CIRCLING	740-1 731 (800-1)		740-2 731 (800-2)	1380-3 1371 (1400-3)

SW-2, 15 MAY 2025 to 12 JUN 2025

SW-2, 15 MAY 2025 to 12 JUN 2025