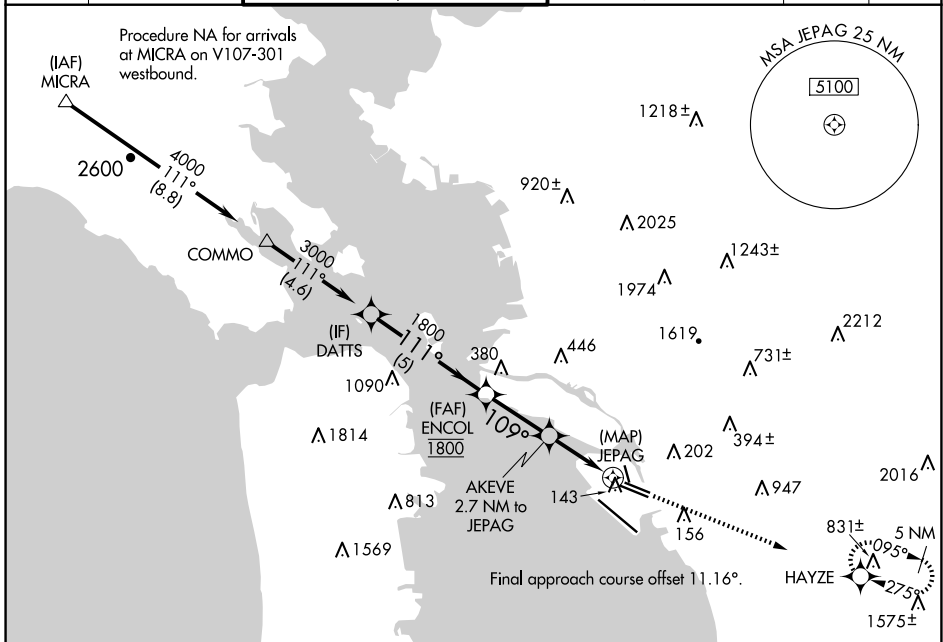


| | | |
|-------------|----------|-------------|
| APP CRS | Rwy Idg | 5336 |
| 109° | TDZE | 6 |
| | Apt Elev | 9 |

RNAV (GPS) RWY 10L

SAN FRANCISCO BAY OAKLAND INTL (OAK)

| | | | | | | |
|--|--|---|--|--|-----------------------------------|--------------|
| <p>▽ DME/DME RNP-0.3 NA. ▲ Helicopter visibility reduction below 3/4 SM not authorized.</p> | <p>OAKLAND TOWER (Rwys 10L/R-28L/R, 15-33) 118.3 291.65 127.2 256.9 (Rwy 12-30)</p> | | <p>GND CON (Rwys 10L/R-28L/R, 15-33) 121.9 121.75 (Rwy 12-30)</p> | | <p>CLNC DEL 121.1</p> | <p>CPDLC</p> |
| | <p>D-ATIS 133.775</p> | <p>NORCAL APP CON 125.35 263.15</p> | | | | |



SW-2, 15 MAY 2025 to 12 JUN 2025

SW-2, 15 MAY 2025 to 12 JUN 2025

| | | | |
|--|-------|--|--|
| ELEV 9 | | TDZE 6 | |
| | | | |
| <p>DATTTS VGSI and descent angles not coincident (VGSI Angle 3.00/TCH 50).</p> | | | |
| <p>3000 111° 1800</p> | | <p>5200 HAYZE</p> | |
| <p>ENCLOSURE 2.79° TCH 49</p> | | <p>AKEVE 2.7 NM to JEPAG 0.9 NM to JEPAG</p> | |
| <p>1000 109°</p> | | <p>JEPAG</p> | |
| 5 NM | | 2.7 NM 1.8 NM 0.9 0.5 | |
| CATEGORY | A | B | C D |
| RNAV MDA | 500-1 | 494 (500-1) | 500-1 3/8 494 (500-1 3/8) |
| CIRCLING | 560-1 | 551 (600-1) | 660-1 3/4 651 (700-1 3/4) 1380-3 1371 (1400-3) |
| <p>REIL Rwy 10R TDZ/CL Rwy 30 MIRL Rwy 15-33 HIRL Rws 12-30, 10L-28R, 10R-28L</p> | | | |