

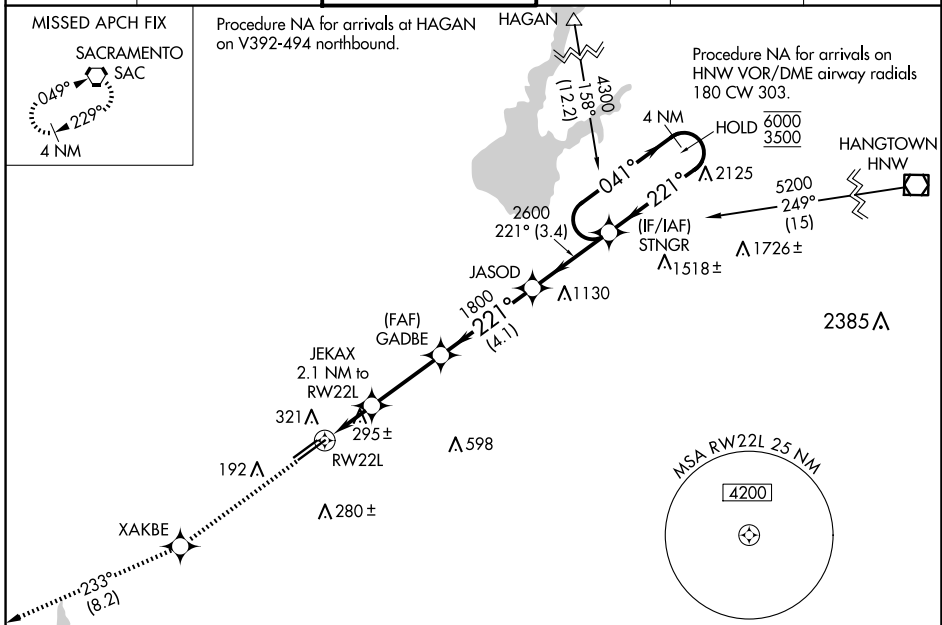
WAAS CH 40225 W22A	APP CRS 221°	Rwy Idg 11301 TDZE 98 Apt Elev 98
--	------------------------	--

RNAV (GPS) RWY 22L

SACRAMENTO MATHER (MHR)

RNP APCH.	MALS R	MISSED APPROACH: Climb to 3000 direct XAKBE and on track 233° to SAC VORTAC and hold.
<p>⚠ Circling NA northwest of Rwy 4R-22L. For uncompensated Baro-VNAV systems, LNAV/VNAV NA below -15°C or above 54°C. For inop ALS, increase LNAV/VNAV all Cats visibility to 1½ SM and LNAV Cat C/D visibility to 1¾ SM.</p>		

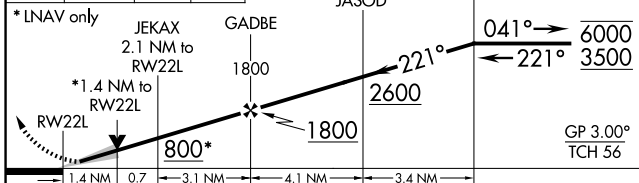
ATIS 118.325	NORCAL APP CON 127.4 317.5	MATHER TOWER ★ 120.65 (CTAF) 282.25	GND CON 121.85 307.9	CLNC DEL 121.85 307.9	UNICOM 122.95
------------------------	--------------------------------------	---	--------------------------------	---------------------------------	-------------------------



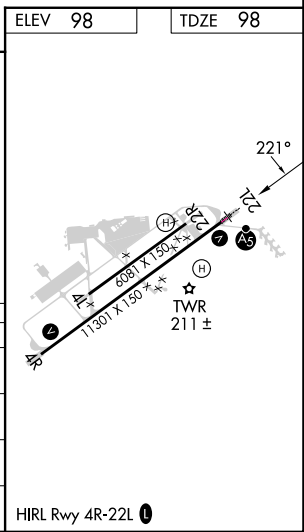
ELEV 98	TDZE 98
----------------	----------------

3000 XAKBE SAC
↑ tr 233°

VGSI and RNAV glidepath not coincident (VGSI Angle 3.00/TCH 50).



CATEGORY	A	B	C	D
LPV DA	298-½		200 (200-½)	
LNAV/VNAV DA	517-¾		419 (500-¾)	
LNAV MDA	580-½ 482 (500-½)		580-1 482 (500-1)	
CIRCLING	580-1 482 (500-1)		600-1½ 800-2¼ 502 (600-1½) 702 (800-2¼)	



SW-2, 15 MAY 2025 to 12 JUN 2025

SW-2, 15 MAY 2025 to 12 JUN 2025