

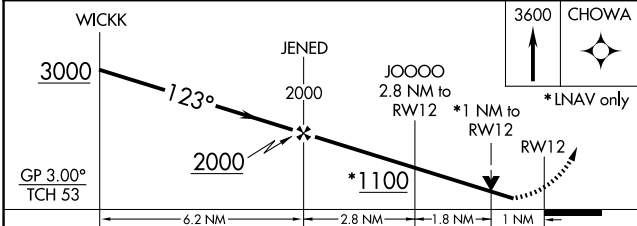
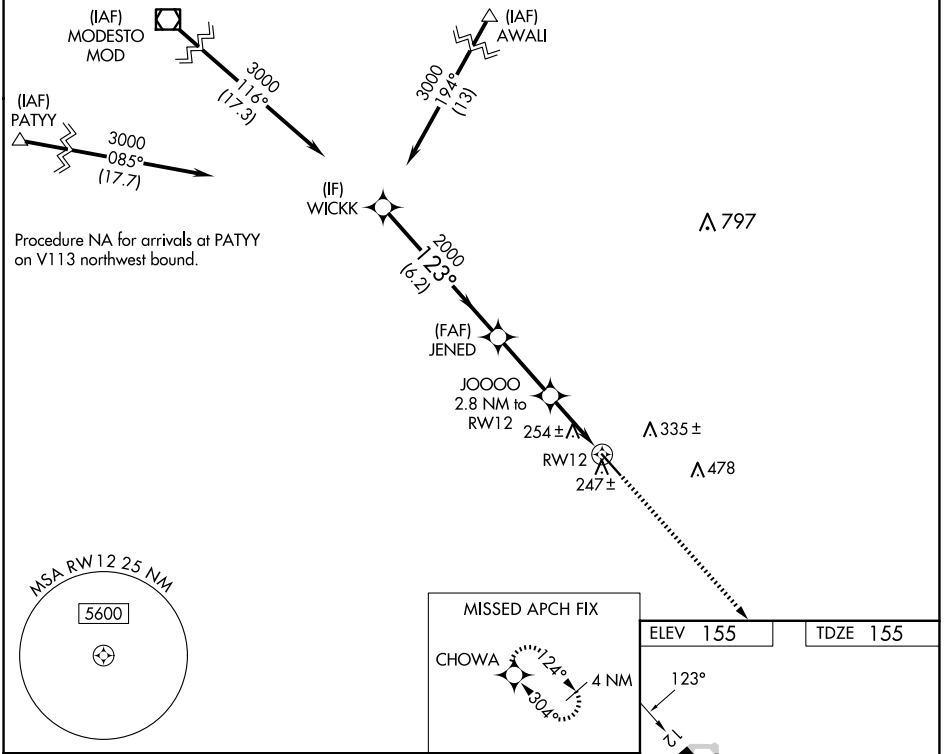
WAAS CH <b>93923</b> <b>W12A</b>	APP CRS <b>123°</b>	Rwy Idg <b>5914</b> TDZE <b>155</b> Apt Elev <b>155</b>
--	------------------------	---

# RNAV (GPS) RWY 12

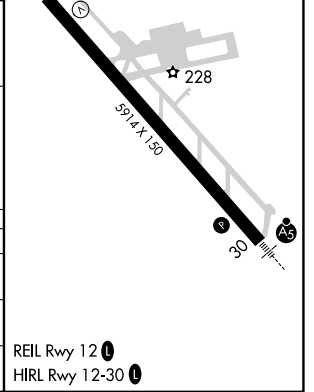
MERCED YOSEMITE RGNL (MCE)

RNP APCH. ▼ Rwy 12 helicopter visibility reduction below 3/4 SM NA. For uncompensated Baro-VNAV systems, LNAV/VNAV NA below -3°C or above 54°C.	MISSED APPROACH: Climb to 3600 direct CHOWA and hold.
--	---

ASOS <b>132.175</b>	NORCAL APP CON <b>120.95 269.45</b>	UNICOM <b>122.7 (CTAF) 0</b>
------------------------	--	---------------------------------



CATEGORY	A	B	C	D
LPV DA		405-3/4	250 (300-3/4)	
LNAV/VNAV DA		434-7/8	279 (300-7/8)	
LNAV MDA		520-1	365 (400-1)	



SW-2, 15 MAY 2025 to 12 JUN 2025

SW-2, 15 MAY 2025 to 12 JUN 2025