

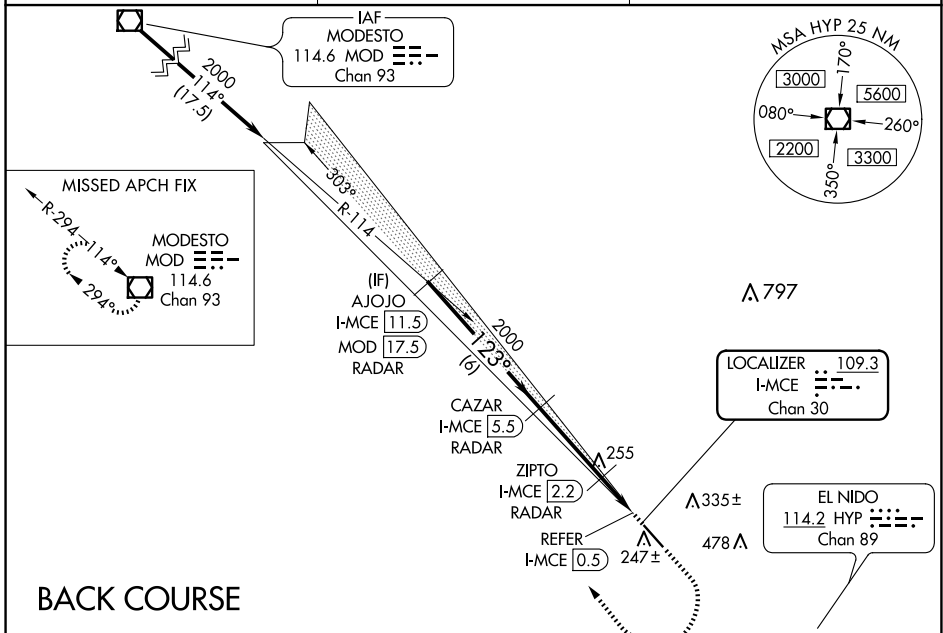
LOC/DME I-MCE 109.3 Chan 30	APP CRS 123°	Rwy Idg TDZE 155 Apt Elev 155	5914
--	------------------------	---	-------------

LOC BC RWY 12

MERCED YOSEMITE RGNL (MCE)

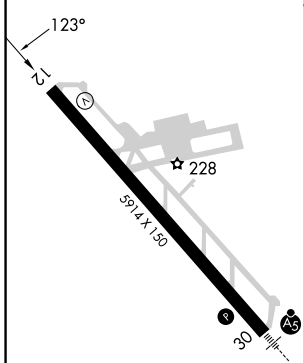
DME or RADAR required.	MISSED APPROACH: Climb to 1000 then climbing right turn to 3000 direct MOD VOR/DME and hold.
<p>▼ Rwy 12 helicopter visibility reduction below 3/4 SM NA.</p> <p>▲ NA Circling NA northeast of Rwy 12-30.</p>	

ASOS 132.175	NORCAL APP CON 120.95 269.45	UNICOM 122.7 (CTAF)
------------------------	--	-------------------------------



BACK COURSE

ELEV 155	TDZE 155
----------	----------



REIL Rwy 12

HIRL Rwy 12-30

FAF to MAP 5 NM

Knots	60	90	120	150	180
Min:Sec	5:00	3:20	2:30	2:00	1:40

	AJOJO I-MCE 11.5 RADAR	CAZAR I-MCE 5.5 RADAR	ZIPTO I-MCE 2.2 RADAR	REFER I-MCE 0.5	1000	3000	MOD
	2000	2000	640	640	↑	↷	☐
Disregard glide slope indications.							
	6 NM	3.3 NM	1.3 NM	0.4 NM	0.6 NM		
CATEGORY	A		B		C		D
S-12	640-1 485 (500-1)		640-1 485 (500-1)		640-1 485 (500-1)		485 (500-1)
CIRCLING	640-1 485 (500-1)		640-1 485 (500-1)		640-1 485 (500-1)		720-2 565 (600-2)
ZIPTO FIX MINIMUMS							
S-12	520-1 365 (400-1)		NA				
CIRCLING	560-1 405 (500-1)		620-1 465 (500-1)		620-1 465 (500-1)		720-2 565 (600-2)

SW-2, 15 MAY 2025 to 12 JUN 2025

SW-2, 15 MAY 2025 to 12 JUN 2025