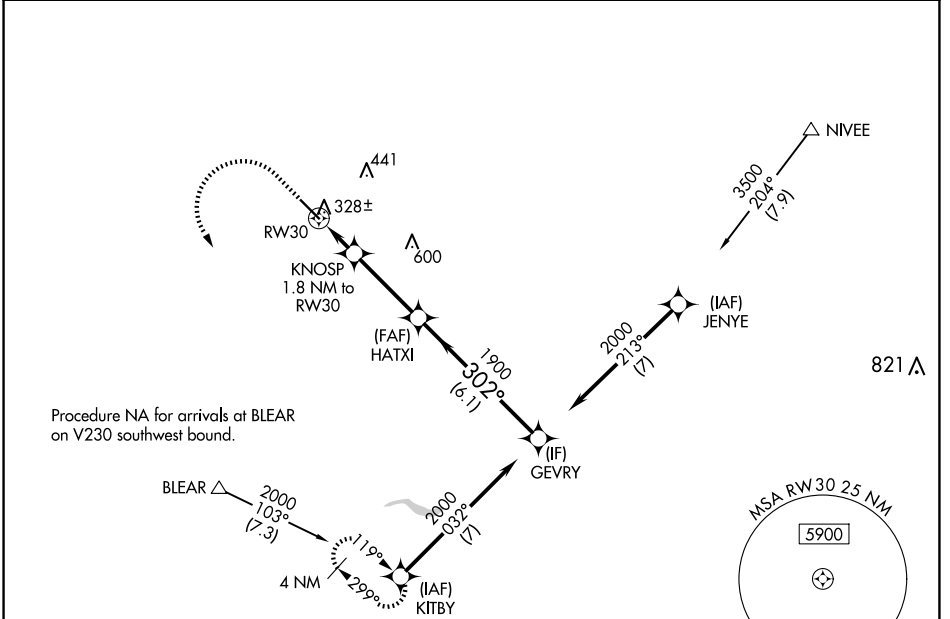


WAAS CH 90209 W30A	APP CRS 302°	Rwy Idg TDZE 255 Apt Elev 255	5545 255 255
--	------------------------	---	---

RNAV (GPS) RWY 30

MADERA MUNI (M.A.E.)

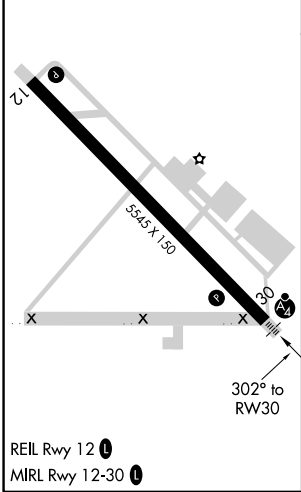
RNP APCH - GPS.		MALSF 	MISSED APPROACH: Climb to 800 then climbing left turn to 2000 to KITBY and hold.
For uncompensated Baro-VNAV systems, LNAV/VNAV NA below -2°C or above 54°C. Inop table does not apply to LPV and LNAV/VNAV Cat A/B/C.			
ASOS 134.725	FRESNO APP CON 119.45	CINC DEL 119.45	UNICOM 122.8 (CTAF) 0



SW-2, 15 MAY 2025 to 12 JUN 2025

SW-2, 15 MAY 2025 to 12 JUN 2025

ELEV 255	TDZE 255
----------	----------



800	2000	KITBY	VGSI and RNAV glidepath not coincident (VGSI Angle 3.00/TCH 34).			
			KNOSP 1.8 NM to RW30	HATXI 1900	GEVRY 2000	
			1.1 NM to RW30	1900	2000	
			1.1 NM	0.7 NM	3.3 NM	6.1 NM
			860	1900	2000	GP 3.00° TCH 35
CATEGORY	A	B	C	D		
LPV DA	505-3/4		250 (300-3/4)	NA		
LNAV/VNAV DA	505-3/4		250 (300-3/4)	NA		
LNAV MDA	640-3/4	385 (400-3/4)		640-7/8	385 (400-7/8)	NA
CIRCLING	680-1	720-1	760-1 1/2	NA		
	425 (500-1)	465 (500-1)	505 (600-1 1/2)			