

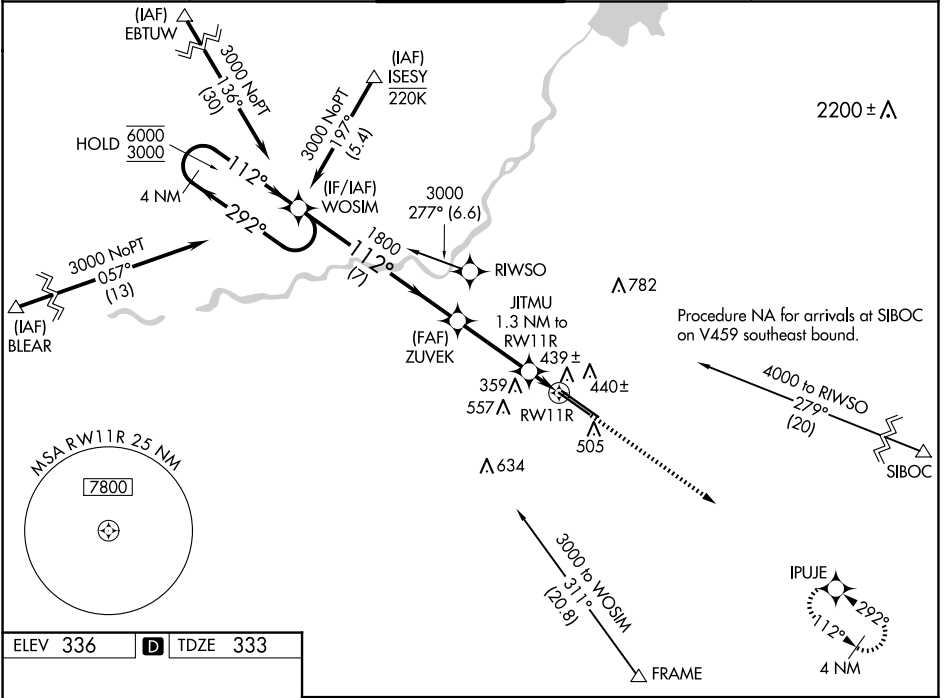
WAAS CH <b>78330</b> W <b>11B</b>	APP CRS <b>112°</b>	Rwy Idg TDZE Apt Elev	<b>8008</b> <b>333</b> <b>336</b>
---	------------------------	-----------------------------	---

# RNAV (GPS) RWY 11R

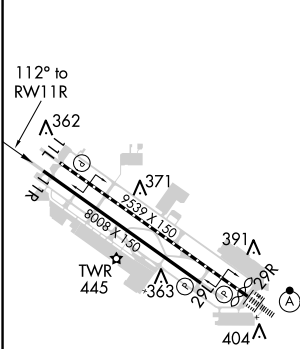
FRESNO YOSEMITE INTL (FAT)

RNP APCH.	MISSED APPROACH: Climb to 2600 direct IPUJE and hold.
<p>▼ Rwy 11R helicopter visibility reduction below 3/4 SM NA. For uncompensated Baro-VNAV systems, LNAV/VNAV NA below -1°C or above 54°C.</p>	

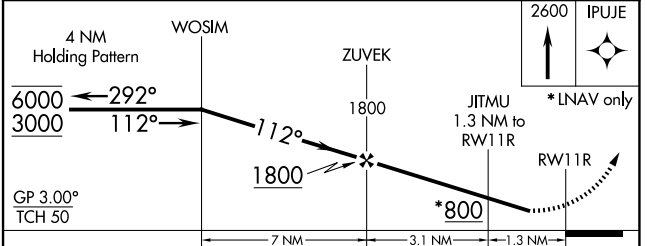
ATIS <b>121.35 273.6</b>	FRESNO APP CON <b>119.6 351.95</b>	FRESNO TOWER <b>118.2 251.1</b>	GND CON <b>121.7 348.6</b>	CLNC DEL <b>124.35 348.6</b>
-----------------------------	---------------------------------------	------------------------------------	-------------------------------	---------------------------------



ELEV 336	<b>D</b>	TDZE 333
----------	----------	----------



REIL Rwy 11L and 11R  
HIRL Rwy 11L-29R  
MIRL Rwy 11R-29L  
TDZ/CL Rwy 29R



CATEGORY	A	B	C	D
LPV DA		584-3/4	251 (300-3/4)	
LNAV/VNAV DA		620-7/8	287 (300-7/8)	
LNAV MDA		700-1	367 (400-1)	
<b>C</b> CIRCLING	820-1	484 (500-1)	920-1 1/2 584 (600-1 1/2)	920-2 584 (600-2)

SW-2, 15 MAY 2025 to 12 JUN 2025

SW-2, 15 MAY 2025 to 12 JUN 2025