

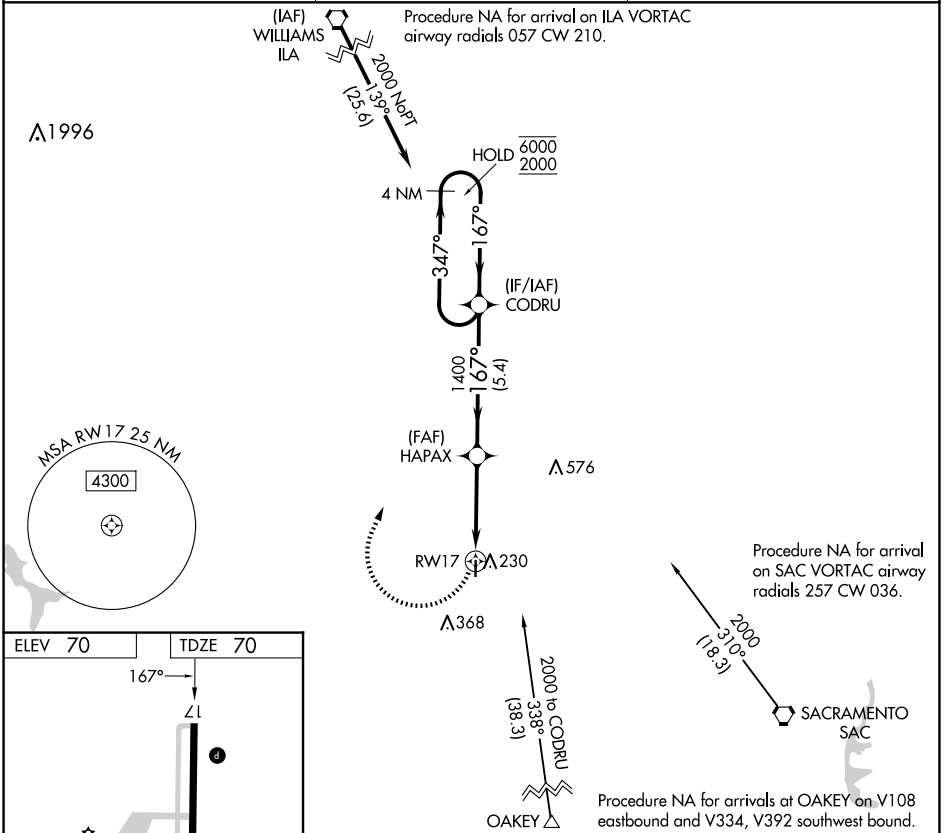
APP CRS 167°	Rwy Idg 3176
	TDZE 70
	Apt Elev 70

RNAV (GPS) RWY 17

UNIVERSITY (EDU)

RNP APCH - GPS.	MISSED APPROACH: Climbing right turn to 2000 direct CODRU and hold.
Rwy 17 helicopter visibility reduction below 1 SM NA. Procedure NA at night.	

AWOS-3 119.025	TRAVIS APP CON 126.6 281.45	UNICOM 123.075 (CTAF)
--------------------------	---------------------------------------	---------------------------------



ELEV 70	TDZE 70	Visual Segment - Obstacles.	
CATEGORY	A	B	C D
LNAV MDA	520-1	450 (500-1)	NA

MIRL Rwy 17-35
 REIL Rwy 17 and 35

SW-2, 15 MAY 2025 to 12 JUN 2025

SW-2, 15 MAY 2025 to 12 JUN 2025