

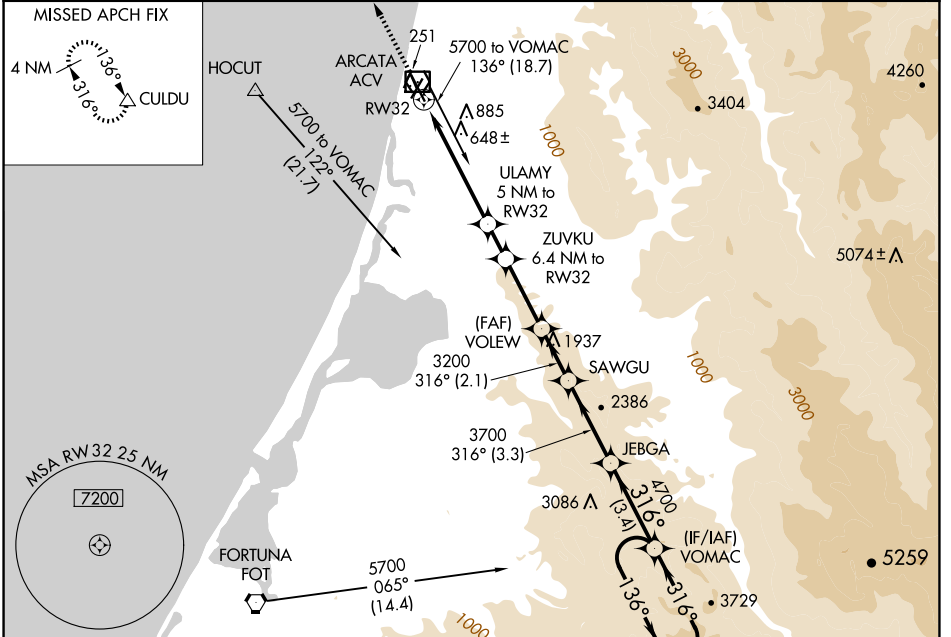
WAAS CH 63108 W32A	APP CRS 316°	Rwy Idg TDZE 221 Apt Elev 222	5846
--	------------------------	---	-------------

RNAV (GPS) RWY 32

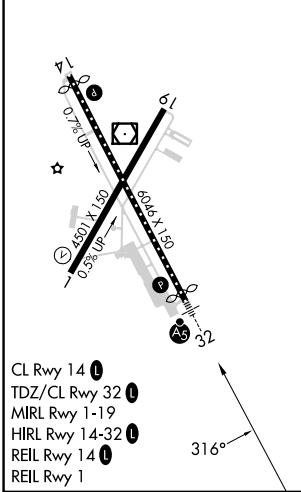
CALIFORNIA REDWOOD COAST-HUMBOLDT COUNTY (ACV)

▼ Baro-VNAV NA. Circling NA northeast of Rwy 14-32. ▲ DME/DME RNP-0.3 NA.	MALSR 	MISSED APPROACH: Climb to 3000 direct CULDU and hold.
--	------------------	--

ASOS 118.525	SEATTLE CENTER 124.85 306.3	UNICOM 123.0 (CTAF)
-------------------------------	--	--------------------------------------



ELEV 222	D	TDZE 221
----------	----------	----------



ARCATA/EUREKA, CALIFORNIA
Amdt 2A 26APR18

3000 CULDU	VGS1 and RNAV glidepath not coincident (VGS1 Angle 3.00/TCH 43).				JEBGA	VOMAC	5 NM Holding Pattern
*LNAV only.	ULAMY 6.4 NM to RW32	ZUVKU 6.4 NM to RW32	VOLEW 3200	SAWGU 3700	JEBGA 4700	VOMAC 4700	5700
2 NM to RW32	1860	2300*	3200	3700	4700	5700	GP 3.00° TCH 47
2 NM	3 NM	1.4 NM	2.8 NM	2.1 NM	3.3 NM	3.4 NM	
CATEGORY	A		B		C		D
LPV DA	441/18		220 (300-½)				
LNAV/VNAV DA	1056-2½		835 (900-2½)				
LNAV MDA	900/24 679 (700-½)	900/40 679 (700-¾)	900-1½		679 (700-1½)		
C CIRCLING	900-1 678 (700-1)		900-2 678 (700-2)		900-2¼ 678 (700-2¼)		

RNAV (GPS) RWY 32

CALIFORNIA REDWOOD COAST-HUMBOLDT COUNTY (ACV)
40°59'N-124°07'W

SW-2, 15 MAY 2025 to 12 JUN 2025

SW-2, 15 MAY 2025 to 12 JUN 2025