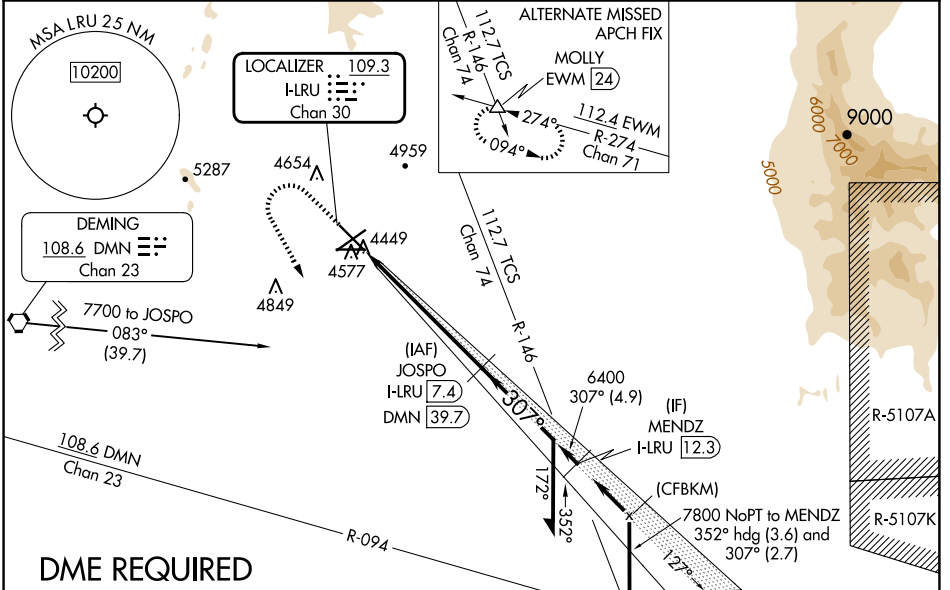


LOC/DME I-LRU 109.3 Chan 30	APP CRS 307°	Rwy ldg 7500 TDZE 4444 Apt Elev 4457
--	------------------------	---

ILS or LOC RWY 30

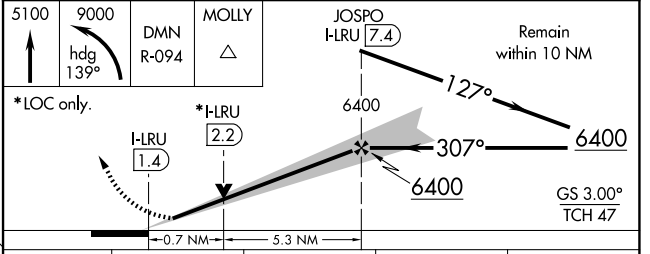
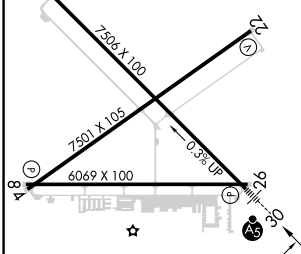
LAS CRUCES INTL(LRU)

<p>V NA</p> <p>DME required. When local altimeter setting not received, use Deming altimeter setting: increase DA to 4758 feet and all visibilities 1/8 mile; increase all MDA 120 feet and visibility Cat C and D 1/2 mile. VDP NA when using Deming altimeter setting.</p>	<p>MALSR</p>	<p>MISSED APPROACH: Climb to 5100 then climbing left turn to 9000 on heading 139° and on DMN VORTAC R-094 to MOLLY INT/DMN 46.7 DME and hold, continue climb-in-hold to 9000.</p>
	<p>AWOS-3 119.025</p> <p>ALBUQUERQUE CENTER 128.2 285.5</p> <p>UNICOM 122.7 (CTAF)</p>	



ELEV 4457	D	TDZE 4444
------------------	----------	------------------

Procedure NA for arrivals at MOLLY on V611 southeast bound.



CATEGORY	A	B	C	D
S-ILS 30	4644-1/2 200 (200-1/2)			
S-LOC 30	4720-1/2 276 (300-1/2)			
C CIRCLING	4900-1 443 (500-1)	5040-1 583 (600-1)	5320-2 1/2 863 (900-2 1/2)	5320-2 3/4 863 (900-2 3/4)

SW-1, 15 MAY 2025 to 12 JUN 2025

SW-1, 15 MAY 2025 to 12 JUN 2025