

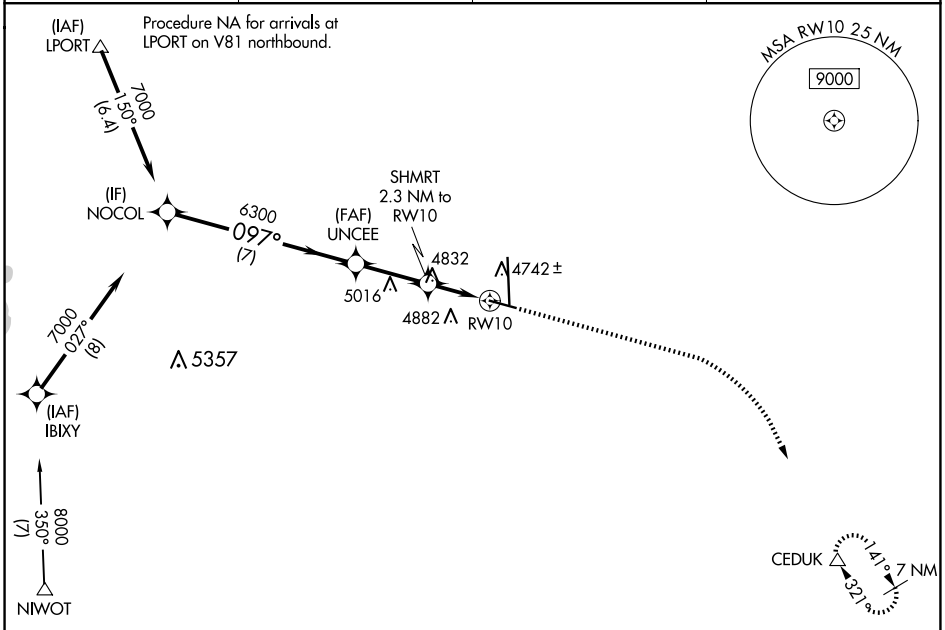
WAAS CH <b>62900</b> <b>W10A</b>	APP CRS <b>097°</b>	Rwy Idg TDZE Apt Elev	<b>5801</b> <b>4661</b> <b>4697</b>
--	------------------------	-----------------------------	---

# RNAV (GPS) RWY 10

GREELEY-WELD COUNTY (GXY)

RNP APCH.	MISSED APPROACH: Climb to 5400 then climbing right turn to 7000 direct CEDUK and hold.
<p><b>▽</b> For uncompensated Baro-VNAV systems, LNAV/VNAV NA below -24°C or above 54°C.</p> <p><b>△</b></p>	

AWOS-3PT <b>135.175</b>	DENVER APP CON <b>134.85 251.125</b>	CLNC DEL <b>126.65</b>	UNICOM <b>122.7 (CTAF) 0</b>
----------------------------	---	---------------------------	---------------------------------

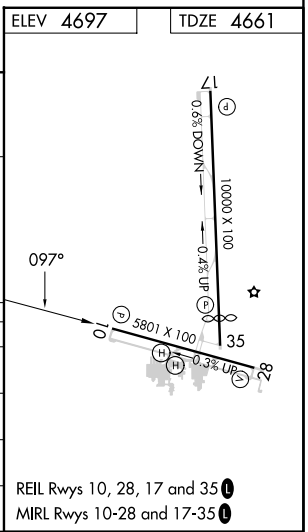


SW-1, 15 MAY 2025 to 12 JUN 2025

SW-1, 15 MAY 2025 to 12 JUN 2025

Procedure NA for arrivals at NIWOT on V575 southeast bound and V220 southwest bound.

VGSi and RNAV glidepath not coincident NOCOL (VGSi Angle 3.00/TCH 43).				
7000		UNCEE		5400 7000 CEDUK
GP 3.00° TCH 50		*5440		*LNAV only
7 NM		2.7 NM		0.9 NM 1.4 NM
CATEGORY	A	B	C	D
LPV DA		4911-3/4	250 (300-3/4)	
LNAV/VNAV DA		4920-3/4	259 (300-3/4)	
LNAV MDA	5140-1	479 (500-1)	5140-1 3/8	479 (500-1 3/8)
<b>CIRCLING</b>	5140-1 443 (500-1)	5200-1 503 (600-1)	5200-1 1/2 503 (600-1 1/2)	5380-2 1/4 683 (700-2 1/4)



REIL Rwy 10, 28, 17 and 35 **0**  
MIRL Rwy 10-28 and 17-35 **0**