

| | | | |
|--|------------------------|-----------------------------|---|
| WAAS CH 70419 W22A | APP CRS 222° | Rwy Idg TDZE Apt Elev | 5675 4310 4314 |
|--|------------------------|-----------------------------|---|

RNAV (GPS) RWY 22

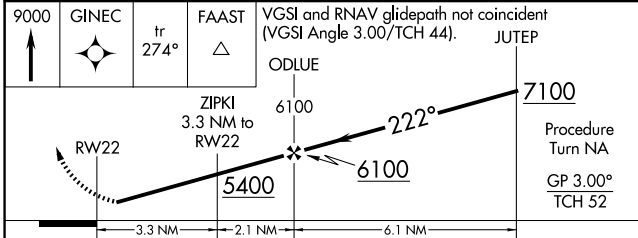
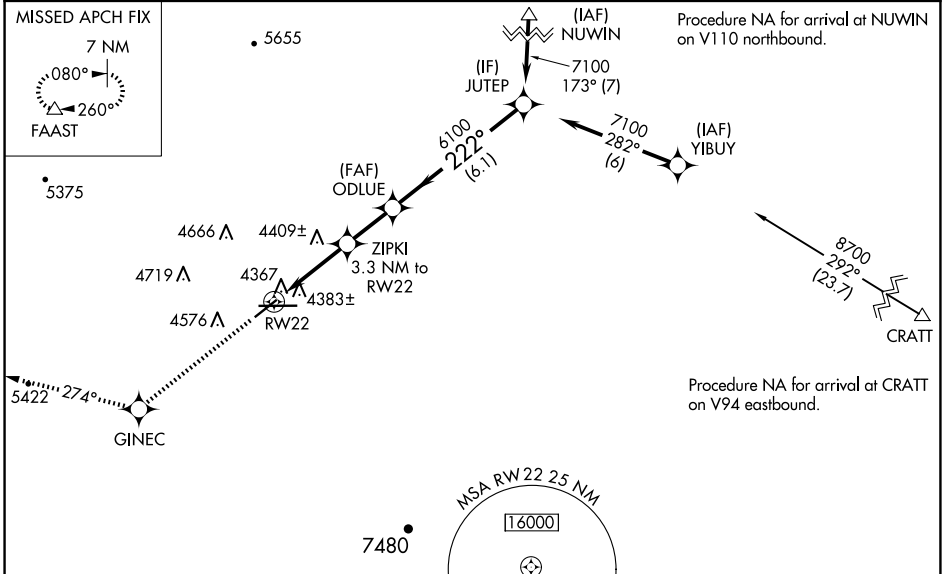
DEMING MUNI (DMN)

RNP APCH - GPS.

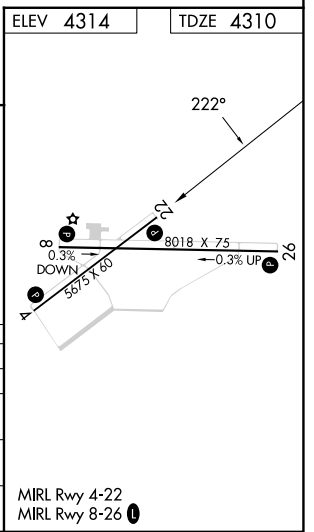
⚠ For uncompensated Baro-VNAV systems, LNAV/VNAV NA below -23°C or above 40°C. Baro-VNAV NA when using Las Cruces altimeter setting. When local altimeter setting not received, use Las Cruces altimeter setting and increase all DA 114 feet and all MDA 120 feet; increase LPV and LNAV/VNAV all Cats visibility ¼ mile, increase LNAV Cats C and D visibility ½ mile, increase Circling Cat B visibility ½ mile and Circling Cats C and D visibility ½ mile. Rwy 22 helicopter visibility reduction below 1 SM NA. Straight-in Rwy 22 NA at night, Circling Rwy 22, 26 NA at night.

MISSED APPROACH: Climb to 9000 direct GINEC and on track 274° to FAAST and hold.

| | | |
|------------------------|--|---------------------------------|
| ASOS 118.525 | ALBUQUERQUE CENTER 128.2 285.5 | UNICOM 122.8 (CTAF) 0 |
|------------------------|--|---------------------------------|



| CATEGORY | A | B | C | D |
|--------------|-----------------------|-----------------------|-----------------------|---------------------------|
| LPV DA | | 4560-1 | 250 (300-1) | |
| LNAV/VNAV DA | | 4637-1 ¼ | 327 (400-1 ¼) | |
| LNAV MDA | 4660-1 | 350 (400-1) | | 4660-1 ¼ 350 (400-1 ¼) |
| CIRCLING | 4820-1 506 (600-1) | 4940-1 626 (700-1) | 5020-2 706 (800-2) | 5020-2 ¼ 706 (800-2 ¼) |



SW-1, 15 MAY 2025 to 12 JUN 2025

SW-1, 15 MAY 2025 to 12 JUN 2025