

WAAS CH <b>90318</b> <b>W34B</b>	APP CRS <b>353°</b>	Rwy Idg <b>12000</b> TDZE <b>5354</b> Apt Elev <b>5434</b>
--	------------------------	--

# RNAV (GPS) Y RWY 34R

DENVER INTL (DEN)

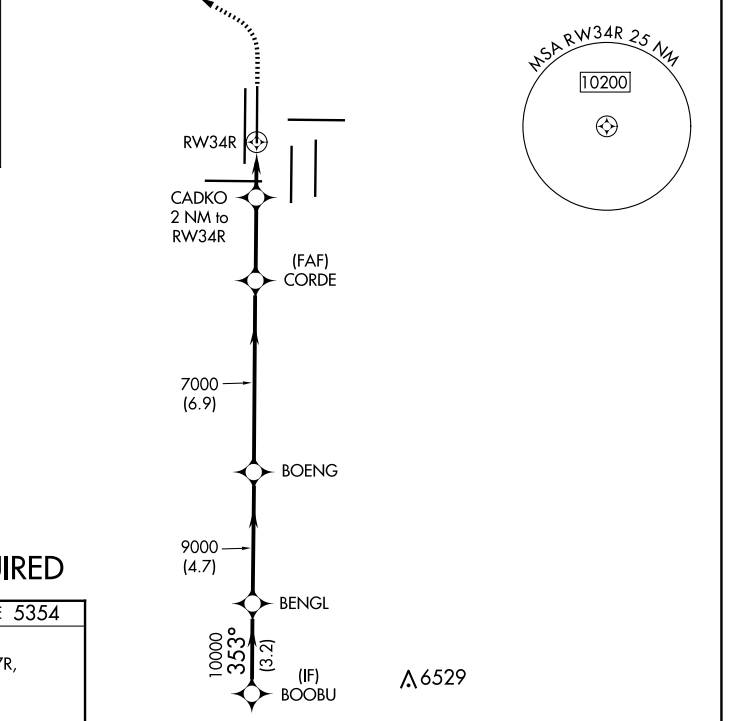
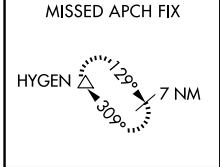
⚠ For uncompensated Baro-VNAV systems, LNAV/VNAV NA below -25°C (-13°F) or above 46°C (114°F). DME/DME RNP-0.3 NA. LNAV procedure NA during simultaneous operations. Simultaneous approach authorized with Rwy 35L/R. Use of FD or AP providing RNAV track guidance required during simultaneous operations.

ALS-F-2



MISSED APPROACH: Climb to 6000 then climbing left turn to 10000 direct HYGEM and hold.

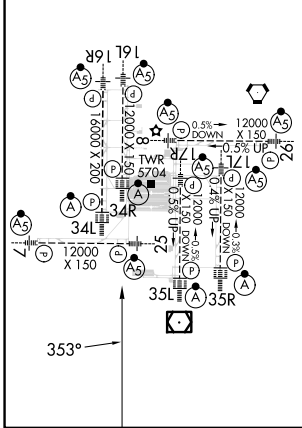
D-ATIS <b>125.6 379.9 (ARR)</b> <b>134.025 (DEP)</b>	DENVER APP CON <b>119.3 307.3 (N)</b> <b>120.35 379.3 (S)</b>	DENVER TOWER <b>135.3 351.95</b>	GND CON <b>121.35 379.175 (W)</b> <b>121.85 377.1 (E)</b>	CLNC DEL <b>118.75</b>	CPDLC
--	---	-------------------------------------	---	---------------------------	-------



## RADAR REQUIRED

ELEV 5434	<b>D</b>	TDZE 5354
-----------	----------	-----------

HIRL all Rwys  
TDZ/CL Rwy 7, 16L, 16R, 17R,  
26, 34L, 34R, 35L, 35R



VGSI and RNAV glidepath not coincident (VGSI Angle 3.00/TCH 63).

BOOBU	BENG	BOENG	CORDE	CADKO	HYGEM
10000	9000	7000	6000	10000	△
GP 3.00°	TCH 59				
	3.2 NM	4.7 NM	6.9 NM	3 NM	2 NM
CATEGORY	A	B	C	D	
LPV DA		5554/18	200 (200-½)		
LNAV/VNAV DA		5838/60	484 (500-1¼)		
LNAV MDA	5940/24	586 (600-½)	5940-1¼	586 (600-1¼)	

\*LNAV only

\*6040

SW-1, 15 MAY 2025 to 12 JUN 2025

SW-1, 15 MAY 2025 to 12 JUN 2025