

WAAS CH 93529 W17B	APP CRS 173°	Rwy Idg 12000 TDZE 5392 Apt Elev 5434
--	------------------------	--

RNAV (GPS) Y RWY 17R

DENVER INTL (DEN)

▽ For uncompensated Baro-VNAV systems, LNAV/VNAV NA below -25°C (-13°F) or above 46°C (116°F). Simultaneous approach authorized with Rwy 16L/16R and 17L. DME/DME RNP-0.3 NA. For inoperative MALS/R, increase LNAV/VNAV all Cats visibility to 1½ mile, and LNAV Cat C/D to 1½ mile. LNAV procedure NA during simultaneous operations. Use of FD or AP providing RNAV track guidance required during simultaneous operations.

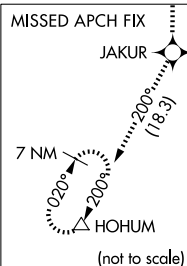
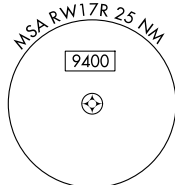
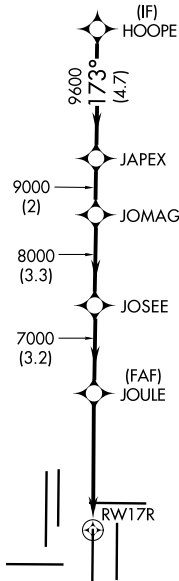
MALS/R

MISSED APPROACH:
Climb to 10000 direct JAKUR and on track 200° to HOHUM and hold.

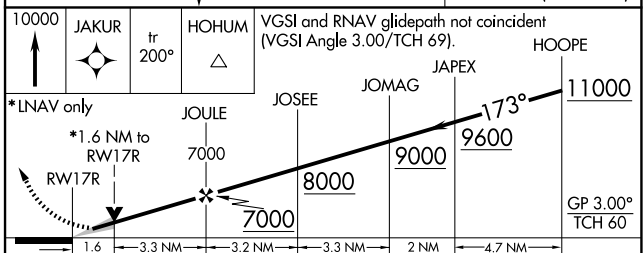
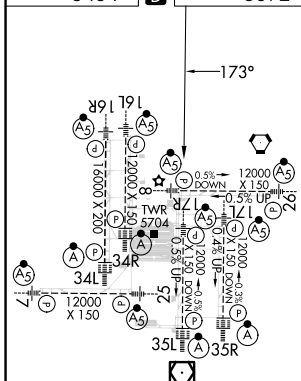
D-ATIS 125.6 379.9 (ARR) 134.025 (DEP)	DENVER APP CON 119.3 307.3 (N) 120.35 379.3 (S)	DENVER TOWER 124.3 322.45	GND CON 121.35 379.175 (W) 121.85 377.1 (E)	CLNC DEL 118.75	CPDLC
--	---	-------------------------------------	---	---------------------------	-------

RADAR REQUIRED

△ 6260



ELEV 5434	D	TDZE 5392
------------------	----------	------------------



CATEGORY	A	B	C	D
LPV DA	5592/18		200 (200-½)	
LNAV/VNAV DA	5857/60		465 (500-1¼)	
LNAV MDA	5940/24 548 (600-½)		5940-1¼ 548 (600-1¼)	

HIRL all Rws
TDZ/CL Rws 7, 16L, 16R, 17R,
26, 34L, 34R, 35L, 35R