


WAAS CH <b>81830</b> <b>W17A</b>	APP CRS <b>173°</b>	Rwy Idg <b>12000</b> TDZE <b>5339</b> Apt Elev <b>5434</b>
--	------------------------	--

# RNAV (GPS) Y RWY 17L

DENVER INTL (DEN)

▼ For uncompensated Baro-VNAV systems, LNAV/VNAV NA below -25°C (-13°F) or above 48°C (119°F). DME/DME RNP-0.3 NA. LNAV procedure NA during simultaneous operations. For inoperative MALSRL increase LNAV Cats C/D visibility to RVR 5500. Use of FD or AP providing RNAV track guidance required during simultaneous operations. Simultaneous approach authorized with Rwy 16L/16R and 17R.  
# RVR 1800 authorized with use of FD or AP or HUD to DA.

MALSRL

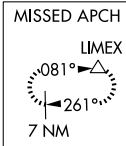
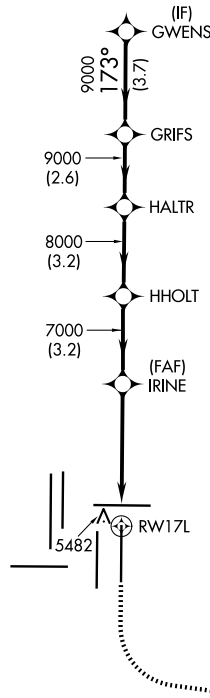
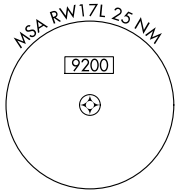


MISSED APPROACH: Climb to 5900 then climbing left turn to 10000 direct LIMEX and hold.

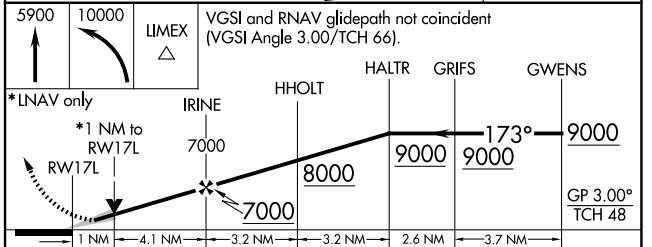
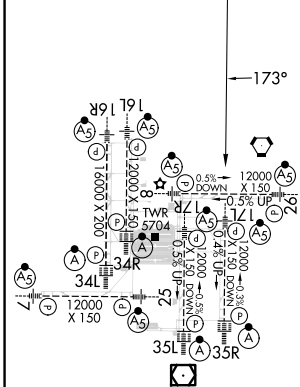
D-ATIS <b>125.6 379.9</b> (ARR) <b>134.025</b> (DEP)	DENVER APP CON <b>119.3 307.3</b> (N) <b>120.35 379.3</b> (S)	DENVER TOWER <b>132.35 239.275</b>	GND CON <b>121.35 379.175</b> (W) <b>121.85 377.1</b> (E)	CLNC DEL <b>118.75</b>	CPDLC
--	---	---------------------------------------	---	---------------------------	-------

## RADAR REQUIRED

Λ 6260



ELEV 5434	<b>D</b>	TDZE 5339
-----------	----------	-----------



CATEGORY	A	B	C	D
LPV DA#	5539/24 200 (200-½)			
LNAV/VNAV DA	5648/24 309 (300-½)			
LNAV MDA	5700/24 361 (300-½)		5700/35 361 (300-⅝)	

HIRL all Rwys  
TDZ/CL Rwys 7, 16L, 16R, 17R,  
26, 34L, 34R, 35L, 35R

SW-1, 15 MAY 2025 to 12 JUN 2025

SW-1, 15 MAY 2025 to 12 JUN 2025