

APP CRS **041°**
 Rwy Idg **5598**
 TDZE **202**
 Apt Elev **203**

RNAV (GPS) RWY 4

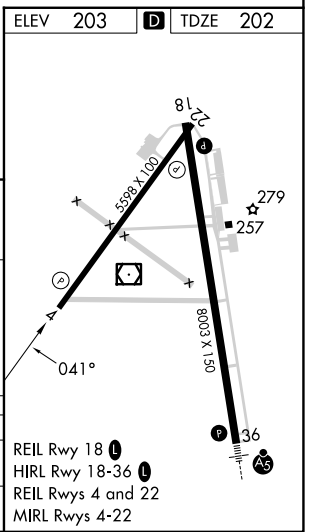
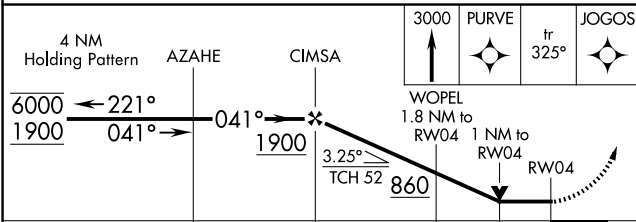
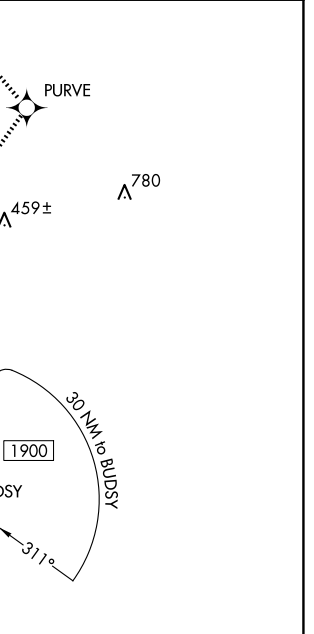
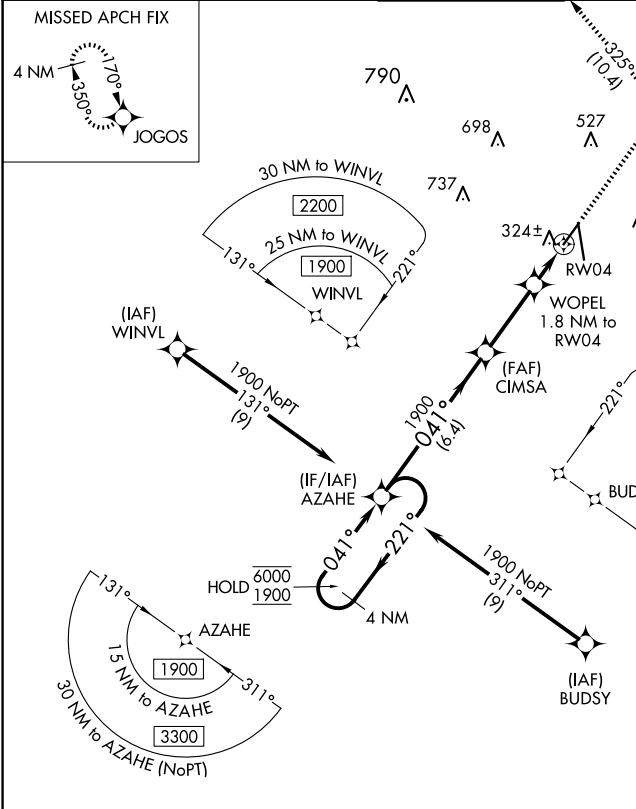
VALDOSTA RGNL (VLD)

RNP APCH - GPS.

▼
▲ Rwy 4 helicopter visibility reduction below 3/4 SM NA.

MISSED APPROACH: Climb to 3000 direct PURVE and on track 325° to JOGOS and hold.

ASOS 126.225	VALDOSTA APP CON * 126.6 285.6	VALDOSTA TOWER * 128.35 (CTAF) 0	GND CON 121.7	UNICOM 122.95
------------------------	--	--	-------------------------	-------------------------



CATEGORY	A	B	C	D
LNAV MDA	580-1 378 (400-1)			
CIRCLING	640-1 437 (500-1)	700-1 497 (500-1)	900-2 697 (700-2)	1020-2 3/4 817 (900-2 3/4)

REIL Rwy 18
 HIRL Rwy 18-36
 REIL Rwy 4 and 22
 MIRL Rwy 4-22

SE-4, 15 MAY 2025 to 12 JUN 2025

SE-4, 15 MAY 2025 to 12 JUN 2025