

TACAN Y RWY 18L

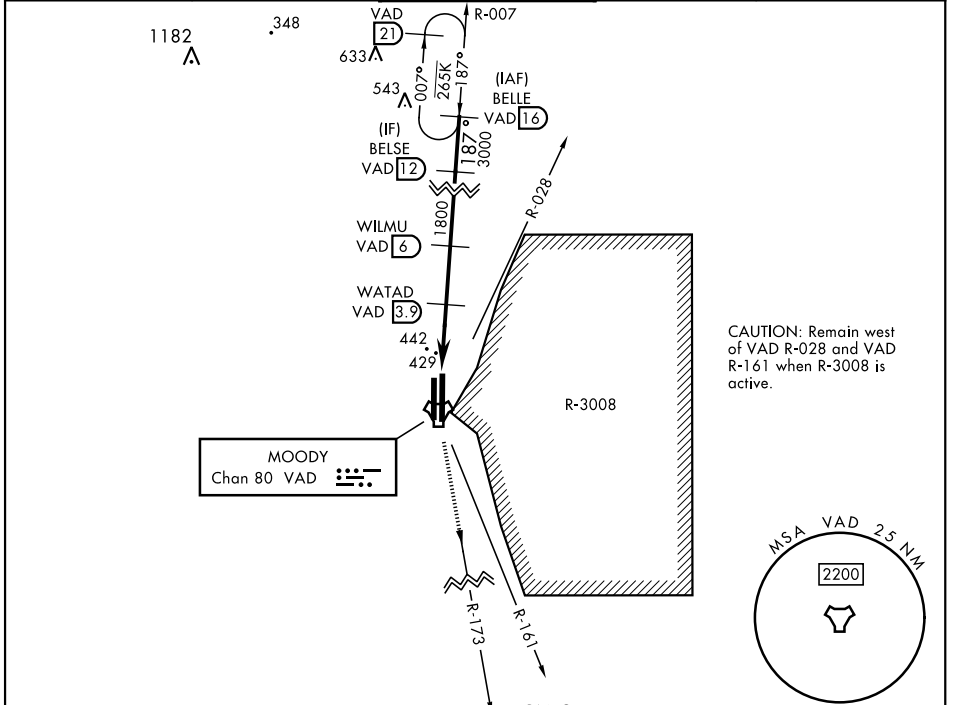
TACAN VAD Chan 80	APCH CRS 187°	Rwy Idg TDZE Arprt Elev 9300 233 233
-----------------------------	-------------------------	--

[USAF]

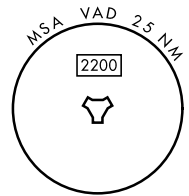
MOODY AFB (KVAD)

<p>▼ *When ALS inop, increase CAT AB RVR to 55 and vis to 1 mile, CAT CDE vis to 1 3/8 miles.</p>	ALS-F-1 (A1)	MISSED APPROACH: Climb to 3000 on VAD TACAN R-173 to CARLO and hold.

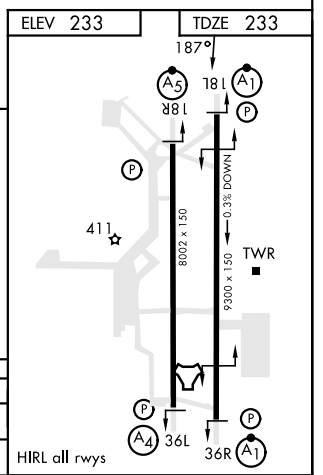
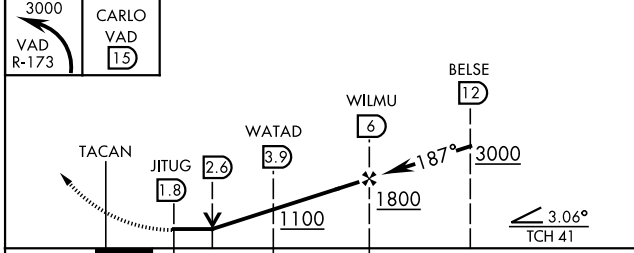
ATIS ★ 273.5	VALDOSTA APP CON 126.6 285.6	TOWER ★ 128.45 (CTAF) 257.625	GND CON 138.95 275.8	CLNC DEL 120.625 296.7
------------------------	--	---	--------------------------------	----------------------------------



CAUTION: Remain west of VAD R-028 and VAD R-161 when R-3008 is active.



ELEV 233	TDZE 233
----------	----------



CATEGORY	A	B	C	D	E
S-18L *	700/24 467 (500-1/2)		700/50 467 (500-1)		
CIRCLING	760-1 527 (600-1)		760-1 1/2 527 (600-1 1/2)	800-2 567 (600-2)	

TACAN Y RWY 18L

SE-4, 15 MAY 2025 to 12 JUN 2025

SE-4, 15 MAY 2025 to 12 JUN 2025