

HI-TACAN Z RWY 18L

TACAN VAD Chan 80	APCH CRS 187°	Rwy Idg TDZE Arprt Elev 9300 233 233
-----------------------------	-------------------------	--

[USAF]

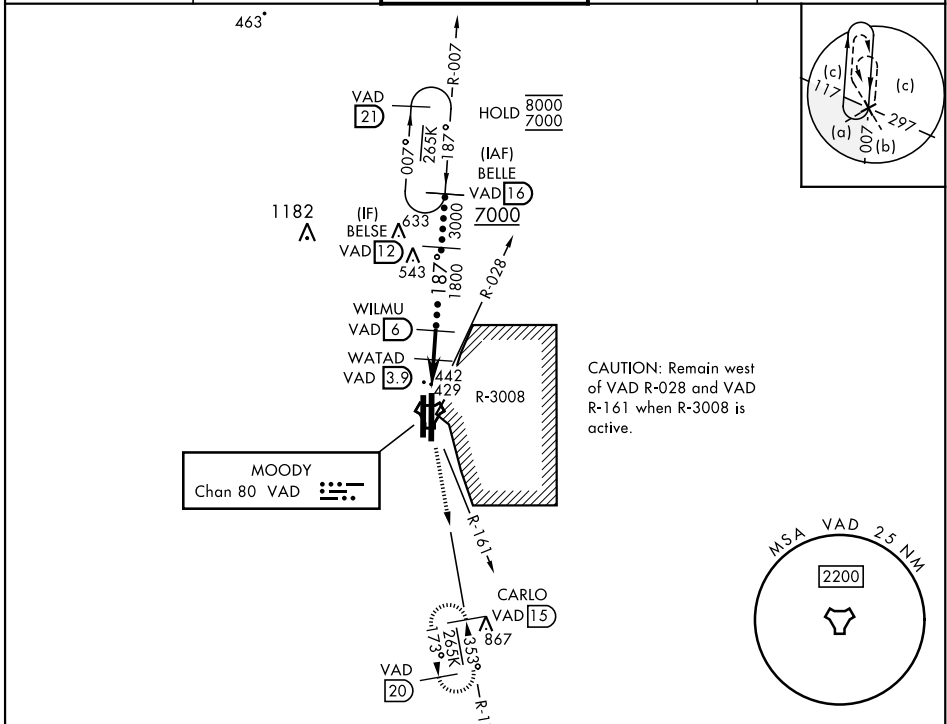
MOODY AFB (KVAD)

ALSF-1

 A1

 MISSED APPROACH: Climb to 3000 on VAD TACAN R-173 to CARLO and hold.

ATIS ★ 273.5	VALDOSTA APP CON 126.6 285.6	TOWER ★ 128.45 (CTAF) 257.625	GND CON 138.95 275.8	CLNC DEL 120.625 296.7
------------------------	--	---	--------------------------------	----------------------------------



EMERG SAFE ALT 100 NM 3300

3000 VAD R-173

CARLO VAD 15

TACAN

JITUG 1.8

WATAD 3.9

WILMU 6

BELSE 12

BELLE R-007 16

187°

7000

3000

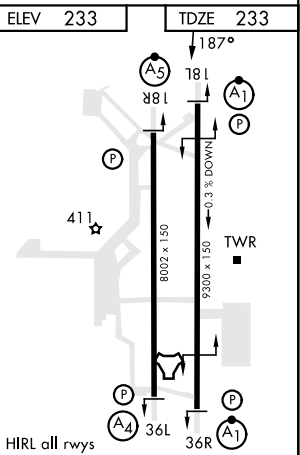
1100

1800

0.5 2.1 NM 2.1 NM

3.06° TCH 41

ELEV 233	TDZE 233		
CATEGORY	C	D	E
S-18L*	700/50	467 (500-1)	
CIRCLING	760-1½ 527 (600-1½)	800-2	567 (600-2)



HI-TACAN Z RWY 18L

SE-4, 15 MAY 2025 to 12 JUN 2025

SE-4, 15 MAY 2025 to 12 JUN 2025