

| | | | |
|--|------------------------|-----------------------------|---|
| WAAS CH 97603 W14A | APP CRS 135° | Rwy Idg TDZE Apt Elev | 6021 327 327 |
|--|------------------------|-----------------------------|---|

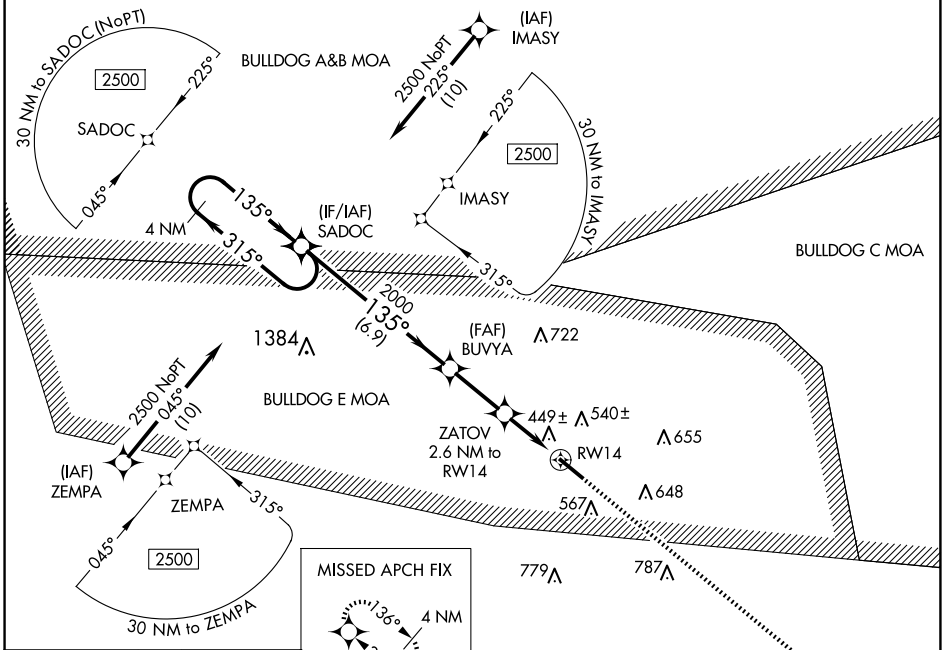
RNAV (GPS) RWY 14

EAST GEORGIA RGNL (SBO)

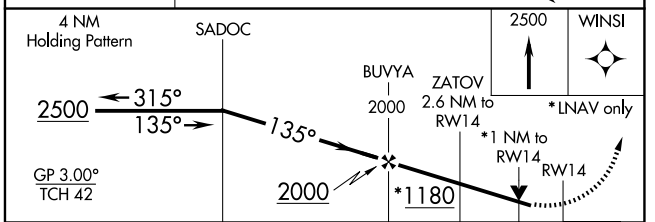
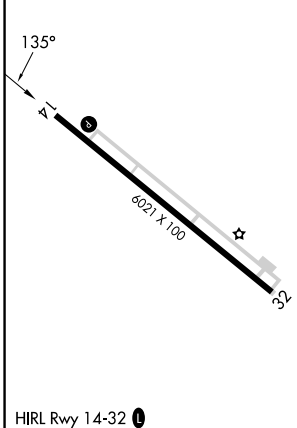
▼ Baro-VNAV and VDP NA when using Vidalia altimeter setting. For uncompensated Baro-VNAV systems, LNAV/VNAV NA below -15°C (5°F) or above 54°C (130°F). When local altimeter setting not received, use Vidalia altimeter setting and increase LPV DA to 708 feet, LNAV/VNAV DA to 698 feet, and all MDA 80 feet; increase LPV and LNAV/VNAV all Cats visibility ¼ SM, LNAV Cats C/D visibility ⅓ SM, and Circling Cats C/D visibility ¼ SM. Rwy 14 helicopter visibility reduction below ¼ SM NA. DME /DME RNP-0.3 NA.

MISSED APPROACH: Climb to 2500 direct WINSI and hold.

| | | |
|--------------------------|--|-----------------------------------|
| AWOS-3 133.375 | ATLANTA CENTER 127.95 343.75 | UNICOM 122.975 (CTAF) 0 |
|--------------------------|--|-----------------------------------|



| | |
|----------|----------|
| ELEV 327 | TDZE 327 |
|----------|----------|



| CATEGORY | A | B | C | D |
|--------------|-------------|-------------|-------------|--------------|
| LPV DA | | 643-1 | 316 (400-1) | |
| LNAV/VNAV DA | | 633-1 | 306 (400-1) | |
| LNAV MDA | | 700-1 | 373 (400-1) | |
| CIRCLING | 900-1 | 920-1 | 1000-2 | 1000-2¼ |
| | 573 (600-1) | 593 (600-1) | 673 (700-2) | 673 (700-2¼) |

SE-4, 15 MAY 2025 to 12 JUN 2025

SE-4, 15 MAY 2025 to 12 JUN 2025