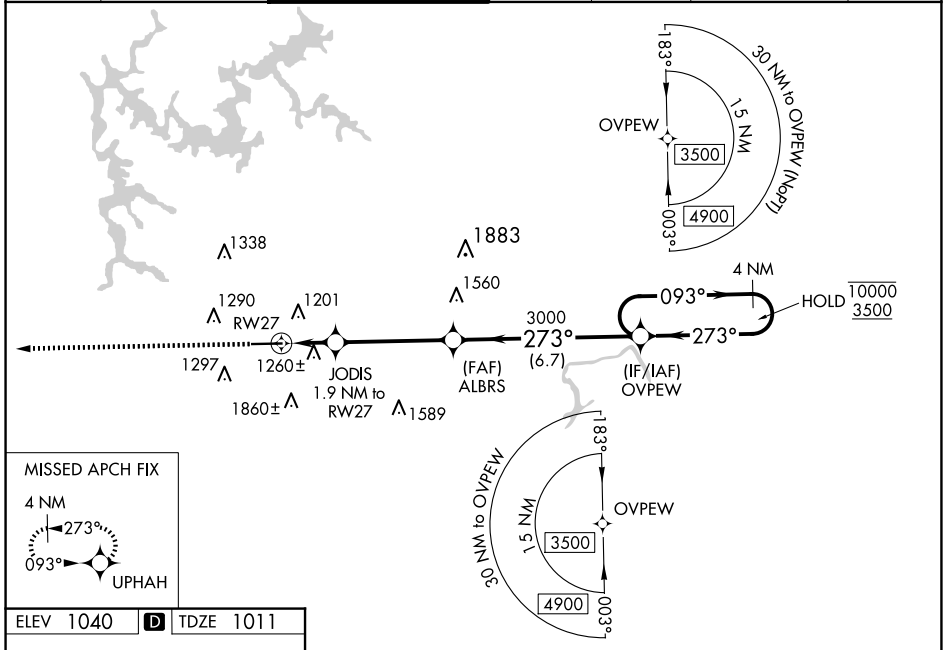


WAAS CH <b>97308</b> <b>W27A</b>	APP CRS <b>273°</b>	Rwy Idg TDZE <b>1011</b> Apt Elev <b>1040</b>	<b>5374</b>
--	------------------------	---	-------------

# RNAV (GPS) RWY 27

COBB COUNTY INTL/MCCOLLUM FLD (RYY)

RNP APCH-GPS.				MALSF		MISSED APPROACH: Climb to 3500 direct UPHAH and hold.	
<p>⚠ Inop table does not apply to LPV. For uncompensated Baro-VNAV systems, LNAV/VNAV NA below -17°C or above 54°C. For inop ALS, increase LNAV/VNAV all Cats and LNAV Cats C and D visibility to 1<math>\frac{1}{2}</math> SM.</p>							
ATIS <b>128.125</b>	ATLANTA APP CON <b>121.0 268.7</b>	MCCOLLUM TOWER ★ <b>125.9 (CTAF) 0</b>	GND CON <b>119.0</b>	CLNC DEL <b>119.0</b>	CLNC DEL <b>121.0 268.7</b> (When twr closed)	UNICOM <b>122.7</b>	



ELEV 1040 **D** TDZE 1011

MISSED APCH FIX  
4 NM  
093°  
UPHAH

HIRL Rwy 9-27 0

3500 UPHAH		4 NM Holding Pattern	
ALBRS	JODIS	3000	093°
1.9 NM to RW27	1.9 NM to RW27	6.7 NM	10000
1660	3000	273°	3500
1.9 NM	4.2 NM	6.7 NM	GP 3.00° TCH 46
CATEGORY	A	B	C
LPV DA	1211- $\frac{3}{4}$		200 (200- $\frac{3}{4}$ )
LNAV/VNAV DA	1520-1 $\frac{1}{4}$		509 (500-1 $\frac{1}{4}$ )
LNAV MDA	1520- $\frac{3}{4}$	509 (500- $\frac{3}{4}$ )	1520-1 $\frac{1}{4}$ 509 (500-1 $\frac{1}{4}$ )
<b>C</b> CIRCLING	1800-1	760 (800-1)	2180-3 1140 (1200-3)

SE-4, 15 MAY 2025 to 12 JUN 2025

SE-4, 15 MAY 2025 to 12 JUN 2025