

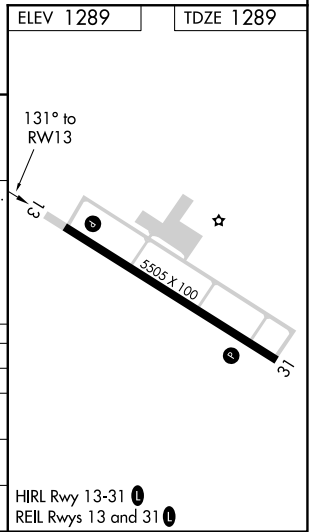
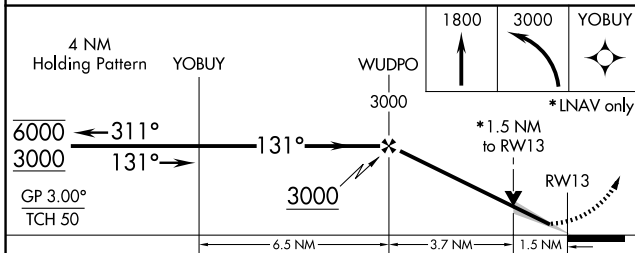
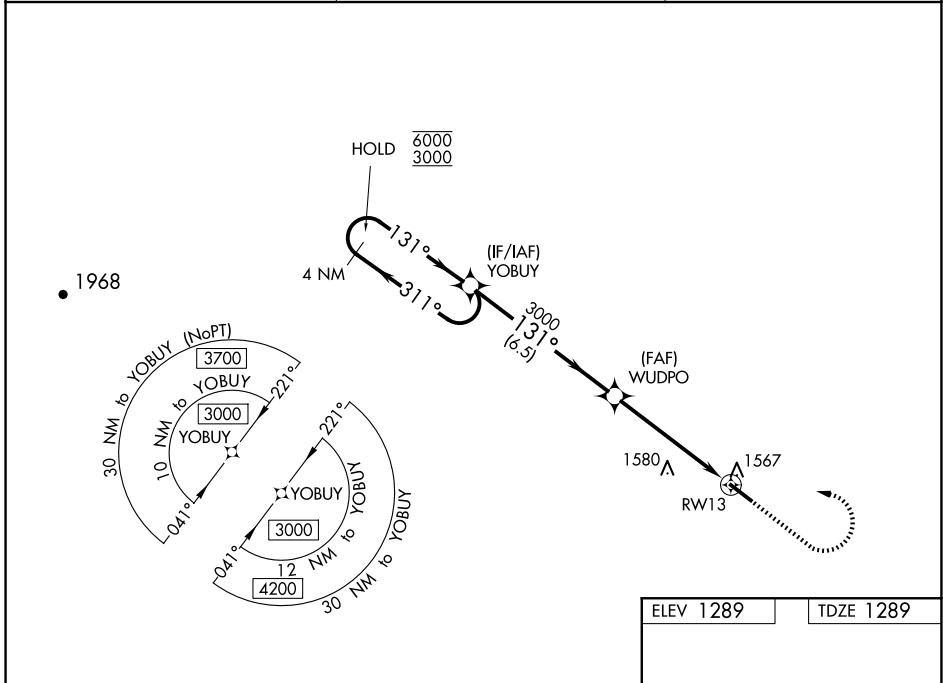
WAAS CH 99720 W13A	APP CRS 131°	Rwy Idg TDZE Apf Elev	5505 1289 1289
--	------------------------	-----------------------------	---

RNAV (GPS) RWY 13

PAULDING NORTHWEST ATLANTA (PUJ)

RNP APCH.	MISSED APPROACH: Climb to 1800 then climbing left turn to 3000 direct YOBUY and hold.
<p>For uncompensated Baro-VNAV systems, LNAV/VNAV NA below -17°C or above 54°C.</p>	

AWOS-3 126.225	ATLANTA APP CON 121.0 268.7	UNICOM 123.075 (CTAF) 0
--------------------------	---------------------------------------	-----------------------------------



CATEGORY	A	B	C	D
LPV DA		1507-3/4	218 (300-3/4)	
LNAV/VNAV DA		1763-1 3/8	474 (500-1 3/8)	
LNAV MDA	1820-1	531 (600-1)	1820-1 1/2	531 (600-1 1/2)
CIRCLING	1880-1	591 (600-1)	1940-1 3/4	1940-2
			651 (700-1 3/4)	651 (700-2)

SE-4, 15 MAY 2025 to 12 JUN 2025

SE-4, 15 MAY 2025 to 12 JUN 2025