

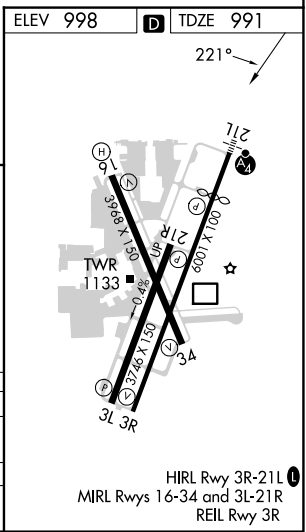
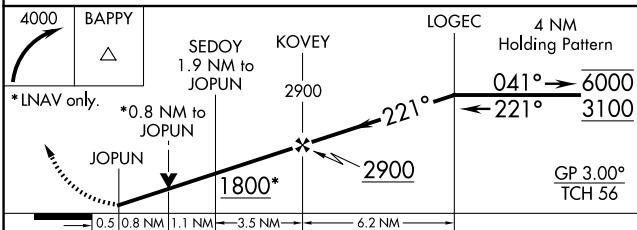
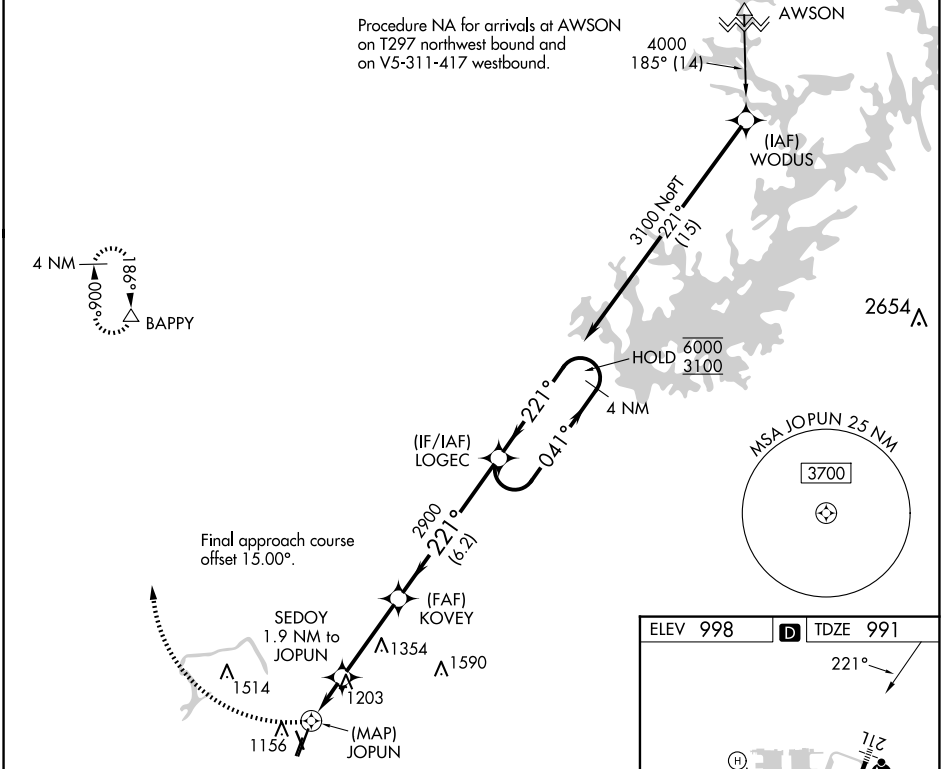
RNAV (GPS) Y RWY 21L

DEKALB-PEACHTREE (PDK)

APP CRS 221°	Rwy Idg 4996
	TDZE 991
	Apt Elev 998

RNP APCH.				MALSF		MISSED APPROACH: Climbing right turn to 4000 direct BAPPY and hold.	
<p>⚠ Circling Rwy 16, 34 NA at night. Rwy 21L helicopter visibility reduction below 3/4 SM NA. For uncompensated Baro-VNAV systems, procedure NA below -8°C or above 54°C. For inop ALS, increase LNAV/VNAV all Cats visibility to 1/2 SM and LNAV Cat A/B visibility to RVR 5500.</p>							

ATIS 128.4	ATLANTA APP CON 126,975 239,275	PEACHTREE TOWER* 120.9(CTAF) 281.5	GND CON 121.6	CLNC DEL 125.2	CLNC DEL 120.9 (When twr closed)	UNICOM 122.95	120.0
----------------------	---	--	-------------------------	--------------------------	---	-------------------------	--------------



CATEGORY	A	B	C	D
LNAV/VNAV DA	1449/55 458 (500-1)			
LNAV MDA	1460/40	469 (500-3/4)	1460/60	469 (500-1/4)
CIRCLING	1500-1	502 (600-1)	1840-2 1/2 842 (900-2 1/2)	2060-3 1062 (1100-3)

SE-4, 15 MAY 2025 to 12 JUN 2025

SE-4, 15 MAY 2025 to 12 JUN 2025