

WAAS CH 61135 W36A	APP CRS 004°	Rwy Idg TDZE 547 Apt Elev 551	4000
--	------------------------	---	-------------

RNAV (GPS) RWY 36

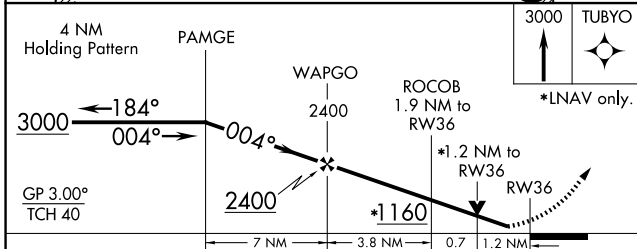
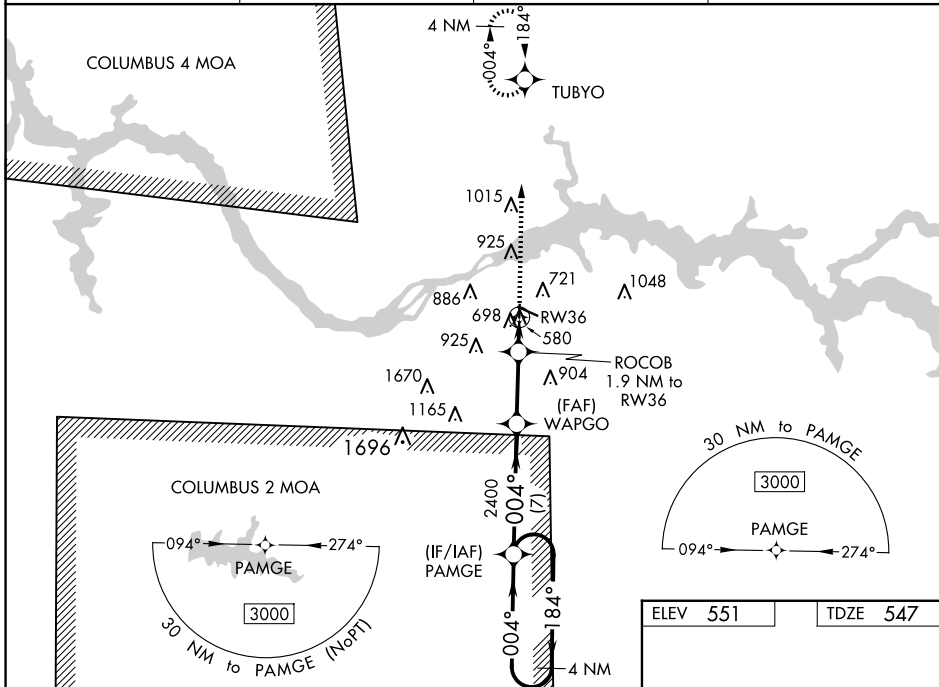
NORTHWEST ALABAMA RGNL (MISL)

RNP APCH-GPS.

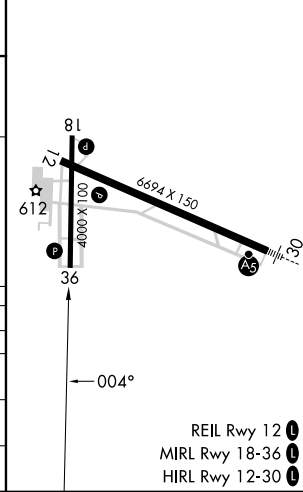
▼ Circling to Rwy 18 NA at night. For uncompensated Baro-VNAV systems, LNAV/VNAV NA below -4°C or above 54°C. Baro-VNAV and VDP NA when using Decatur altimeter setting. When local altimeter setting not received, use Decatur altimeter setting and increase LPV DA to 874, LNAV/VNAV DA to 1012 and all MDA 100 feet, increase LPV and LNAV/VNAV all Cats visibility ¼ mile, increase LNAV Cats C/D visibility ¼ mile, and Circling Cats C/D visibility ½ mile.

MISSED APPROACH:
Climb to 3000 direct TUBYO and hold.

ASOS 119.425	MEMPHIS CENTER 120.8 307.0	GCO 121.725	UNICOM 123.05 (CTAF)
------------------------	--------------------------------------	-----------------------	--------------------------------



ELEV 551	TDZE 547
-----------------	-----------------



CATEGORY	A	B	C	D
LPV DA		797-1	250 (300-1)	
LNAV/VNAV DA		935-1 $\frac{3}{8}$	388 (400-1 $\frac{3}{8}$)	
LNAV MDA	960-1	413 (500-1)	960-1 $\frac{1}{8}$	413 (500-1 $\frac{1}{8}$)
C CIRCLING	1040-1	489 (500-1)	1280-2 729 (800-2)	1280-2 $\frac{1}{4}$ 729 (800-2 $\frac{1}{4}$)

- REIL Rwy 12 **1**
- MIRL Rwy 18-36 **1**
- HIRL Rwy 12-30 **1**

SE-4, 15 MAY 2025 to 12 JUN 2025

SE-4, 15 MAY 2025 to 12 JUN 2025