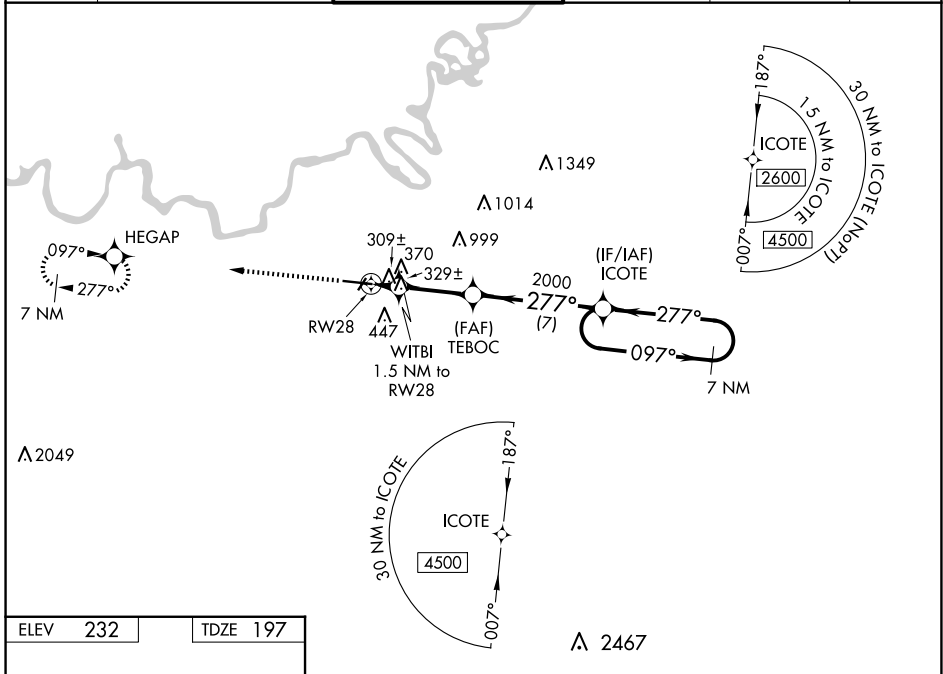


WAAS CH <b>56200</b> <b>W28A</b>	APP CRS <b>277°</b>	Rwy Idg TDZE Apt Elev	<b>9020</b> <b>197</b> <b>232</b>
--	------------------------	-----------------------------	---

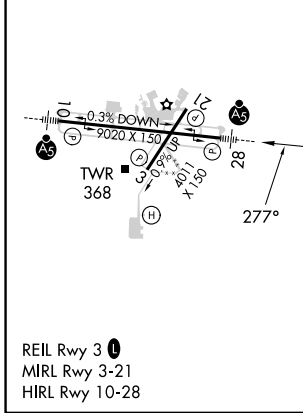
# RNAV (GPS) RWY 28

MONTGOMERY RGNL (DANNELLY FLD) (MGM)

RNP APCH-GPS.			MALSR		MISSED APPROACH: Climb to 3100 direct HEGAP and hold.	
⚠ For uncompensated Baro-VNAV systems, LNAV/VNAV NA below -8°C or above 54°C. For inop MALSR, increase LPV ⚠ Cat E visibility to ¾ mile; increase LNAV/VNAV Cat E visibility to 1 ½ mile; increase LNAV Cat E visibility to 1 ½ mile. Circling for Cat E NA north of Rwy 10-28.						
ATIS <b>120.675</b>	MONTGOMERY APP CON * <b>124.0 363.025</b>	DANNELLY TOWER * <b>119.7 (CTAF) 0 360.85</b>	GND CON <b>121.7 348.6</b>	CLNC DEL <b>118.3 270.3</b>	UNICOM <b>122.95</b>	



ELEV 232	TDZE 197
----------	----------



3100	HEGAP	VGSI and RNAV glidepath not coincident (VGSI Angle 3.00/TCH 75).		7 NM	Holding Pattern
	WITBI	TEBOC	ICOTE	097°	2600
	1.5 NM to RW28	2000		277°	
	1 NM to RW28	720	2000		
	1 NM	0.5	4 NM	7 NM	
					GP 3.00° TCH 56
CATEGORY	A	B	C	D	E
LPV DA	397-½		200 (200-½)		
LNAV/VNAV DA	606-⅞		409 (400-⅞)		
LNAV MDA	580-½ 383 (400-½)		580-⅝ 383 (400-⅝)		
CIRCLING	700-1 468 (500-1)		800-1½ 568 (600-1½)	860-2 628 (700-2)	860-2¼ 628 (700-2¼)

SE-4, 15 MAY 2025 to 12 JUN 2025

SE-4, 15 MAY 2025 to 12 JUN 2025