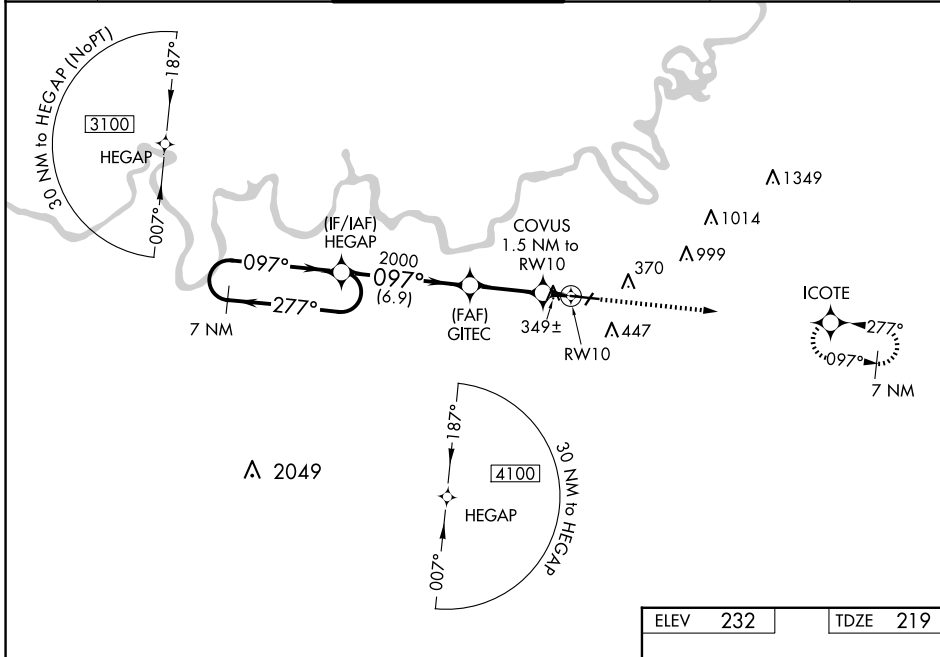


WAAS CH 50100 W10A	APP CRS 097°	Rwy Idg TDZE Apt Elev	9020 219 232
--	------------------------	-----------------------------	---

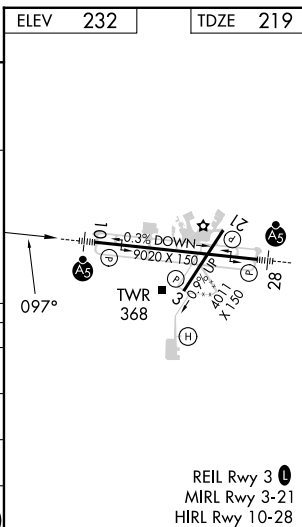
RNAV (GPS) RWY 10

MONTGOMERY RGNL (DANNELLY FLD) (MGM)

RNP APCH-GPS.		<p>▼ For uncompensated Baro-VNAV systems, LNAV/VNAV NA below -8°C or above 54°C. For inop MALS, increase LPV Cat E visibility to RVR 4000; increase LNAV/VNAV Cat E visibility to RVR 5000; increase LNAV Cats C/D/E visibility to 1½ mile. Circling for Cat E NA north of Rwy 10-28. **RVR 1800 authorized with use of FD or AP or HUD to DA.</p>		<p>MALS</p> <p>MISSED APPROACH: Climb to 2600 direct ICOTE and hold.</p>	
ATIS 120.675	MONTGOMERY APP CON * 124.0 363.025	DANNELLY TOWER * 119.7 (CTAF) 360.85	GND CON 121.7 348.6	CLNC DEL 118.3 270.3	UNICOM 122.95



VGSI and RNAV glidepath not coincident (VGSI Angle 3.00/TCH 64).						2600	ICOTE
7 NM Holding Pattern HEGAP 3100 ← 277° / 097° → GP 3.00° TCH 50						↑	✦
GITEC 2000 6.9 NM						2000	
COVUS 1.5 NM to RWY 10 740 3.9 NM						740	
RWY 10 1 NM to RWY 10 0.5 NM							
CATEGORY	A	B	C	D	E		
LPV DA **	419/24		200 (200-½)				
LNAV/VNAV DA	530/24		311 (300-½)				
LNAV MDA	600/24	381 (400-½)		600/35		381 (400-¾)	
CIRCLING	700-1	468 (500-1)		800-1½ 568 (600-1½)	860-2 628 (700-2)	860-2¼ 628 (700-2¼)	



REIL Rwy 3
MIRL Rwy 3-21
HIRL Rwy 10-28

SE-4, 15 MAY 2025 to 12 JUN 2025

SE-4, 15 MAY 2025 to 12 JUN 2025