

VOR/DME PDK 116.6 Chan 113	APP CRS 072°	Rwy Idg 6000 THRE 1061 Apt Elev 1062
--	------------------------	--

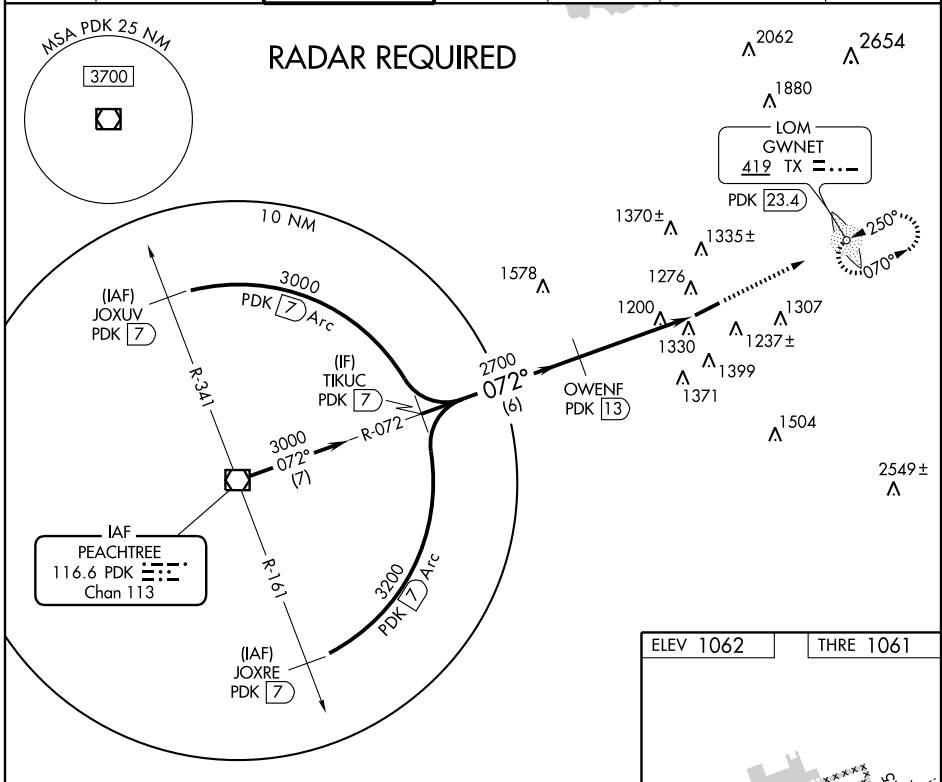
LAWRENCEVILLE/GWINNETT COUNTY-BRISCOE FIELD (LZU)

VOR/DME RWY 7

▼ When VGSI inop, Straight-in/Circling to Rwy 7 NA at night.
▲ Visibility reduction by helicopters NA. When local altimeter setting not received, use Winder altimeter setting and increase all MDA 60 feet. Increase S-7 and Circling Cat C visibility 1/8 mile, and Circling Cat D 1/4 mile.

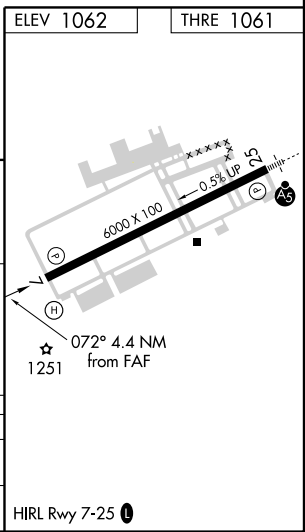
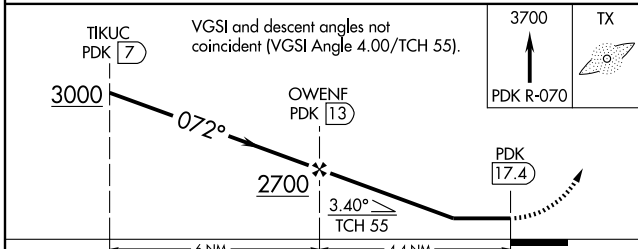
MISSED APPROACH: Climb to 3700 on PDK VOR/DME R-070 to GWNEN/PDK 23.4 DME and hold, continue climb-in-hold to 3700.

ATIS 132.275	ATLANTA APP CON 126.975 239.275	GWINNETT TOWER * 124.1 (CTAF) 0	GND CON 121.8	CLNC DEL 121.8	ATLANTA CLNC DEL 134.0 (When tower closed)	UNICOM 123.05
------------------------	---	---	-------------------------	--------------------------	---	-------------------------



SE-4, 03 MAY 2012 to 31 MAY 2012

SE-4, 03 MAY 2012 to 31 MAY 2012



CATEGORY	A	B	C	D
S-7	1660-1	599 (600-1)	1660-1¾	599 (600-1¾)
CIRCLING	1660-1	598 (600-1)	1660-1¾ 598 (600-1¾)	1700-2 638 (700-2)

VOR/DME RWY 7