


| | | |
|--|------------------------|--|
| WAAS CH 82606 W36A | APP CRS 005° | Rwy Idg 12600 TDZE 616 Apt Elev 629 |
|--|------------------------|--|

RNAV (GPS) RWY 36L

HUNTSVILLE INTL-CARL T JONES FLD (HSV)

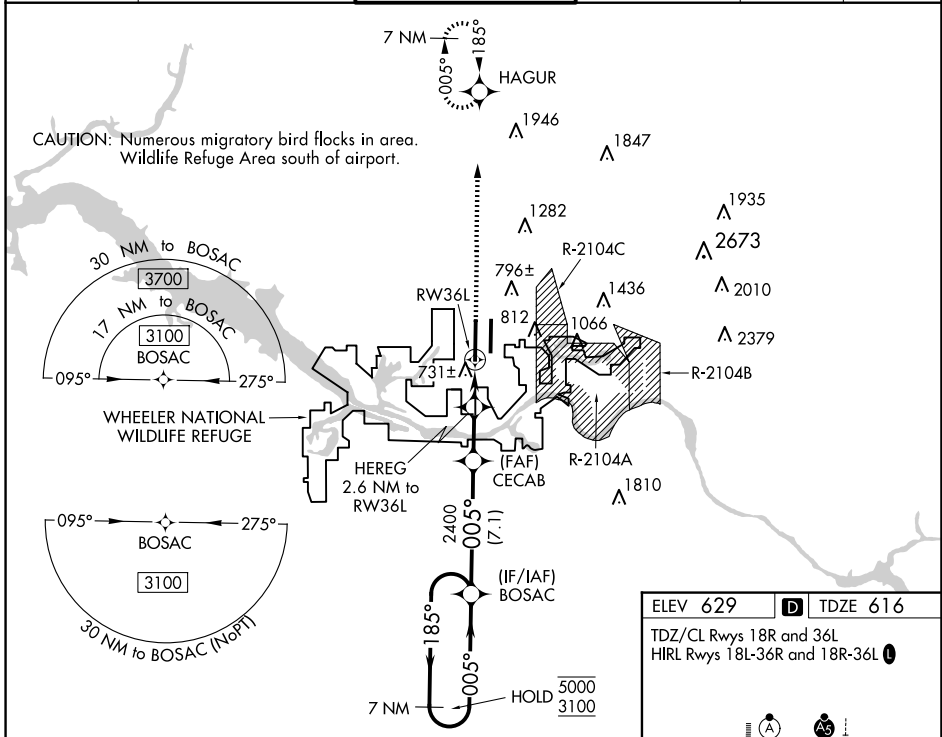
RNP APCH-GPS.

ASR Circling NA for Cats C/D/E east of Rwy 18L-36R. Simultaneous approach authorized. LNAV procedure NA during simultaneous operations. Use of FD or AP required during simultaneous operations. For uncompensated Baro-VNAV systems, LNAV/VNAV NA below -8°C or above 54°C. For inop ALS, increase LPV Cat E visibility to RVR 4000, LNAV/VNAV all Cats visibility to RVR 4500, and LNAV Cat E visibility to RVR 6000.

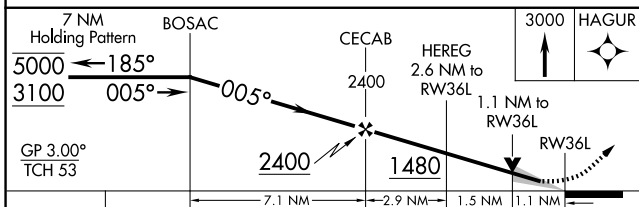
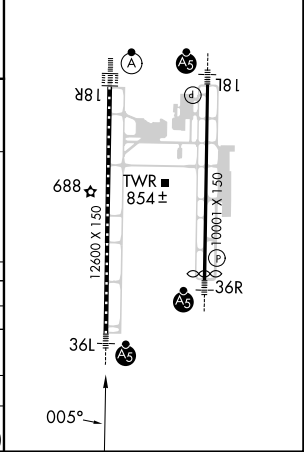
MALSR 

MISSED APPROACH: Climb to 3000 direct HAGUR and hold.

| | | | | | |
|-----------------------|--|--|---------------------------------|---------------------------|-------------------------|
| ATIS 121.25 | HUNTSVILLE APP CON * 125.6 354.1 | HUNTSVILLE TOWER * 127.6 (CTAF) 350.35 | GND CON 121.9 269.525 | CLNC DEL 120.35 | UNICOM 122.95 |
|-----------------------|--|--|---------------------------------|---------------------------|-------------------------|



| | |
|-------------------------------|-------------------|
| ELEV 629 | D TDZE 616 |
| TDZ/CL Rwys 18R and 36L | |
| HIRL Rwys 18L-36R and 18R-36L | |



| CATEGORY | A | B | C | D | E |
|-------------------|---------|-------------|-------------------------|-----------------------|-------------------------|
| LPV DA | | 816/18 | 200 (200-½) | | |
| LNAV/VNAV DA | | 892/24 | 276 (300-½) | | |
| LNAV MDA | 1000/24 | 384 (400-½) | 1000/35 | 384 (400-¾) | |
| C CIRCLING | 1160-1 | 531 (600-1) | 1160-1½ 531 (600-1½) | 1240-2 611 (700-2) | 1260-2¼ 631 (700-2¼) |

SE-4, 15 MAY 2025 to 12 JUN 2025

SE-4, 15 MAY 2025 to 12 JUN 2025