

LOC/DME I-JJC 109.55 Chan 32 (Y)	APP CRS 005°	Rwy Idg 9801 TDZE 595 Apt Elev 629
--	------------------------	---

ILS or LOC RWY 36R

HUNTSVILLE INTL-CARL T JONES FLD (HSV)

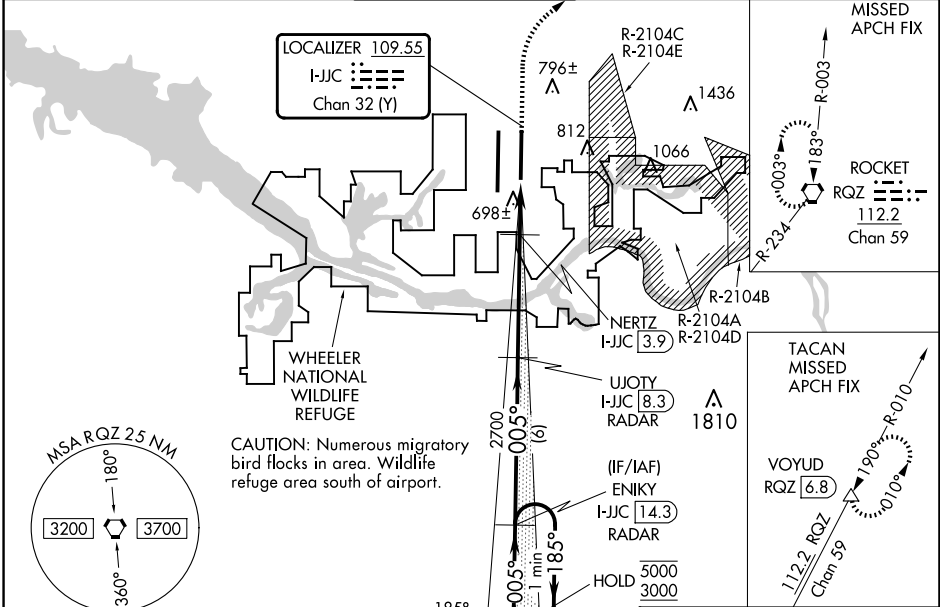
RADAR required for procedure entry. DME or RADAR required.

ASR Simultaneous approach authorized. For inop ALS, increase S-ILS 36R Cat E visibility to RVR 4000 and S-LOC 36R Cat C/D/E visibility to 1½ SM; NERTZ Fix minimums: increase S-LOC 36R Cat E visibility to RVR 6000. Circling NA for Cat C/D/E east of Rwy 18L-36R.

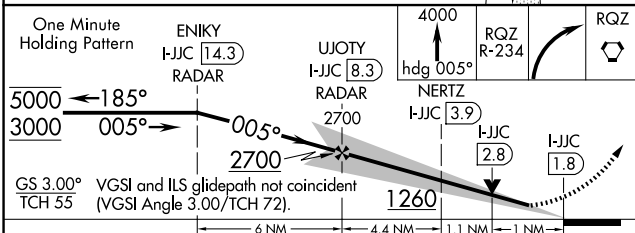


MISSED APPROACH: Climb to 4000 on heading 005° to intercept RQZ R-234 and right turn to RQZ VORTAC and hold, continue climb-in-hold to 4000. (TACAN aircraft continue climb to 5000 on RQZ VORTAC R-010 to VOYUD/RQZ 6.8 DME and hold north, left turn, 190° inbound, continue climb-in-hold to 5000).

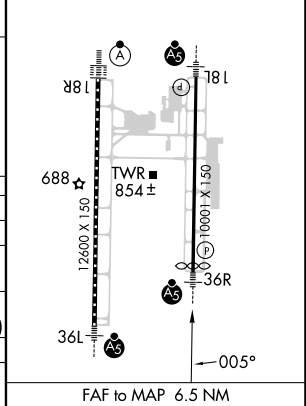
ATIS 121.25	HUNTSVILLE APP CON ★ 125.6 354.1	HUNTSVILLE TOWER ★ 127.6 (CTAF) 350.35	GND CON 121.9 269.525	CLNC DEL 120.35	UNICOM 122.95
-----------------------	--	--	---------------------------------	---------------------------	-------------------------



ELEV 629 TDZE 595



TDZ/CL Rws 18R and 36L
HIRL Rws 18L-36R and 18R-36L



CATEGORY	A	B	C	D	E	
S-ILS 36R	818/24 223 (200-½)					
S-LOC 36R	1260/24	665 (700-½)	1260-1½		665 (700-1½)	
C CIRCLING	1260-1	631 (700-1)	1260-1⅞	1260-2	1260-2¼	
NERTZ FIX MINIMUMS						
S-LOC 36R	980/24	385 (400-½)	980/35		385 (400-⅝)	
C CIRCLING	1160-1	531 (600-1)	1160-1½	1240-2	1260-2¼	
FAF to MAP 6.5 NM						
Knots		60	90	120	150	180
Min:Sec		6:30	4:20	3:15	2:36	2:10