

VORTAC OKW 111.0 Chan 47	APP CRS 076°	Rwy Idg TDZE Apt Elev	6007 700 700
---------------------------------------	------------------------	-----------------------------	---

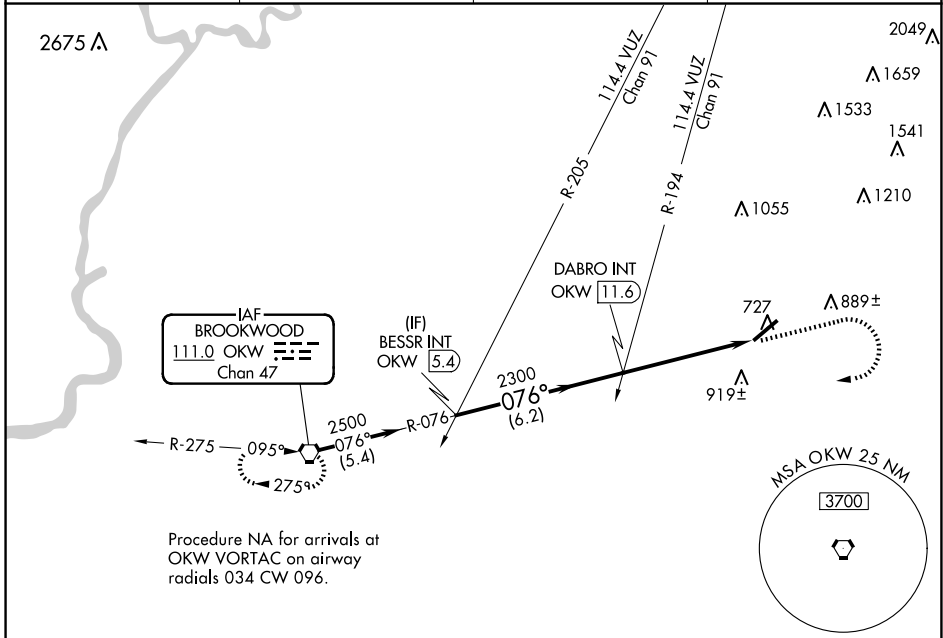
VOR RWY 5

BESSEMER (EKY)

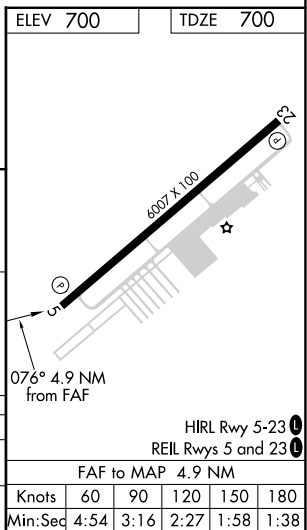
NA Inoperative table does not apply. When local altimeter setting not received, use Alabaster altimeter setting and increase all MDAs 60 feet; increase S-5 Cat C visibility $\frac{1}{8}$ SM and Circling Cat D visibility $\frac{1}{4}$ SM.

MISSED APPROACH: Climb to 1500 then climbing right turn to 3000 direct OKW VORTAC and hold.

AWOS-3PT 118.825	BIRMINGHAM APP CON 124.9 351.85	CLNC DEL 123.75	UNICOM 123.0 (CTAF)
----------------------------	---	---------------------------	-------------------------------



Procedure NA for arrivals at OKW VORTAC on airway radials 034 CW 096.



SE-4, 15 MAY 2025 to 12 JUN 2025

SE-4, 15 MAY 2025 to 12 JUN 2025