


LOC IDHN	APP CRS	Rwy Idg	8496
108.3	318°	TDZE	382
		Apt Elev	401

# ILS or LOC RWY 32

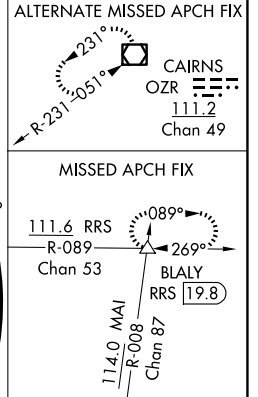
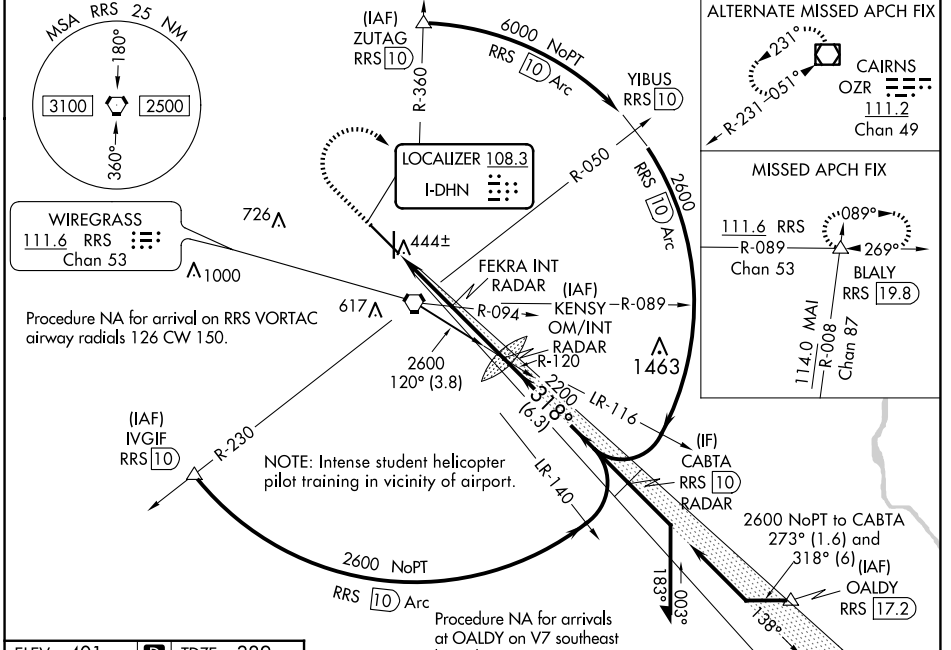
DOTHAN RGNL (DHN)

**▲** For inop ALS, increase S-ILS 32 Cat E visibility to RVR 4000, S-LOC 32 Cat C/D/E visibility to 2½ SM, and S-LOC 32 FEKRA fix minimums Cat C/D/E visibility to RVR 5000.  
**\*\*** RVR 1800 authorized with use of FD or AP or HUD to DA.

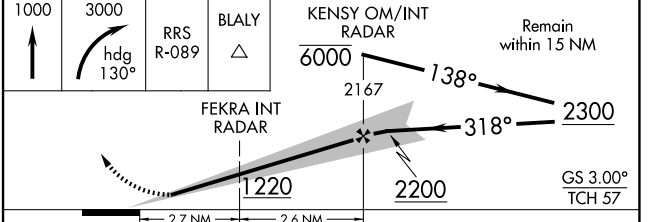
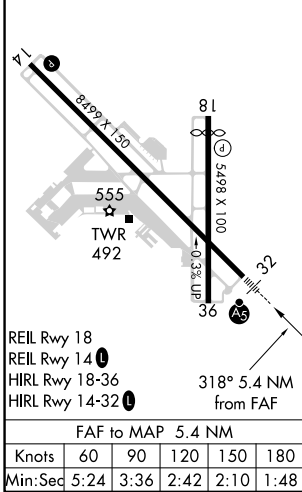
**MALSR** 

**MISSED APPROACH:** Climb to 1000 then climbing right turn to 3000 on hdg 130° and on RRS VORTAC R-089 to BLALY INT/RRS VORTAC 19.8 DME and hold.

ATIS	CAIRNS APP CON*	DOTHAN TOWER *	GND CON	UNICOM
135.725	125.4 327.125	118.4 (CTAF) 257.6	121.7 348.6	122.95



ELEV	401	TDZE	382
------	-----	------	-----



CATEGORY	A	B	C	D	E
S-ILS 32 **	582/24 200 (200-½)				
S-LOC 32	1220/24 838 (900-½)	1220/40 838 (900-¾)	1220-1⅞ 838 (900-1⅞)		
<b>C</b> CIRCLING	1220-1¼	819 (900-1¼)	1220-2½ 819 (900-2½)	1220-2¾ 819 (900-2¾)	1220-3 819 (900-3)
FEKRA FIX MINIMUMS (DUAL VOR RECEIVERS OR RADAR REQUIRED)					
S-LOC 32	720/24 338 (400-½)		720/26 338 (400-½)		
<b>C</b> CIRCLING	860-1 459 (500-1)		920-1½ 519 (600-1½)	1040-2 639 (700-2)	1040-2½ 639 (700-2½)

SE-4, 15 MAY 2025 to 12 JUN 2025

SE-4, 15 MAY 2025 to 12 JUN 2025