

WAAS CH 56209 W01A	APP CRS 004°	Rwy Idg TDZE 140 Apt Elev 141	5992
--	------------------------	---	-------------

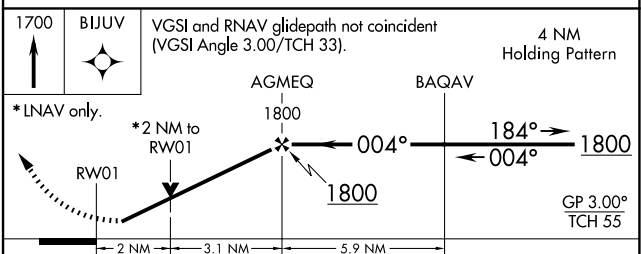
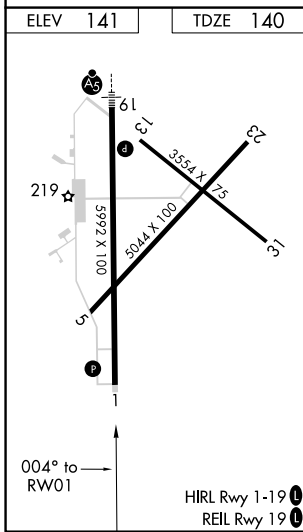
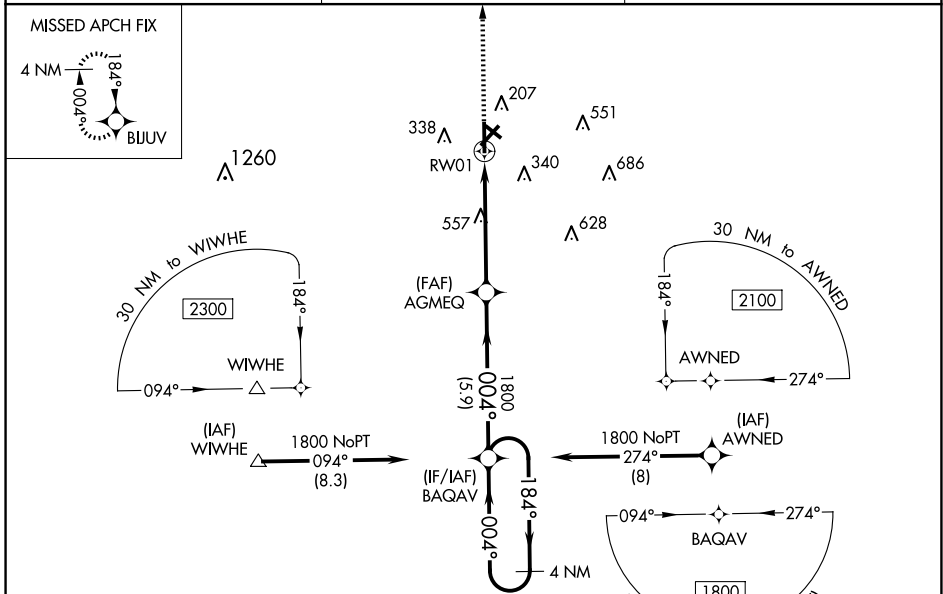
RNAV (GPS) RWY 1

WAYCROSS-WARE COUNTY (A.Y.S)

⚠ DME/DME RNP-0.3 NA. When local altimeter setting not received, use Alma altimeter setting and increase LPV DA to 473 feet and all visibilities $\frac{1}{8}$ mile, LNAV/VNAV DA to 462 feet and all visibilities $\frac{1}{8}$ mile; increase all MDA 60 feet and visibility Cats C and D $\frac{1}{8}$ mile and Circling Cats C and D visibilities $\frac{1}{4}$ mile. For uncompensated Baro-VNAV systems, LNAV/VNAV NA below -15°C (5°F) or above 54°C (130°F). Night Landing Rwy 5, 31 NA. VDP and Baro-VNAV NA when using Alma altimeter setting. Helicopter visibility reduction below $\frac{3}{4}$ SM NA.

MISSED APPROACH:
Climb to 1700 direct BIJUV and hold.

AWOS-3 118.575	JACKSONVILLE CENTER 127.575 269.025	UNICOM 122.8 (CTAF) 0
--------------------------	---	---------------------------------



CATEGORY	A	B	C	D
LPV DA		423- $\frac{7}{8}$	283 (300- $\frac{7}{8}$)	
LNAV/VNAV DA		412- $\frac{7}{8}$	272 (300- $\frac{7}{8}$)	
LNAV MDA	820-1	680 (700-1)	820-1 $\frac{7}{8}$	680 (700-1 $\frac{7}{8}$)
CIRCLING	820-1	679 (700-1)	860-2 719 (800-2)	860-2 $\frac{1}{4}$ 719 (800-2 $\frac{1}{4}$)

SE-4, 15 MAY 2025 to 12 JUN 2025

SE-4, 15 MAY 2025 to 12 JUN 2025