

WAAS CH <b>78029</b> <b>W18A</b>	APP CRS <b>185°</b>	Rwy Idg TDZE <b>777</b> Apt Elev <b>777</b>	<b>5264</b>
--	------------------------	---	-------------

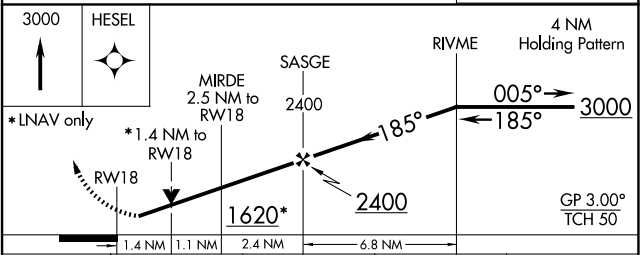
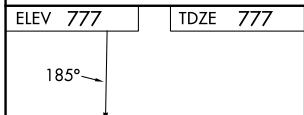
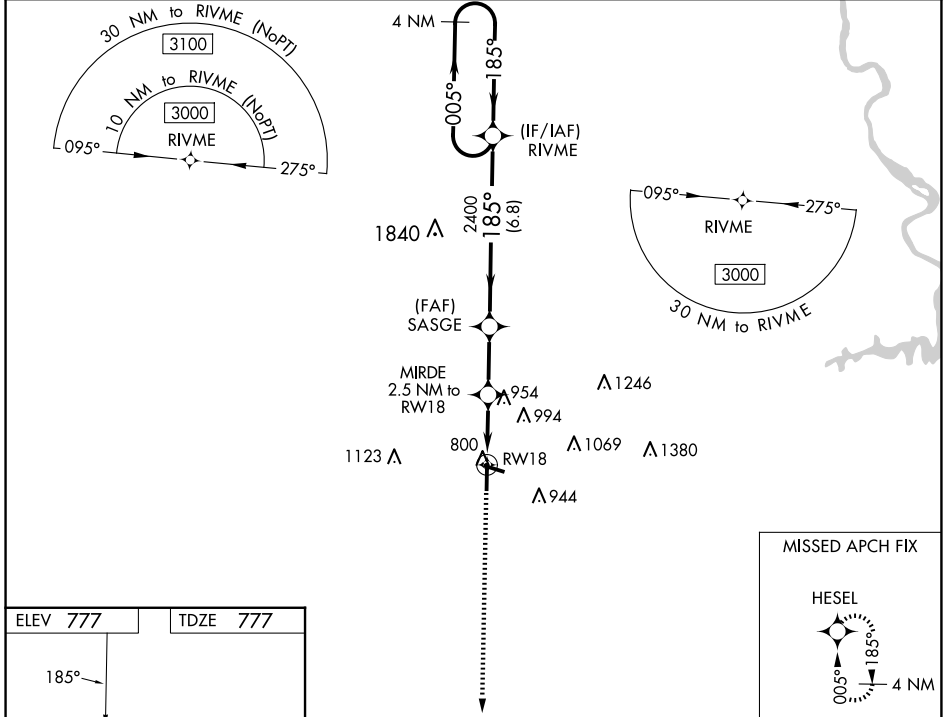
# RNAV (GPS) RWY 18

AUBURN UNIVERSITY RGNL (AUO)

▼ For uncompensated Baro-VNAV systems, LNAV/VNAV NA below -16°C (4°F) or above 54°C (130°F).  
 ▲ Baro-VNAV and VDP NA when using Columbus altimeter setting. DME/DME RNP-0.3 NA. Rwy 18 helicopter visibility reduction below 3/4 SM not authorized. When local altimeter setting not received, use Columbus altimeter setting: increase LPV DA to 1140 feet and visibility all Cats 1/2 SM; increase LNAV/VNAV DA to 1164 feet and visibility all Cats 3/8 SM; increase all MDA 120 feet and LNAV Cats C/D visibility 3/8 SM, Circling Cat C visibility 1/4 SM, and circling Cat D visibility 1/2 SM.

MISSED APPROACH: Climb to 3000 direct HESEL and hold.

AWOS-3PT <b>132.575</b>	ATLANTA APP CON * <b>125.5 323.1</b>	AUBURN TOWER * <b>123.875</b>	GND CON <b>121.625</b>	CLNC DEL <b>118.7</b> (When twr closed)	UNICOM <b>123.0</b> (CTAF) <b>0</b>
----------------------------	---	----------------------------------	---------------------------	---	--



CATEGORY	A	B	C	D
LPV DA	1027-3/4 250 (300-3/4)			
LNAV/VNAV DA	1051-7/8 274 (300-7/8)			
LNAV MDA	1260-1	483 (500-1)	1260-1 3/8	483 (500-1 3/8)
<b>C</b> CIRCLING	1280-1 503 (600-1)	1360-1 583 (600-1)	1380-1 3/4 603 (700-1 3/4)	1480-2 1/4 703 (800-2 1/4)

SE-4, 15 MAY 2025 to 12 JUN 2025

SE-4, 15 MAY 2025 to 12 JUN 2025