


WAAS CH <b>97400</b> <b>W09B</b>	APP CRS <b>095°</b>	Rwy Idg TDZE <b>1026</b> Apt Elev <b>1026</b>	<b>9000</b>
--	------------------------	---	-------------

# RNAV (GPS) RWY 9R

HARTSFIELD/JACKSON ATLANTA INTL (ATL)

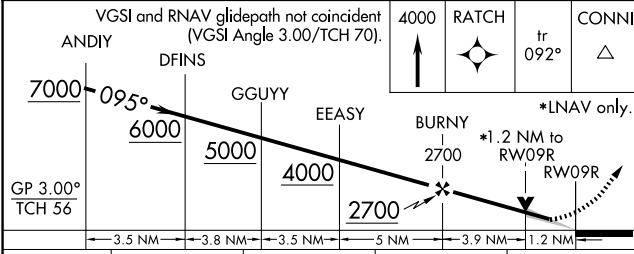
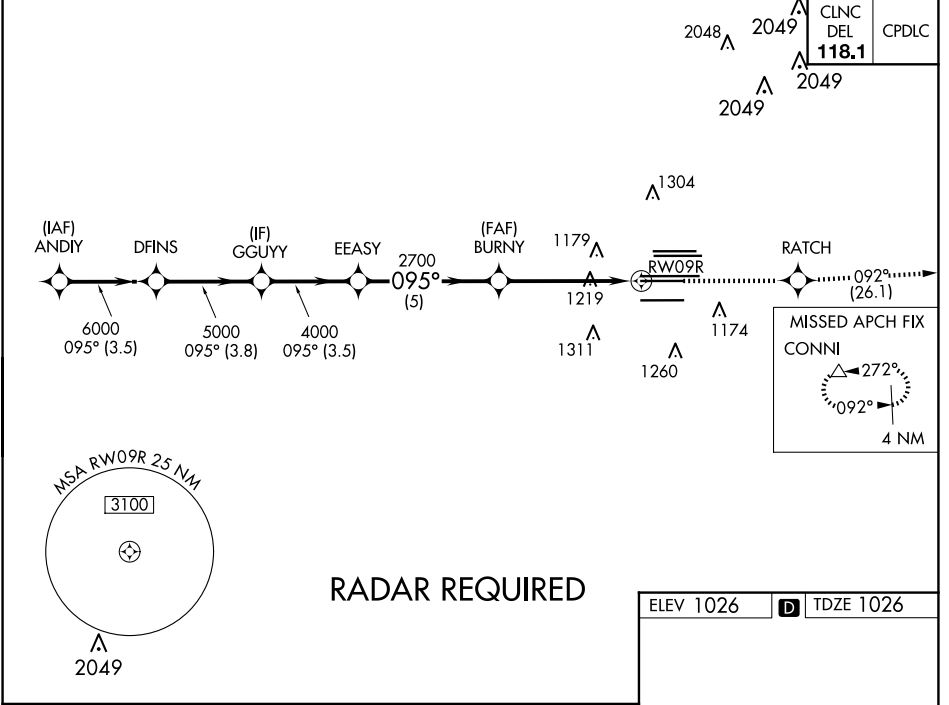
**▽** For uncompensated Baro-VNAV systems, LNAV/VNAV NA below -7°C (20°F) or above 54°C (130°F). DME/DME RNP-0.3 NA. Simultaneous approach authorized with Rwy 8L or 8R. LNAV procedure NA during simultaneous operations. Use of FD or AP providing RNAV track guidance required during simultaneous operations.

**ALSIF-2**

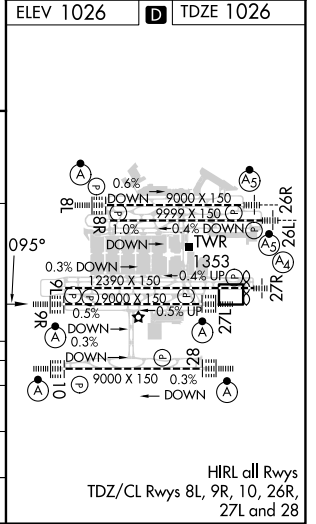
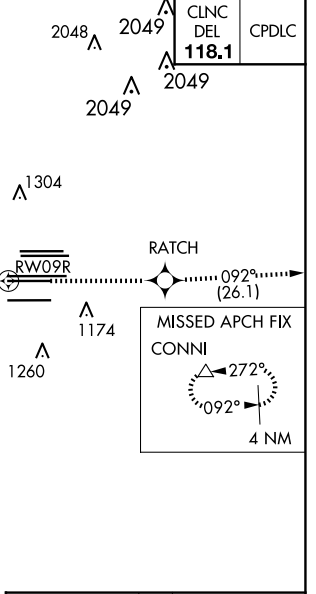


**MISSED APPROACH:** Climb to 4000 direct RATCH and on track 092° to CONNI and hold.

D-ATIS ARR <b>119.65</b>	ATLANTA APP CON	ATLANTA TOWER					ALL RWYS	GND CON	ALL RWYS
DEP <b>125.55</b>	<b>127.9 379.9</b>	<b>119.1</b>	<b>125.325</b>	<b>123.85</b>	<b>119.3</b>	<b>119.5</b>	<b>254.4</b>	<b>121.9</b>	<b>121.75 121.65 254.4</b>



CATEGORY	A	B	C	D
LPV DA		1226/18	200 (200-½)	
LNAV/VNAV DA		1403/40	377 (500-¾)	
LNAV MDA	1480/24	454 (500-½)	1480/45	454 (500-¾)



SE-4, 15 MAY 2025 to 12 JUN 2025

SE-4, 15 MAY 2025 to 12 JUN 2025