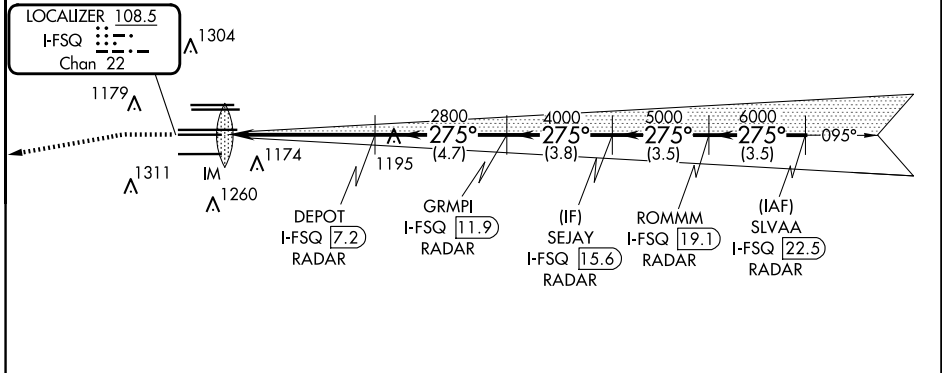
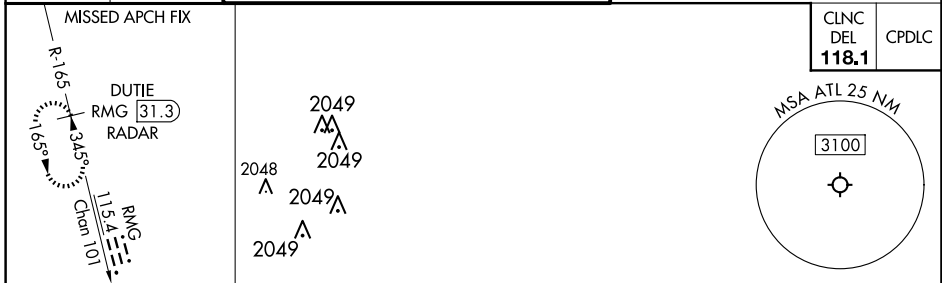


LOC/DME I-FSQ 108.5 Chan 22	APP CRS 275°	Rwy ldg TDZE Apt Elev	8865 999 1026
--	------------------------	-----------------------------	--

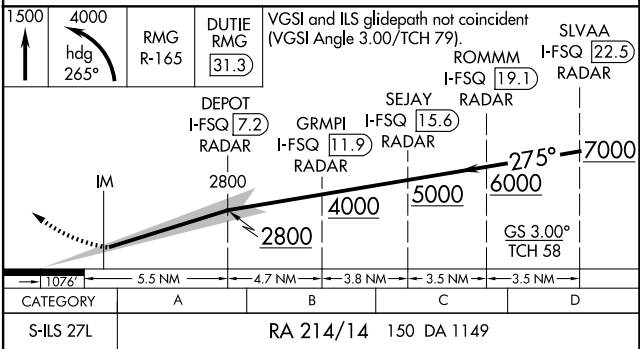
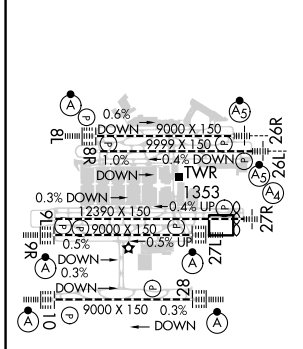
ILS RWY 27L (SA CAT I)
HARTSFIELD/JACKSON ATLANTA INTL (ATL)

DME or RADAR required. RADAR required for procedure entry.		ALSF-2	MISSED APPROACH: Climb to 1500 then climbing left turn to 4000 on heading 265° and RMG VORTAC R-165 to DUTIE/RMG 31.3 DME/RADAR and hold.
Simultaneous approach authorized. Requires specific OPSPEC, MSPEC, or LOA approval.			

D-ATIS ARR 119.65	ATLANTA APP CON DEP 125.55	ATLANTA TOWER 8L-26R 8R-26L 9L-27R 9R-27L 10-28 RWYs 119.1 125.325 123.85 119.3 119.5 254.4	ALL RWYs 121.9	GND CON ALL RWYs 121.75 121.65 254.4
-----------------------------	---	--	-----------------------------	---



ELEV 1026	D	TDZE 999
-----------	----------	----------



SA CATEGORY I ILS- SPECIAL AIRCREW & AIRCRAFT CERTIFICATION REQUIRED

SE-4, 15 MAY 2025 to 12 JUN 2025

SE-4, 15 MAY 2025 to 12 JUN 2025