

LOC/DME I-FUN 108.9 Chan 26	APP CRS 095°	Rwy Idg TDZE Apt Elev 9000 1026 1026
---	------------------------	--

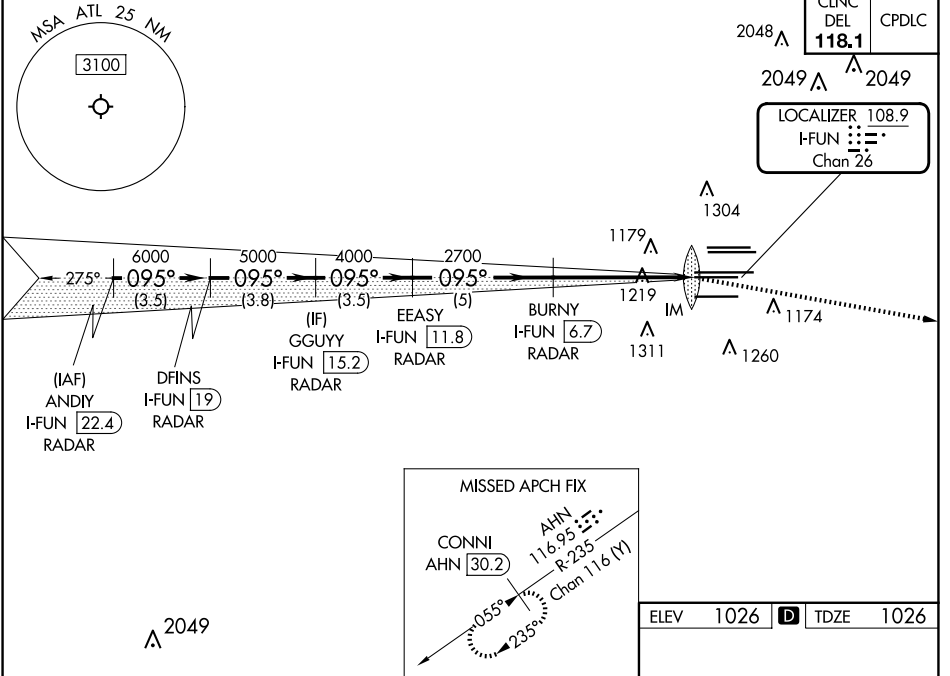
ILS RWY 9R (SA CAT I)
HARTSFIELD/JACKSON ATLANTA INTL (ATL)

RADAR required for procedure entry, DME.
Simultaneous approach authorized.
Requires specific OPSPEC, MSPEC, or LOA approval.

ALSF-2

MISSED APPROACH: Climb to 4000 on heading 100°
and AHN VOR/DME R-235 to CONNI/AHN 30.2 DME
and hold.

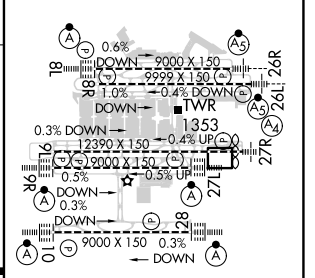
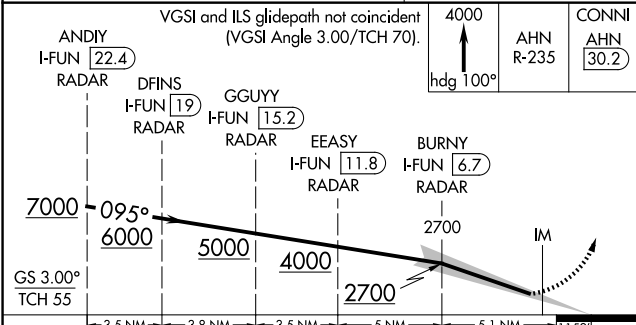
D-ATIS	ATLANTA	ATLANTA TOWER								GND CON	ALL	
ARR	APP CON	8L-26R	8R-26L	9L-27R	9R-27L	10-28	RWYS	(8L-26R,8R-26L)	(9L-27R,9R-27L)	10-28	ALL	
DEP 119.65	127.9	379.9	119.1	125.325	123.85	119.3	119.5	254.4	121.9	121.75	121.65	254.4



SE-4, 15 MAY 2025 to 12 JUN 2025

SE-4, 15 MAY 2025 to 12 JUN 2025

ELEV	1026	D	TDZE	1026
------	------	---	------	------



CATEGORY	A	B	C	D
S-ILS 9R	RA 196/14 150 DA 1176			
SA CATEGORY I ILS - SPECIAL AIRCREW & AIRCRAFT CERTIFICATION REQUIRED				

HIRL all Rwys
TDZ/CL Rwys 8L,
9R, 10, 26R, 27L and 28