

| | | |
|---|------------------------|---|
| LOC/DME I-PKU 111.75 Chan 54(Y) | APP CRS 275° | Rwy ldg TDZE Apt Elev 9000 998 1026 |
|---|------------------------|---|

ILS or LOC RWY 28

HARTSFIELD/JACKSON ATLANTA INTL (ATL)

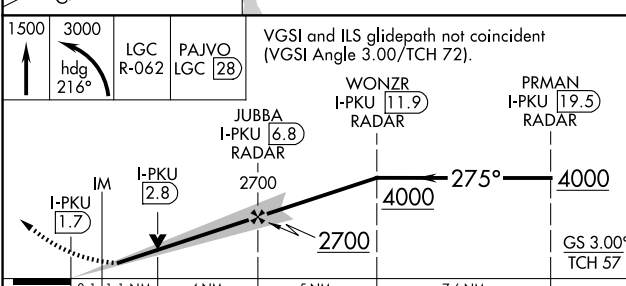
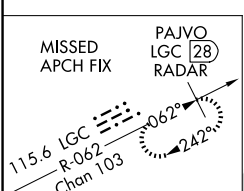
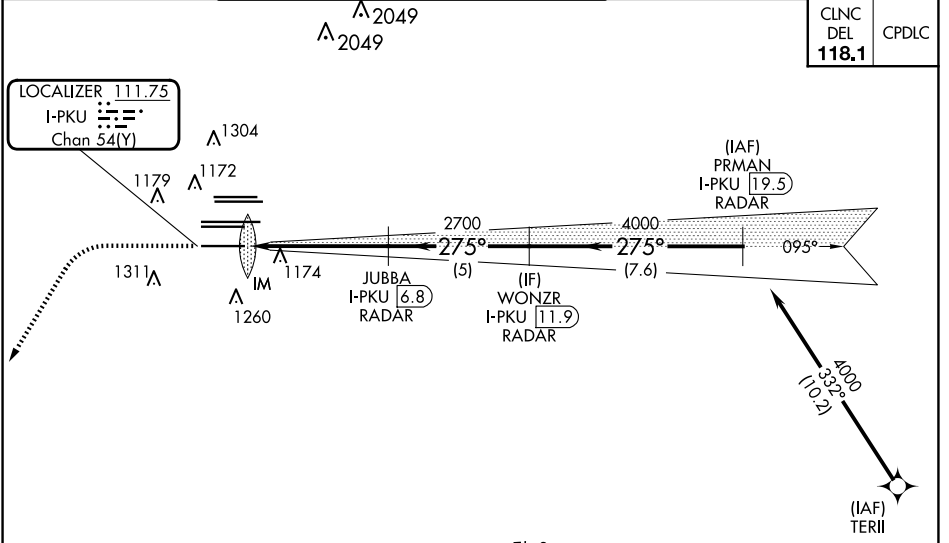
RNAV 1-GPS or RADAR required for procedure entry.
From TERII: RNAV 1-GPS required. DME or RADAR required.

ALSF-2

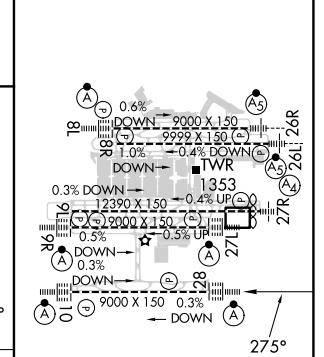
MISSED APPROACH: Climb to 1500 then climbing left turn to 3000 on heading 216° and LGC VORTAC R-062 to PAJVO/LGC 28 DME/RADAR and hold.

Simultaneous approach authorized.

| | | | | | |
|-----------------------------|---|--|-----------------------------|--|-------------|
| D-ATIS ARR 119.65 | ATLANTA APP CON DEP 125.55 | ATLANTA TOWER 8L-26R 8R-26L 9L-27R 9R-27L 10-28 RWYS 119.1 125.325 123.85 119.3 119.5 254.4 | ALL RWYS 121.9 | GND CON 9L-27R, 9R-27L 10-28 RWYS 121.75 121.65 254.4 | ALL RWYS |
|-----------------------------|---|--|-----------------------------|--|-------------|



| | |
|-----------|----------|
| ELEV 1026 | TDZE 998 |
|-----------|----------|



| | | | | |
|----------|---------|---------------|---------------|---------------|
| CATEGORY | A | B | C | D |
| S-ILS 28 | 1198/18 | | 200 (200-1/2) | |
| S-LOC 28 | 1440/24 | 442 (500-1/2) | 1440/45 | 442 (500-7/8) |

| | | | | | |
|---|------|------|------|------|------|
| HIRL all Rwys | | | | | |
| TDZ/CL Rwys 8L, 9R, 10, 26R, 27L and 28 | | | | | |
| FAF to MAP 5.2 NM | | | | | |
| Knots | 60 | 90 | 120 | 150 | 180 |
| Min:Sec | 5:12 | 3:28 | 2:36 | 2:05 | 1:44 |

SE-4, 15 MAY 2025 to 12 JUN 2025

SE-4, 15 MAY 2025 to 12 JUN 2025