

ATLANTA, GEORGIA

AL-26 (FAA)

25051

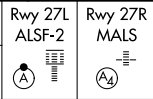
LOC/DME I-FSQ 108.5 Chan 22	APP CRS 275°	Rwy Idg 27L 8865 27R 11890 TDZE 999 985 Apt Elev 1026 1026
--	------------------------	--

ILS or LOC RWY 27L

HARTSFIELD/JACKSON ATLANTA INTL (ATL)

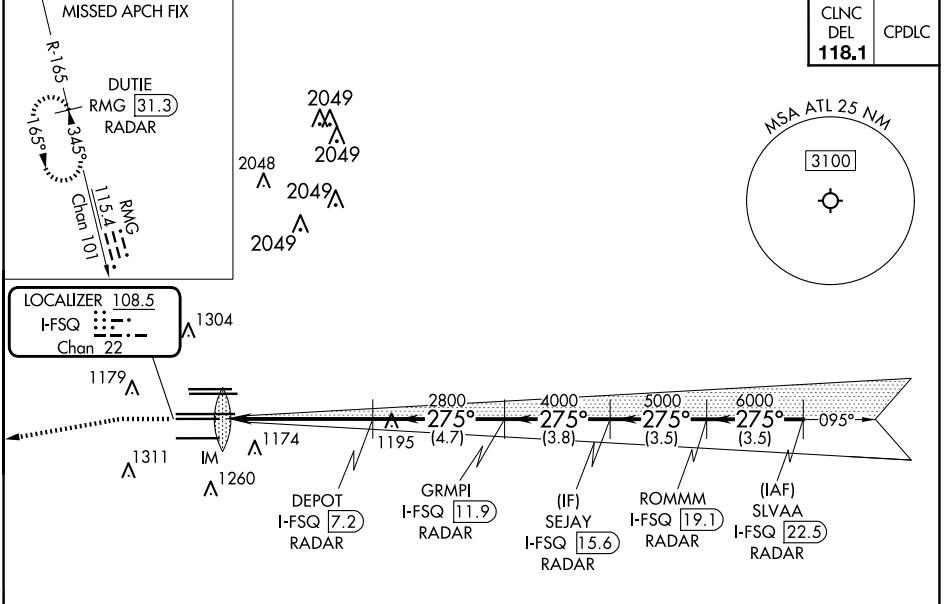
DME or RADAR required.
RADAR required for procedure entry.

⚠ Simultaneous approach authorized.
⚠ Inop table does not apply to Sidestep Rwy 27R.

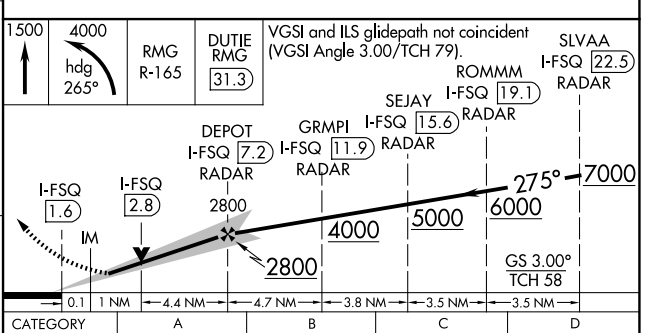
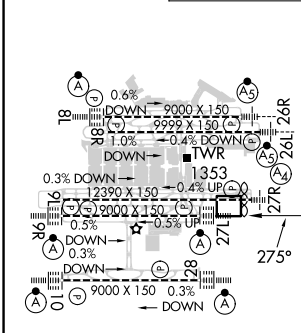


MISSED APPROACH: Climb to 1500 then climbing left turn to 4000 on heading 265° and RMG VORTAC R-165 to DUTIE/RMG 31.3 DME/RADAR and hold.

D-ATIS ARR 119.65	ATLANTA APP CON DEP 127.9 379.9	ATLANTA TOWER 8L-26R 119.1 8R-26L 125.325 9L-27R 123.85 9R-27L 119.3 10-28 RWYS 119.5 254.4	ALL RWYS 121.9	GND CON 10-28 RWYS 121.75	ALL RWYS 121.65 254.4
-----------------------------	---	---	--------------------------	-------------------------------------	---------------------------------



ELEV 1026	D	TDZE 27L 999 TDZE 27R 985
-----------	----------	------------------------------



HIRL all Rwy 27L
TDZ/CL Rwy 8L, 9R, 10, 26R, 27L and 28

FAF to MAP 5.5 NM

Knots	60	90	120	150	180
Min:Sec	5:30	3:40	2:45	2:12	1:50

CATEGORY	A	B	C	D
S-ILS 27L	1199/18 200 (200-½)			
S-LOC 27L	1420/24	421 (400-½)	1420/40	421 (400-¾)
SIDESTEP 27R	1420-1½	435 (400-1½)	1420-2¼	435 (400-2¼)

ATLANTA, GEORGIA
Amdt 19 22APR21

33°38'N-84°26'W

HARTSFIELD/JACKSON ATLANTA INTL (ATL)

ILS or LOC RWY 27L

SE-4, 15 MAY 2025 to 12 JUN 2025

SE-4, 15 MAY 2025 to 12 JUN 2025