

ATHENS, GEORGIA

AL-983 (FAA)

24305

VOR/DME AHN <b>116.95</b> Chan <b>116</b> (Y)	APP CRS <b>014°</b>	Rwy ldg <b>3995</b> TDZE <b>805</b> Apt Elev <b>813</b>
---	------------------------	---

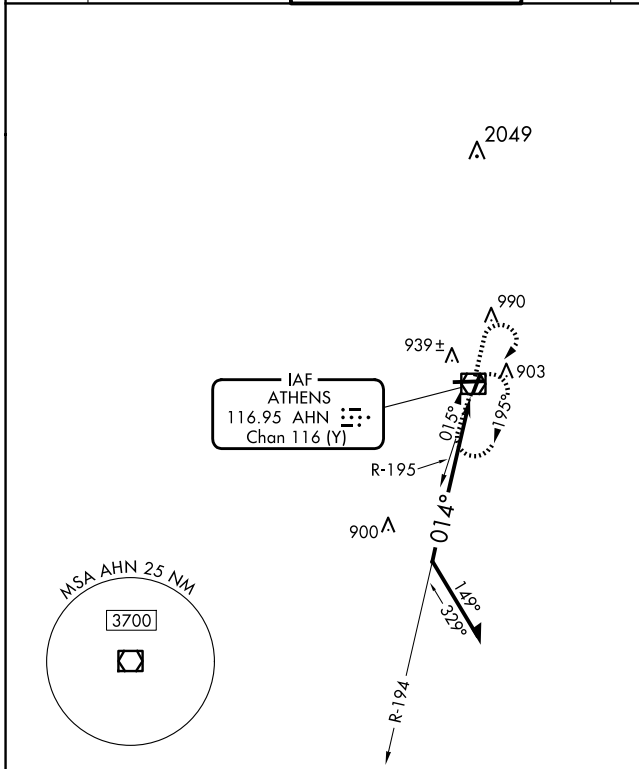
# VOR RWY 2

ATHENS/BEN EPPS (AHN)

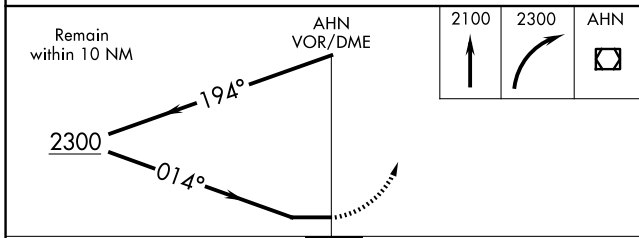
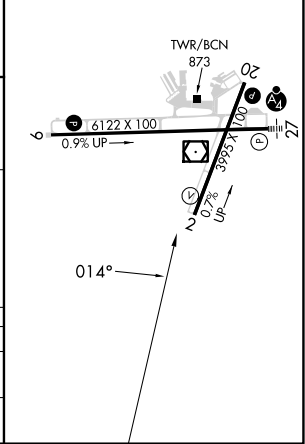
**▼** When VGSi inop, Circling Rwy 20 NA at night. When VGSi inop, Straight-in/Circling Rwy 2 procedure NA at night. Visibility reduction by helicopters NA. When local altimeter setting not received, use Winder altimeter setting and increase all MDA 60 feet; increase S-2 Cat D and Circling Cat D visibilities ¼ SM.

**MISSED APPROACH:** Climb to 2100 then climbing right turn to 2300 direct AHN VOR/DME and hold.

ASOS <b>132.875</b>	ATLANTA APP CON * <b>132.475 291.1</b>	ATHENS TOWER * <b>126.3</b> (CTAF) <b>0 338.275</b>	GND CON <b>121.8</b>	CLNC DEL <b>121.8</b>	CLNC DEL <b>132.475 291.1</b> (when twr closed)	UNICOM <b>122.95</b>
------------------------	---	--	-------------------------	--------------------------	---	-------------------------



ELEV 813	TDZE 805
MIRL Rwy 2-20	HIRL Rwys 9-27



CATEGORY	A	B	C	D
S-2	1220-1	415 (500-1)	1220-1¼	415 (500-1¼)
<b>C</b> CIRCLING	1260-1 447 (500-1)	1280-1 467 (500-1)	1320-1½ 507 (600-1½)	1460-2 647 (700-2)

ATHENS, GEORGIA  
Amdt 11D 27FEB20

33°57'N-83°20'W

ATHENS/BEN EPPS (AHN)  
**VOR RWY 2**

SE-4, 15 MAY 2025 to 12 JUN 2025

SE-4, 15 MAY 2025 to 12 JUN 2025