

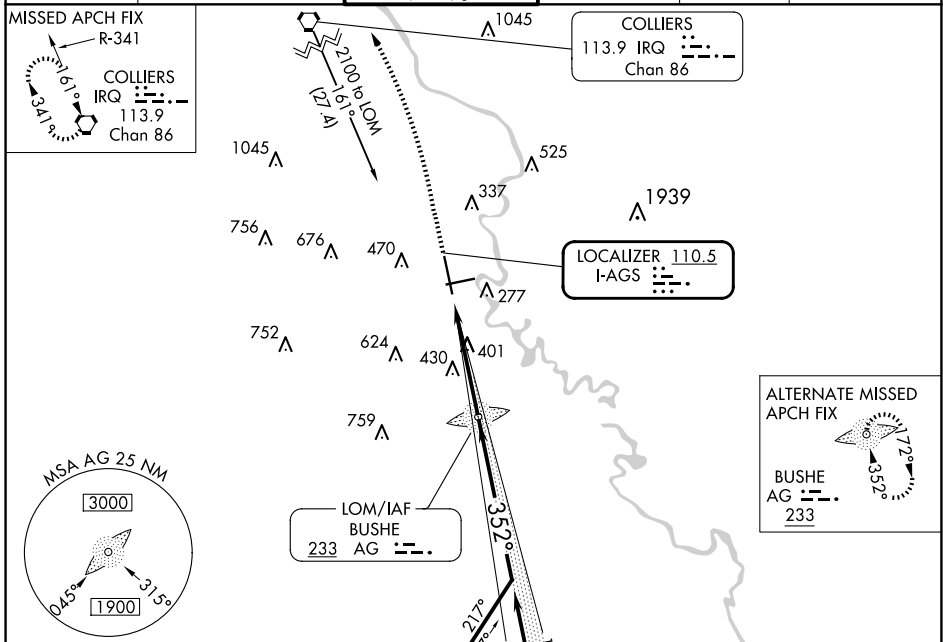
LOC I-AGS <b>110.5</b>	APP CRS <b>352°</b>	Rwy Idg TDZE Apt Elev	<b>8001</b> <b>137</b> <b>146</b>
---------------------------	------------------------	-----------------------------	---

**ILS or LOC RWY 35**  
AUGUSTA RGNL AT BUSH FLD (AGS)

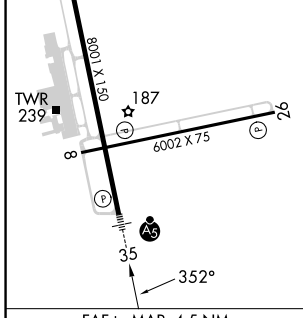
**⚠** When local altimeter setting not received, use Daniel Fld altimeter setting and increase S-ILS 35 DA to 392; increase all MDAs 60 feet and S-LOC 35 and Circling Cats C and D visibility ¼ SM. Autopilot coupled approach NA below 940.

**MALS R** MISSED APPROACH: Climb to 600 then climbing left turn to 2100 direct IRQ VORTAC and hold.

ATIS <b>132.75</b>	AUGUSTA APP CON ★ <b>126.8 270.3</b>	AUGUSTA TOWER ★ <b>118.7 (CTAF) 0 239.3</b>	GND CON <b>121.9 348.6</b>	CLNC DEL <b>118.65</b>	UNICOM <b>122.95</b>
-----------------------	---	--	-------------------------------	---------------------------	-------------------------



ELEV 146	TDZE 137
MIRL Rwy 8-26	HIRL Rwy 17-35
REIL Rwy 8 and 26	



600 2100 IRQ

AG LOM 1700 172° 352° 1700

Remain within 10 NM

1648 2000 1700

GS 3.00° TCH 56

4.5 NM

VGSI and ILS glidepath not coincident (VGSI Angle 3.00/TCH 72).

FAF to MAP 4.5 NM					
Knots	60	90	120	150	180
Min:Sec	4:30	3:00	2:15	1:48	1:30

CATEGORY	A	B	C	D
S-ILS 35	337/24 200 (200-½)			
S-LOC 35	660/24	523 (600-½)	660/55	523 (600-1)
<input checked="" type="checkbox"/> CIRCLING	780-1	634 (700-1)	780-1¾ 634 (700-1¾)	940-2½ 794 (800-2½)

SE-4, 15 MAY 2025 to 12 JUN 2025

SE-4, 15 MAY 2025 to 12 JUN 2025