

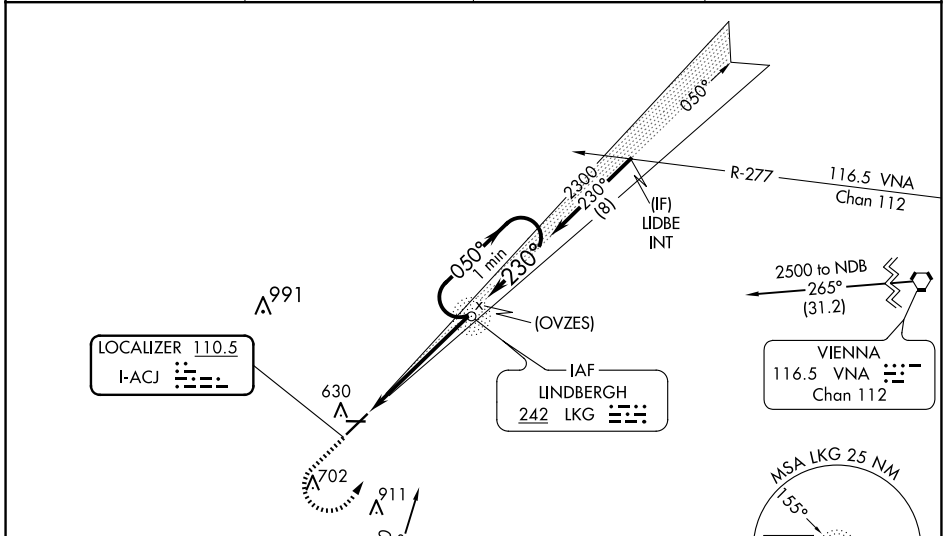
LOC I-ACJ	APP CRS	Rwy Idg	6011
110.5	230°	TDZE	464
		Apt Elev	468

ILS or LOC RWY 23

JIMMY CARTER RGNL (ACJ)

ADF required.	<p>MAVSF</p>	<p>MISSED APPROACH: Climb to 1100 then climbing left turn to 2500 direct LKG NDB and hold.</p>
<p>NA Rwy 23 helicopter visibility reduction below 3/4 SM NA. When local altimeter setting not received, use Columbus altimeter setting and increase S-ILS 23 DA to 889 and all MDA 120 feet, increase S-ILS 23 all Cats visibility and S-LOC 23 Cat C/D visibility 1/4 SM, increase Circling Cat C visibility 1/2 SM, and Circling Cat D visibility 1/4 SM. For inop ALS when using Columbus altimeter setting increase S-LOC 23 Cat C/D visibility to 1 3/4 SM. Circling Rwy 10, 28 NA at night. For inop ALS, increase S-ILS 23 all Cats visibility to 7/8 SM.</p>		

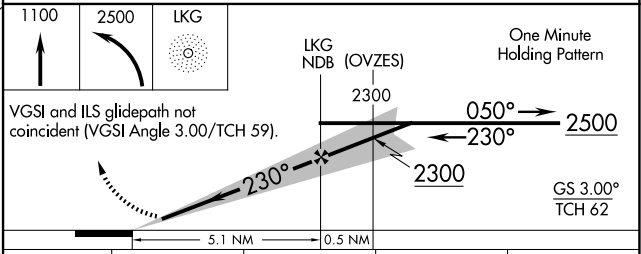
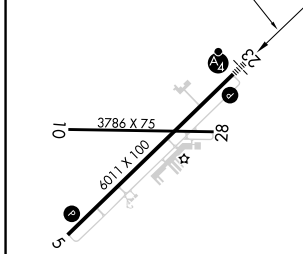
AWOS-3 128.375	ATLANTA APP CON ★ 124.2 323.1	CLNC DEL 119.95	UNICOM 122.8 (CTAF) 0
--------------------------	---	---------------------------	---------------------------------



SE-4, 15 MAY 2025 to 12 JUN 2025

SE-4, 15 MAY 2025 to 12 JUN 2025

ELEV 468	TDZE 464
----------	----------



CATEGORY	A	B	C	D
S-ILS 23	775-3/4		311 (400-3/4)	
S-LOC 23	940-3/4 476 (500-3/4)		940-1/8 476 (500-1/8)	
CIRCLING	940-1 472 (500-1)		1020-1 1/2 552 (600-1 1/2) 1280-2 3/4 812 (900-2 3/4)	

FAF to MAP 5.1 NM					
Knots	60	90	120	150	180
Min:Sec	5:06	3:24	2:33	2:02	1:42