

WAAS CH 60929 W29A	APP CRS 289°	Rwy Idg TDZE Apt Elev	6000 308 310
--	------------------------	-----------------------------	---

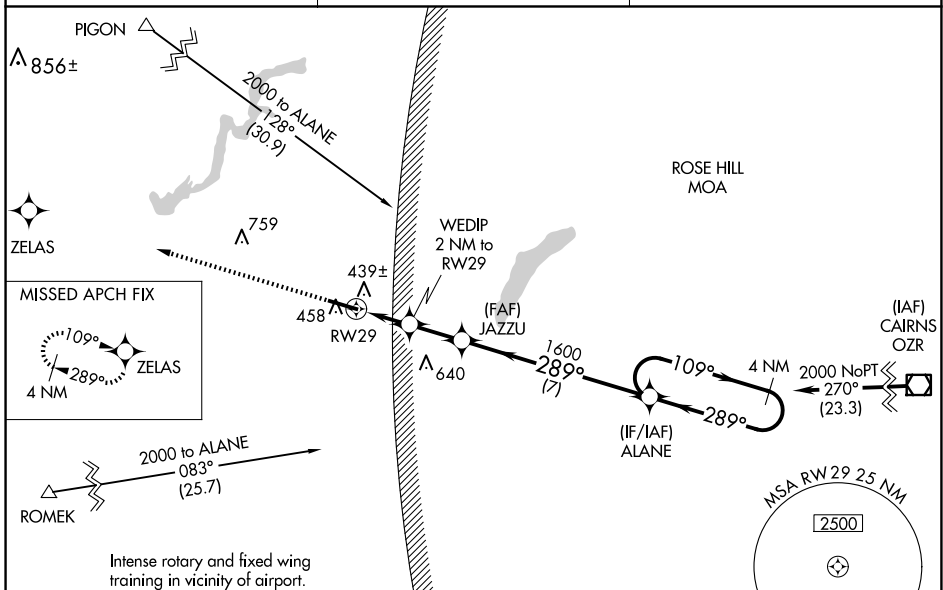
RNAV (GPS) RWY 29

SOUTH ALABAMA RGNL AT BILL BENTON FLD (79J)

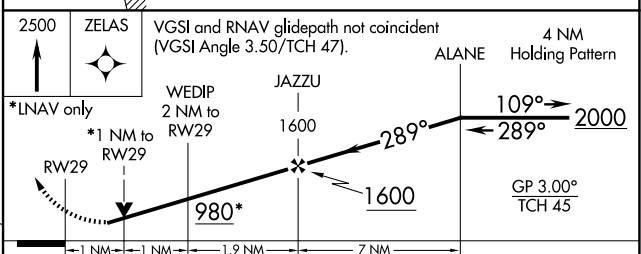
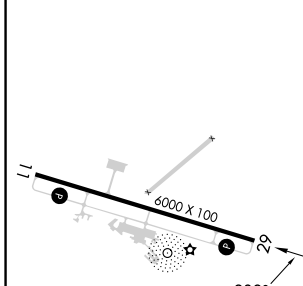
⚠ For uncompensated Baro-VNAV systems, LNAV/VNAV NA below -15°C (5°F) or above 54°C (130°F). DME/DME RNP-0.3 NA. Helicopter visibility reduction below ¾ SM NA. When local altimeter setting not received, use Cairns AAF (Fort Novosel) altimeter setting and increase all DA 82 feet, all MDA 100 feet. Increase LPV and LNAV/VNAV visibilities ¾ mile, LNAV and Circling Cat C and D ¼ mile. Baro-VNAV and VDP NA when using Cairns AAF (Fort Novosel) altimeter setting.

MISSED APPROACH: Climb to 2500 direct ZELAS and hold.

ASOS 134.875	CAIRNS APP CON ★ 133.45 239.275	UNICOM 122.8 (CTAF) 0
------------------------	---	---------------------------------



ELEV	310	TDZE	308
------	-----	------	-----



CATEGORY	A	B	C	D
LPV DA	630-1		322 (400-1)	
LNAV/VNAV DA	628-1		320 (400-1)	
LNAV MDA	720-1	412 (500-1)	720-1½	412 (500-1½)
CIRCLING	820-1	510 (600-1)	860-1½ 550 (600-1½)	940-2 630 (700-2)

MIRL Rwy 11-29 0
REIL Rwy 11 and 29

SE-4, 15 MAY 2025 to 12 JUN 2025

SE-4, 15 MAY 2025 to 12 JUN 2025